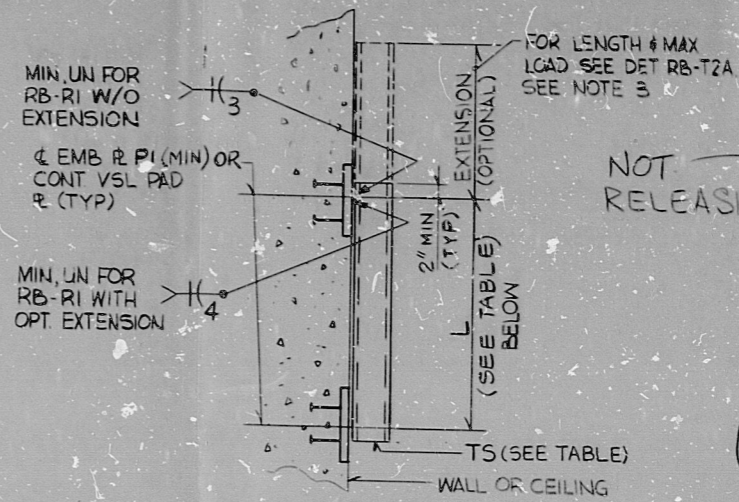


TYPE RB-R
STEEL PLATFORM OR STEEL COLUMN MOUNTED
BELOW EL 395.0 & EL 425.0 PLATFORMS

| TUBE SIZE | MAX CONDUIT LOAD IN LBS | | | | |
|--------------------------|-------------------------|--------------|----------------------|--------------|-------|
| | 2 1/2 x 2 1/2 x 3/16 | 3 x 3 x 3/16 | 3 1/2 x 3 1/2 x 3/16 | 4 x 4 x 3/16 | |
| MAX LENGTH OF MEMBER (L) | 3'-0" | 4'-0" | 5'-0" | 6'-0" | 8'-0" |
| EL 395.0 | 565 | 400 | 485 | 565 | 520 |
| EL 425.0 | 490 | 350 | 420 | 425 | 445 |



TYPE RB-RI
CONCRETE WALL OR CEILING MOUNTED
REACTOR CONTAINMENT VESSEL & INTERNAL
STRUCTURE UP TO EL 425.0 (INCLUSIVE)

| TUBE SIZE | MAX CONDUIT LOAD IN LBS (SEE NOTE 1) | | | | |
|--------------------------|--------------------------------------|--------------|----------------------|--------------|-------|
| | 2 1/2 x 2 1/2 x 3/16 | 3 x 3 x 3/16 | 3 1/2 x 3 1/2 x 3/16 | 4 x 4 x 3/16 | |
| MAX LENGTH OF MEMBER (L) | 3'-0" | 4'-0" | 5'-0" | 6'-0" | 8'-0" |
| UP TO EL 425.0 | 1830 | 775 | 710 | 655 | 350 |

NOTES:

- FOR SUPPORT TYPE RB-RI (ALT), ONLY HALF THE LOAD SHOWN IN THE ABOVE TABLE MAY BE APPLIED IN THE MIDDLE ONE THIRD OF THE SPAN LENGTH (L).
- FOR WELD/CONN DETAILS NOT SHOWN SEE TYP CONN DETAILS
- THE EXTENSION MEMBER MUST BE A CONTINUATION OF THE MEMBER USED FOR SUPPORTS RB-R AND RB-RI. SPICE CONNECTIONS TO SUPPORTS RB-R AND RB-RI ARE NOT PERMITTED. RB-T2 AND RB-T2A LOAD TABLES ARE TO BE USED FOR DETERMINING THE MAXIMUM LOAD ON THE EXTENSION FOR SUPPORT TYPES RB-R AND RB-RI RESPECTIVELY, BASED ON THE CANTILEVER LENGTH. THE MEMBER SIZE USED FOR THE EXTENSION MAY BE EQUAL TO OR GREATER THAN THAT SHOWN IN TABLES RB-T2 AND RB-T2A FOR A GIVEN CANTILEVER LENGTH, BUT AS A MINIMUM MUST BE EQUAL TO THE MEMBER REQUIRED FOR SUPPORTS TYPE RB-R AND RB-RI.

PRC
APERTURE
CARD

THIS SHEET IS FOR SEISMIC APPLICATIONS IN REACTOR BLDG. AND CONDENSATE & REFUELING WATER STORAGE TANK AREA AS INDICATED IN NOTE 3, 34-9, SH. 5B

| REV. | DATE | BY | APPROVED |
|------|------|----|----------|
| 5 | | | |
| 4 | | | |
| 3 | | | |
| 2 | | | |
| 1 | | | |

EBASCO SERVICES INCORPORATED
DIV. ELEC. DR. PS
CH. K. ENG
DATE JULY 21, 1981

NUCLEAR SAFETY RELATED

WPPSS QUALITY CLASS II B & C

WASHINGTON PUBLIC POWER
SUPPLY SYSTEM
NUCLEAR PROJECTS NO. 3 & 5
GENERAL NOTES, SYMBOLS AND
REFERENCE DRAWINGS

WPPS-3240
D-5023
SHEET 55-31

RIDS

8303240164

