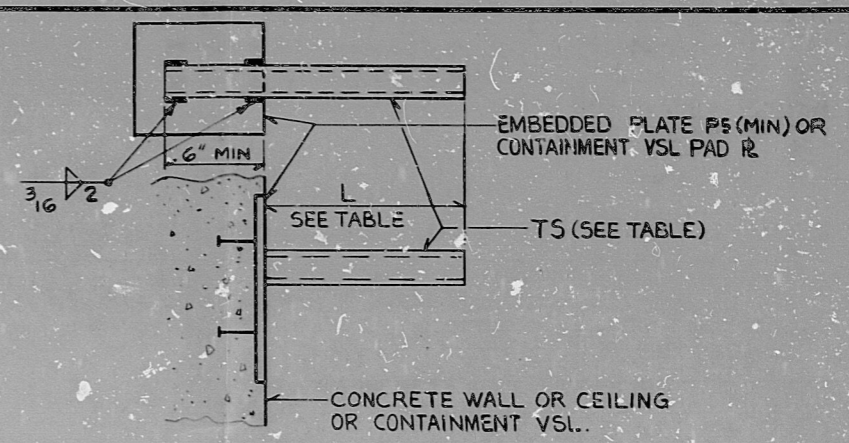


TYPE RB-T2
 STEEL PLATFORM OR STEEL COLUMN MOUNTED
 (FOR PLATFORMS @ EL.395'-0" AND BELOW & EL.425'-0" AND BELOW)

TUBE SIZE MAX. LENGTH OF MEMBER (L)	MAXIMUM CONDUIT LOAD IN LBS.									
	2 1/2 x 2 1/2 x 1/4		3 1/2 x 3 1/2 x 3/16		3 1/2 x 3 1/2 x 1/4		4 x 4 x 3/16		4 x 4 x 5/16	
	EL.395'-0"	EL.425'-0"	EL.395'-0"	EL.425'-0"	EL.395'-0"	EL.425'-0"	EL.395'-0"	EL.425'-0"	EL.395'-0"	EL.425'-0"
1'-0"	260	225	480	400						
2'-0"	120	100	225	190	280	240				
3'-0"	70	60	140	120					270	240
4'-0"							130	100		
5'-0"					80	65				
6'-0"									90	70



TYPE RB-T2A
 CONCRETE WALL OR CEILING MOUNTED,
 REACTOR CONTAINMENT VESSEL & INTERNAL
 STRUCTURE UP TO EL.425'-0" (INCLUSIVE)

TUBE SIZE MAX. LENGTH OF MEMBER (L)	MAXIMUM CONDUIT LOAD IN LBS.					
	2 1/2 x 2 1/2 x 3/16	3 x 3 x 3/16	3 1/2 x 3 1/2 x 3/16	4 x 4 x 5/16	5 x 5 x 3/16	5 x 5 x 5/16
	1'-0"	700	1080			
2'-0"	190	360	600			
3'-0"	40		160	360		
4'-0"			50	125		
5'-0"					80	
6'-0"						30

PRC
 APERTURE
 CARD

- NOTES:
- FOR USE OF U-BOLTS WITH TS SUPPORT MEMBERS SEE SH.55-35.
 - FOR WELD/CONN. DETAILS NOT SHOWN SEE TYP. CONN. DETAILS.



THIS SHEET IS FOR SEISMIC APPLICATIONS IN REACTOR BLDG. AND CONDENSATE & REFUELING WATER STORAGE TANK AREA AS INDICATED IN NOTE 3, 04-9, SH. 5B.

NUCLEAR SAFETY RELATED		WPPSS QUALITY CLASS II & G	
EBASCO SERVICES INCORPORATED		WASHINGTON PUBLIC POWER SUPPLY SYSTEM	
DIV. ELEC. DR. P5		NUCLEAR PROJECTS NO. 3 & 5	
CH. K. ENG.		GENERAL NOTES, SYMBOLS AND REFERENCE DRAWINGS	
DATE JULY 21, 1981		WPPS-3240	
APPROVED		D-5023	
REV. DATE BY		SHEET 55-29	

RIDS

8303240162

