

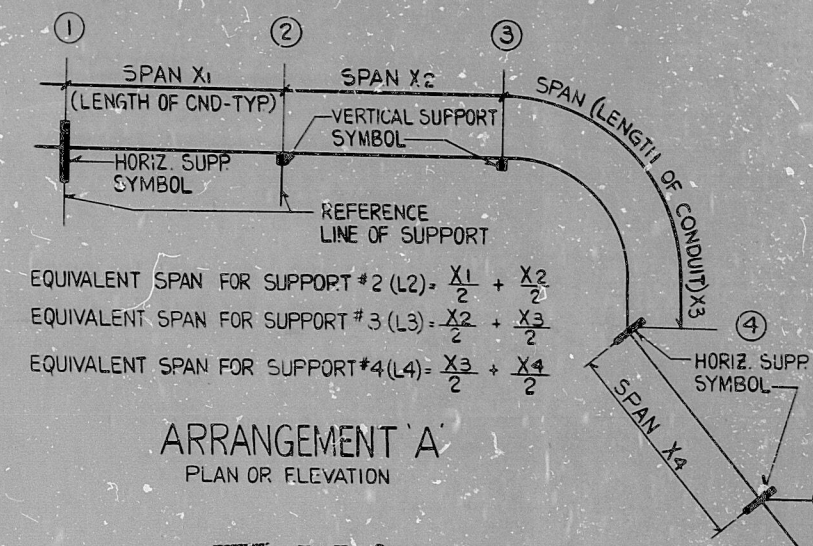
BASED ON EITHER CONDUIT ALLOWABLE STRESS, N. E. C. SPACING LIMITS, OR STRAP CAPACITIES, THE FOLLOWING MAXIMUM SUPPORT SPANS APPLY TO SEISMIC CONDUIT RUNS. EITHER B2100 SERIES OR U-BOLT MAY BE USED, PROVIDED CORRESPONDING SPANS ARE MAINTAINED. THE REACTIONS SHOWN GIVE THE CONDUIT LOADS AT SUPPORTS FOR EACH CASE. STRAPS SHOWN ARE BY B-LINE SYSTEMS, ENGINEER APPROVED EQUAL STRAPS OR CLAMPS MAY BE SUBSTITUTED.

REACTOR BUILDING PLATFORM EL 395.00'											
CONDUIT DIAMETER (IN.)	TOTAL WEIGHT + PER FOOT (lbs)	STRAP TYPE	HORIZONTAL RUN SPAN (MAX)	REACTION FORCES (lbs)	VERTICAL RUN SPAN (MAX)	REACTION FORCES (lbs)	U-BOLT TYPE	HORIZONTAL RUN SPAN (MAX)	REACTION FORCES (lbs)	VERTICAL RUN SPAN (MAX)	REACTION FORCES (lbs)
3/4	1.50	B2100-1	6'0	9.0	6'0	9.0	B501-3/4	6'0	9.0	6'0	9.0
1	2.33	B2100-2	6'9	15.5	6'9	15.5	B501-1	6'9	15.5	6'9	15.5
1 1/2	4.29	B2100-4	7'0	30.0	5'3	22.5	B501-1 1/2	7'9	33.0	7'9	33.0
2	5.32	B2100-5	8'3	43.5	7'0	37.0	B501-2	9'0	47.5	9'0	47.5
3	12.83	B2100-7	5'6	70.5	3'9	48.0	B501-3	10'3	131.5	10'3	131.5
4	16.73	B2100-9	6'0	100.0	4'3	71.0	B501-4	12'3	205.0	11'6	192.0
5	23.14	B2100-10	4'3	98.0	3'0	69.5	B501-5	16'6	243.0	9'0	208.0
6	29.45	B2100-11	3'3	95.5	2'6	73.5	B501-6	8'6	250.0	7'6	221.0

REACTOR BUILDING PLATFORM EL 425.00'											
CONDUIT DIAMETER (IN.)	TOTAL WEIGHT + PER FOOT (lbs)	STRAP TYPE	HORIZONTAL RUN SPAN (MAX)	REACTION FORCES (lbs)	VERTICAL RUN SPAN (MAX)	REACTION FORCES (lbs)	U-BOLT TYPE	HORIZONTAL RUN SPAN (MAX)	REACTION FORCES (lbs)	VERTICAL RUN SPAN (MAX)	REACTION FORCES (lbs)
3/4	1.50	B2100-1	5'6	8.0	5'6	8.0	B501-3/4	5'6	8.0	5'6	8.0
1	2.33	B2100-2	6'0	14.0	6'0	14.0	B501-1	6'0	14.0	6'0	14.0
1 1/2	4.29	B2100-4	4'0	17.0	4'6	19.0	B501-1 1/2	7'0	30.0	7'0	30.0
2	5.32	B2100-5	4'6	24.0	5'0	26.5	B501-2	8'3	43.5	8'3	43.5
3	12.83	B2100-7	3'3	41.5	4'0	51.0	B501-3	9'3	118.5	9'3	118.5
4	16.73	B2100-9	3'6	58.5	4'0	67.0	B501-4	8'6	142.0	11'0	184.0
5	23.14	B2100-10	2'6	57.5	3'0	69.0	B501-5	6'6	150.0	10'3	237.0
6	29.45	B2100-11	2'0	59.0	2'3	66.0	B501-6	5'6	162.0	8'6	250.0

REACTOR BLDG - CONTAINMENT VESSEL AND INTERNAL STRUCTURE (‡) UP TO EL 425.00' (INC)						
CONDUIT DIAMETER (IN.)	TOTAL WEIGHT + PER FOOT (lbs)	STRAP TYPE	HORIZONTAL RUN SPAN (MAX)	REACTION FORCES (lbs)	VERTICAL RUN SPAN (MAX)	REACTION FORCES (lbs)
3/4	1.50	B2100-1	4'6	6.7	4'6	6.7
1	2.33	B2100-2	5'0	11.6	5'0	11.6
1 1/2	4.29	B2100-4	6'0	25.7	6'0	25.7
2	5.32	B2100-5	6'9	35.9	6'9	35.9
3	12.83	B2100-7	8'0	102.6	8'0	102.6
4	16.73	B2100-9	9'3	154.7	9'3	154.7
5	23.14	B2100-10	10'3	237.2	10'3	237.2
6	29.45	B2100-11	11'0	324.0	9'3	272.4

THE REACTIONS GIVEN IN THE TABLE ARE BASED ON EQUAL SPAN ARRANGEMENTS. FOR UNEQUAL SPAN ARRANGEMENTS, THE REACTIONS SHALL BE CALCULATED BY MULTIPLYING CORRESPONDING TOTAL CONDUIT WEIGHT PER FOOT (I. E. CONDUIT WEIGHT PLUS CABLE WEIGHT) SHOWN IN THE TABLE TIMES THE EQUIVALENT SPAN, L AS DEFINED IN ARRANGEMENT A.



ARRANGEMENT A  
PLAN OR ELEVATION

PRC  
APERTURE  
CARD

NOTES:

- + -WEIGHT INCLUDES DEAD WEIGHT OF CONDUIT AND DESIGN WEIGHT OF CABLE
- ‡ -VERTICAL SPAN DIM. REFERS TO DISTANCE BETWEEN CONDUIT STRAPS.
- ‡ INCLUDES CONCRETE STRUCTURES SUCH AS PRIMARY, SECONDARY SHIELD WALLS, INTERMEDIATE WALLS AND FLOOR SLABS. EXCLUDES SHIELD BLDG AND PLATFORMS AT EL.395.00' AND EL.425.00'.

THIS SHEET IS FOR SEISMIC APPLICATIONS IN REACTOR BLDG AND CONDENSATE & REFUELING WATER STORAGE TANK AREA AS INDICATED IN NOTE 3.04-9, SH. 5B.

NUCLEAR SAFETY RELATED		WPPSS QUALITY CLASS II B6	
EBASCO SERVICES INCORPORATED		WASHINGTON PUBLIC POWER SUPPLY SYSTEM	
DIV. FLEC. DR. PS		NUCLEAR PROJECTS NO. 3 & 5	
CH. K. ENG		GENERAL NOTES, SYMBOLS AND REFERENCE DRAWINGS	
DATE JULY 21, 1981		WPPS-3240	
REV. DATE BY APPROVED		D-5023	
		SHEET 55-28	

INCHES  
CM



**RIDS**

8303240160

