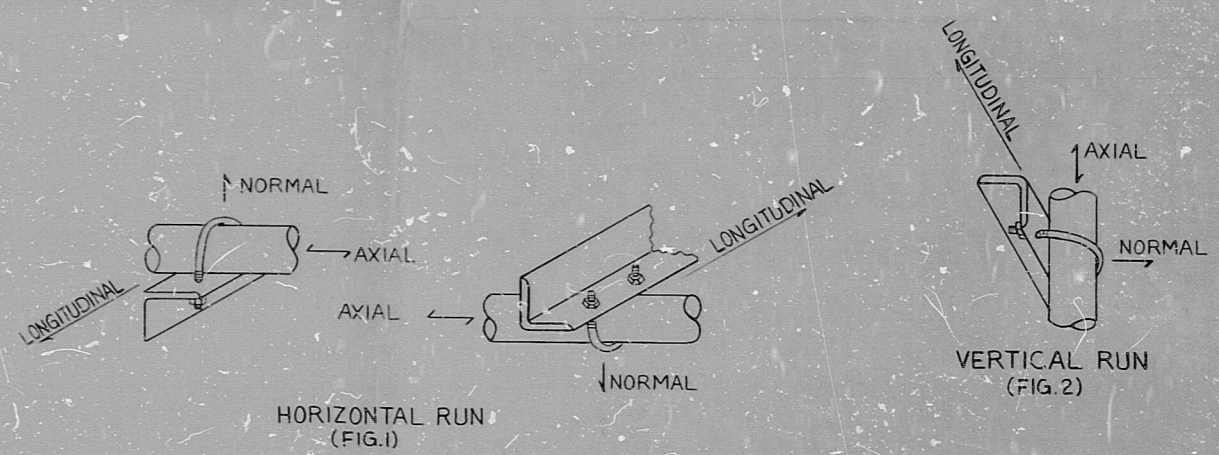


CRITERIA FOR ESTABLISHING SPACING & LOADS FOR SEISMIC
CONDUIT SUPPORTS

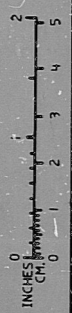
D. THE ALLOWABLE LOADS FOR U-BOLT TYPES ARE SHOWN BELOW.

MAX. LOADS FOR CONDUIT STRAPS (LBS) SAFETY FACTOR = 3
U-BOLTS IN ACCORDANCE WITH SPEC. 503 ATTACHMENT #4

| CONDUIT SIZE | U-BOLT * TYPE FIG 1 OR 2 | NORMAL (LBS) | LONGITUDINAL AND AXIAL (LBS) | BOLT ** TORQUE (FT.-LBS) |
|--------------|--------------------------|--------------|------------------------------|--------------------------|
| 1/2" | B501-1/2 | 1159 | 366 | 11 |
| 3/4" | B501-3/4 | 1291 | 628 | 11 |
| 1" | B501-1 | 1376 | 1047 | 11 |
| 1 1/4" | B501-1 1/4 | 2484 | 1360 | 11 |
| 1 1/2" | B501-1 1/2 | 2428 | 1413 | 11 |
| 2" | B501-2 | 2760 | 1539 | 19 |
| 2 1/2" | B501-2 1/2 | 2649 | 1571 | 19 |
| 3" | B501-3 | 3367 | 1696 | 19 |
| 3 1/2" | B501-3 1/2 | 3643 | 1759 | 19 |
| 4" | B501-4 | 4084 | 1885 | 19 |
| 5" | B501-5 | 4912 | 2010 | 45 |
| 6" | B501-6 | 5133 | 2157 | 45 |



PRC APERTURE CARD



NOTE: * U-BOLT HOLE TO BE 1/16 LARGER THAN U-BOLT DIAMETER.
** TORQUE TOLERANCE ± 2 ft.-lbs.
TORQUE VALUES PER NEMA & B-LINE TEST VALVE.

THIS SHEET IS FOR SEISMIC APPLICATIONS IN REACTOR BLDG. AND CONDENSATE & REFUELING WATER STORAGE TANK AREA AS INDICATED IN NOTE 3, C4-9, SH. 5B.

| REV. | DATE | BY | APPROVED |
|------|------|----|----------|
| 3 | | | |
| 4 | | | |
| 3 | | | |
| 2 | | | |
| 1 | | | |

EBASCO SERVICES INCORPORATED

DIV. ELEC. DR. PS
CH. K. ENG

DATE JULY 21, 1981

APPROVED

WASHINGTON PUBLIC POWER SUPPLY SYSTEM
NUCLEAR PROJECTS NO. 3 & 5
GENERAL NOTES, SYMBOLS AND REFERENCE DRAWINGS

WPPSS-3240
D-5023
SHEET 55-27

NUCLEAR SAFETY RELATED WPPSS QUALITY CLASS II B G

RIDS

8303240159

