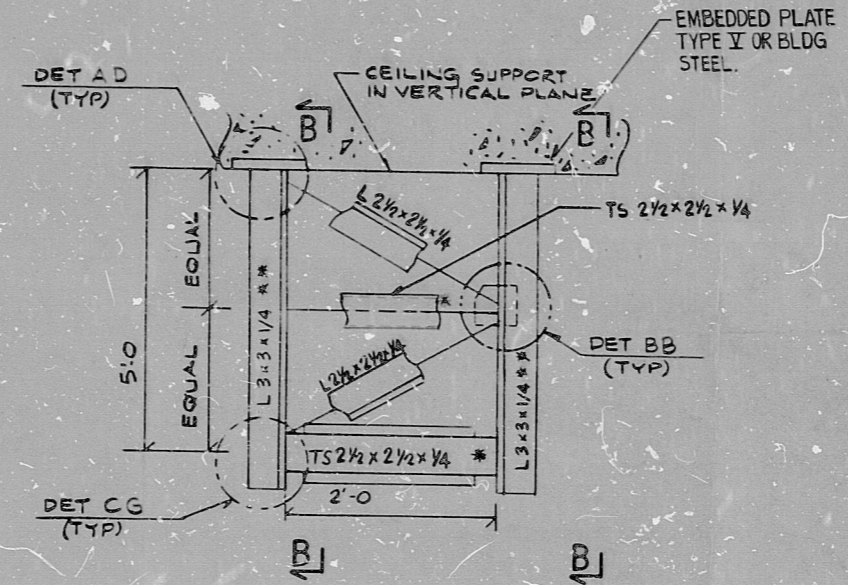
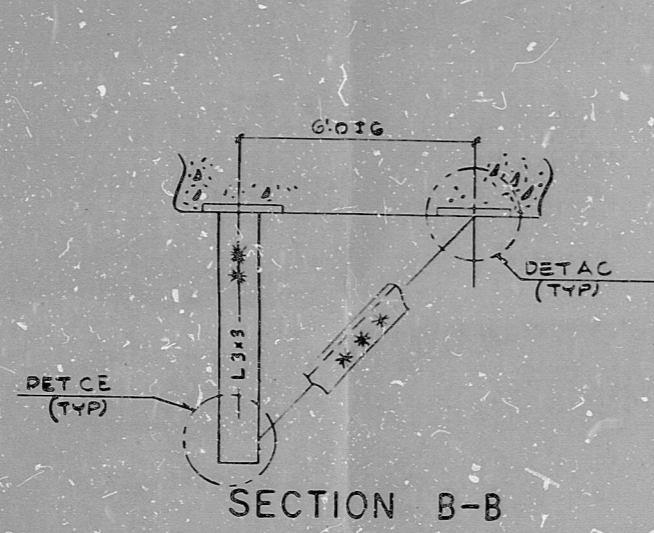


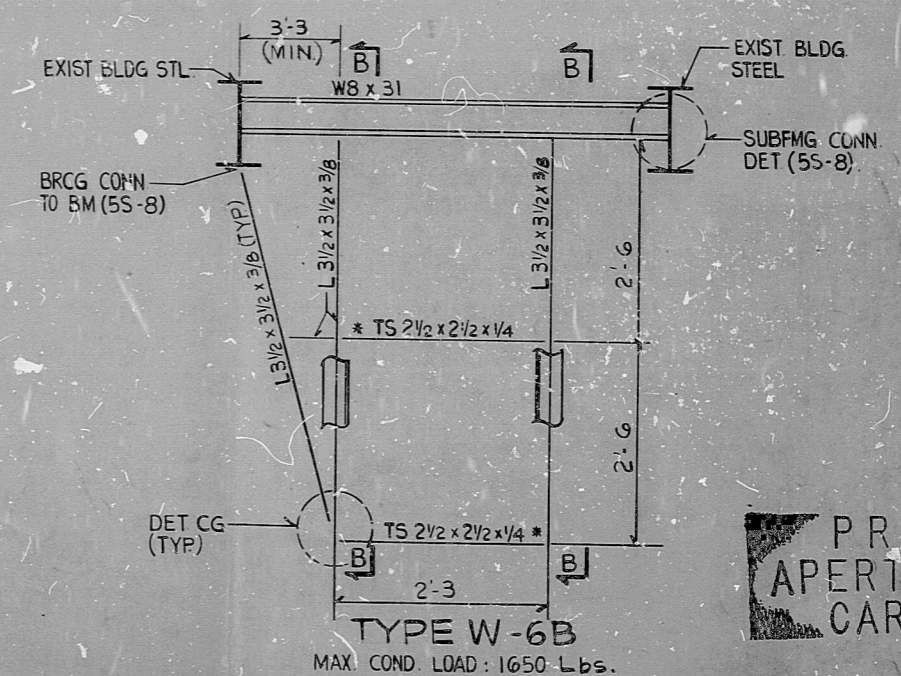
NOTE TO 1850 0-77 4140500



TYPE W-6A
MAX. CONDUIT LOAD: 1650 Lbs.

NOTES

- ** STRUTS MAY BE WELDED ON VERTICAL L3x3 HANGERS TO SUPPORT CONDUIT AS REQD
- * FA-1 OR FA-2 AS REQUIRED
- FOR GENERAL DETAILS, SEE SHEET 55-4 THRU 55-8
- ** L2 1/2 x 2 1/2 x 1/4 FOR W-6A
- L3 1/2 x 3 1/2 x 3/8 FOR W-6B
- ALL DIMENSIONS ± 3 U.N.



TYPE W-6B
MAX. COND. LOAD: 1650 Lbs.



THIS SHEET IS FOR SEISMIC APPLICATIONS IN RAB AND FHB ONLY.

EBASCO SERVICES INCORPORATED			
DIV. ELEC. DR. FDB		APPROVED	
CH. F.D. BEANE		<i>[Signature]</i>	
REV.	DATE	BY	APPROVED
1	8-22-80	SP	<i>[Signature]</i>
2	2-17-81	SP	<i>[Signature]</i>
3			
4			
5			

NUCLEAR SAFETY RELATED WPPSS QUALITY CLASS I, II & G

WASHINGTON PUBLIC POWER SUPPLY SYSTEM
NUCLEAR PROJECTS NO. 3 & 5
GENERAL NOTES, SYMBOLS AND REFERENCE DRAWINGS

WPPSS-3240
D-5025
SHEET 55-22

RIDS

8303240154

