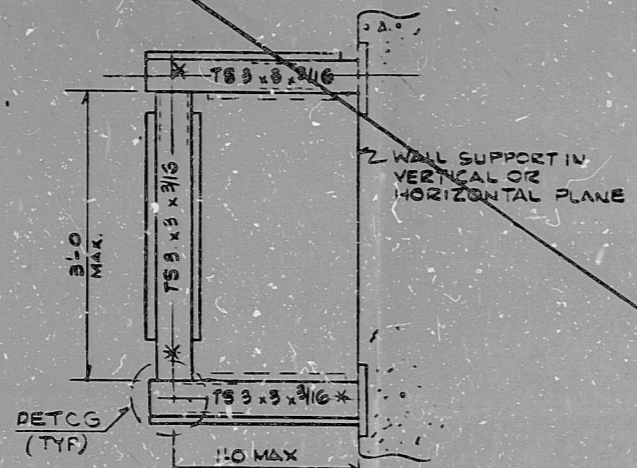
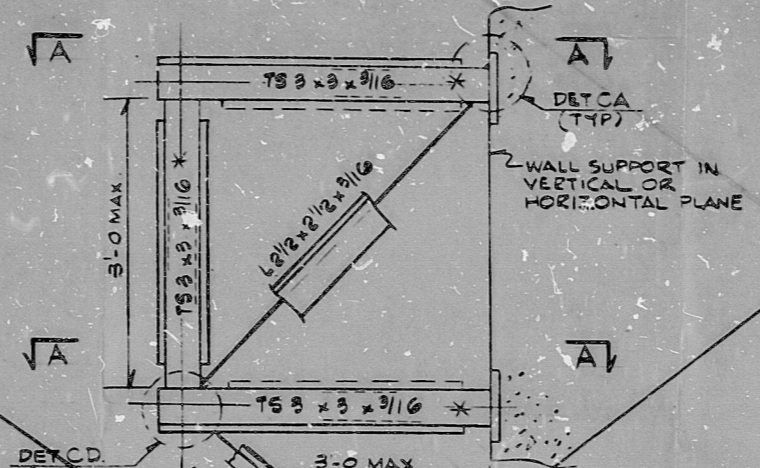


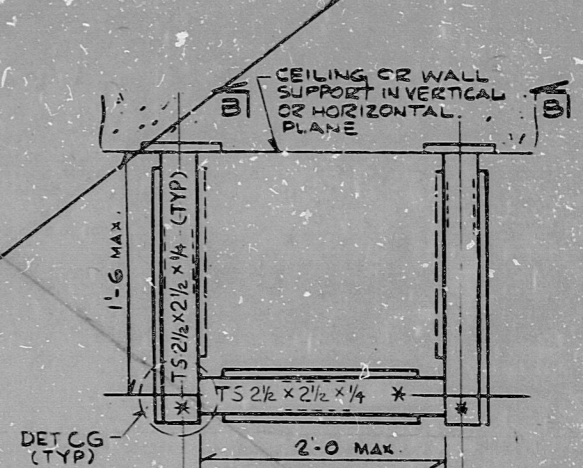
K&E 13 1001 6-77 (11/85)



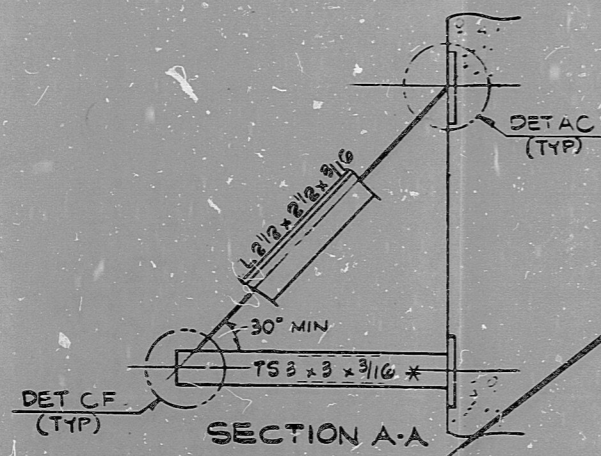
**TYPE Z1**  
 MAX. COND. LOAD = 1500 LBS (+200)  
 (NO LONG BRCG. REOD.)



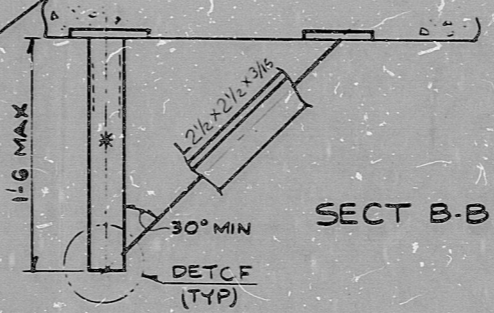
**TYPE X4**  
 MAX. COND. LOAD = 2100 LBS (+300)



**TYPE W4**  
 MAX. COND. LOAD = 1500 LBS (+300)



**SECTION A-A**



**SECTION B-B**

**NOTES**  
 FOR DETAILS, SEE SHEET 55-4 THRU 55-8  
 \* FA-1 OR FA-2 AS REQUIRED

**PRC APERTURE CARD**

NOTE FOR REV. 1: THIS SHEET VOID **NUCLEAR SAFETY RELATED** **WPPSS QUALITY CLASS I, II & III**

5			
4			
3			
2			
1	8-22-80	SP	1/16
REV.	DATE	BY	APPROVED

**EBASCO SERVICES INCORPORATED**  
 DIV. ELEC. DR. FDB  
 CH. F. D. BEANE  
 DATE APR 10 1979

**WASHINGTON PUBLIC POWER SUPPLY SYSTEM**  
 NUCLEAR PROJECTS NO. 3 & 5  
 GENERAL NOTES, SYMBOLS AND REFERENCE DRAWINGS

**WPPS-3240**  
**D-5023**  
 SHEET 55-21

**RIDS**

8393240152

