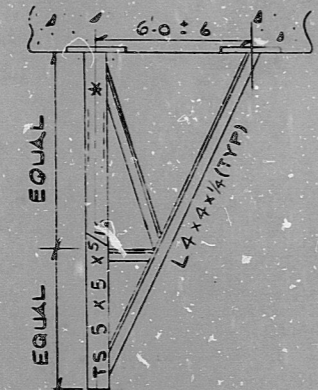
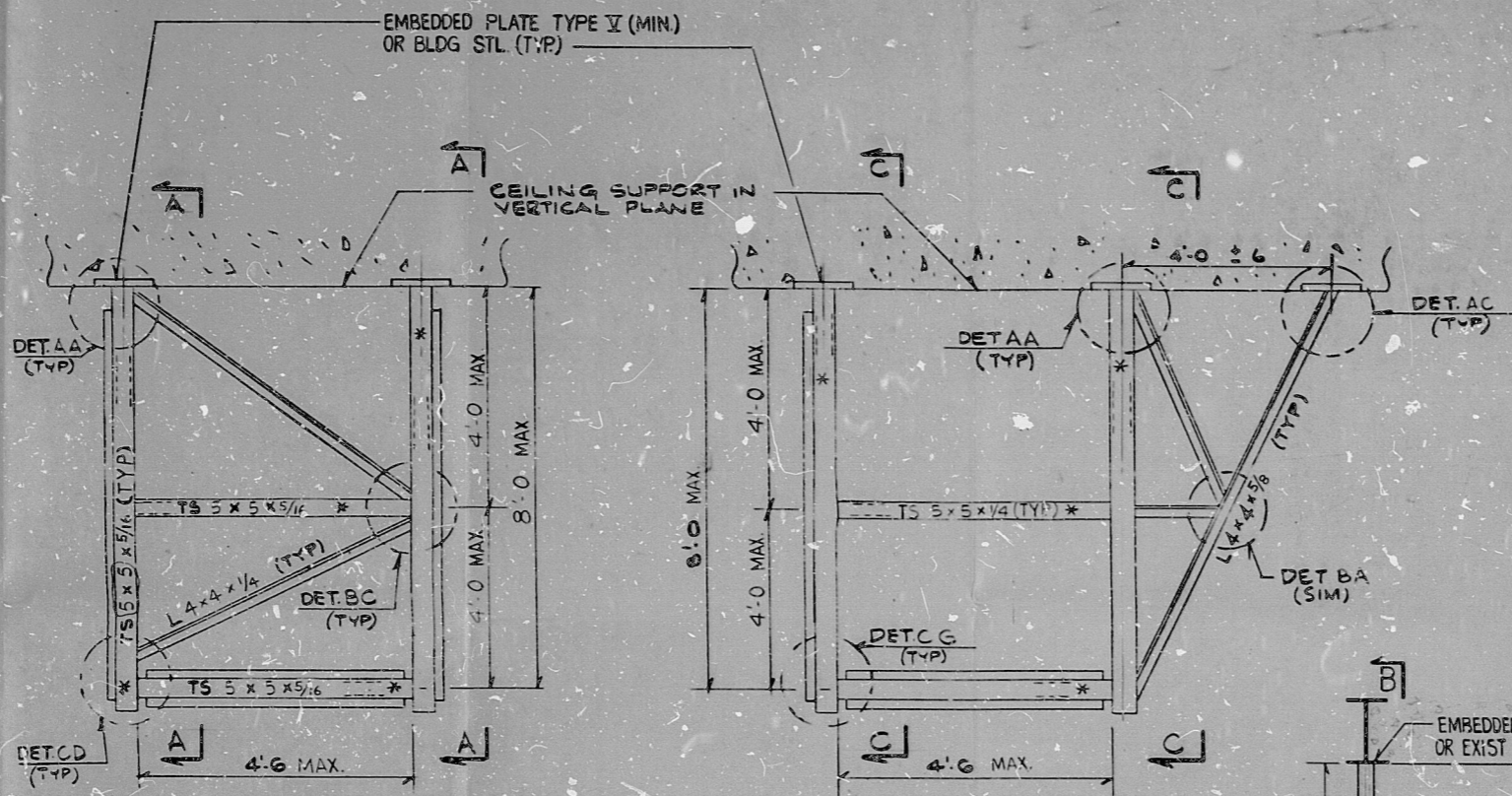
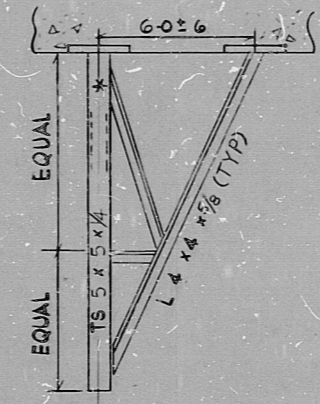


REVISION 10 1478 0-72 414480

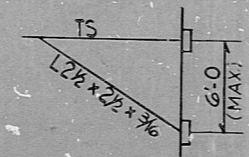


SECTION A-A

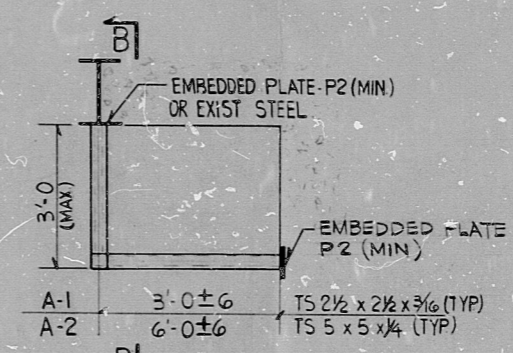
TYPE Y1 & TYPE Y2 - TOTAL CONDUIT LOAD = 3500 LBS



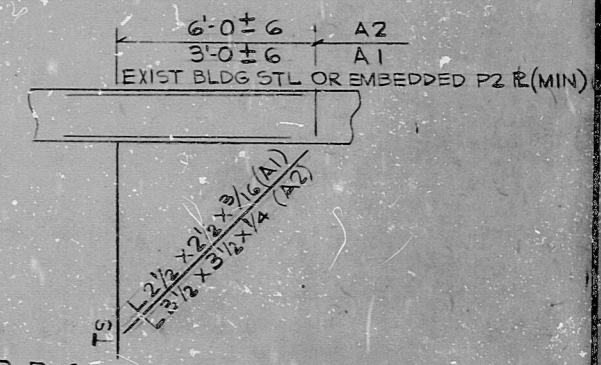
SECTION C-C



SECTION D-D



TYPE A1 & A2 FOR MAXIMUM CONDUIT LOAD SEE TABLE BELOW



SECTION B-B (OPTIONAL) (SEE TABLE BELOW)

PRC APERTURE CARD

- NOTE:
- FOR DETAILS SEE SHEET 55-4 THRU 55-8
  - ALL DIMENSIONS ± 3" UNLESS NOTED
  - \* FA-1 OR FA-2 AS REQUIRED

SUPPORT TYPE	MAXIMUM CONDUIT LOAD	
	WITH BRACING	WITHOUT BRACING
A-1	600	280
A-2	600	300
A-3	970	—

THIS SHEET IS FOR SEISMIC APPLICATIONS IN RAB AND FHB ONLY.

NUCLEAR SAFETY RELATED		WPPSS QUALITY CLASS I, II & G	
EBASCO SERVICES INCORPORATED DIV. ELEC. DR. FDB CH. F. D. BEANE DATE APR 10 1979		WASHINGTON PUBLIC POWER SUPPLY SYSTEM NUCLEAR PROJECTS NO. 3 & 5 GENERAL NOTES, SYMBOLS AND REFERENCE DRAWINGS	
1 8-22-80 SP [Signature] [Initials] 2 2-17-81 SP [Signature] [Initials]		WPPS-3240 D-5023 SHEET 55-19	



**RLOs**

8303240150

