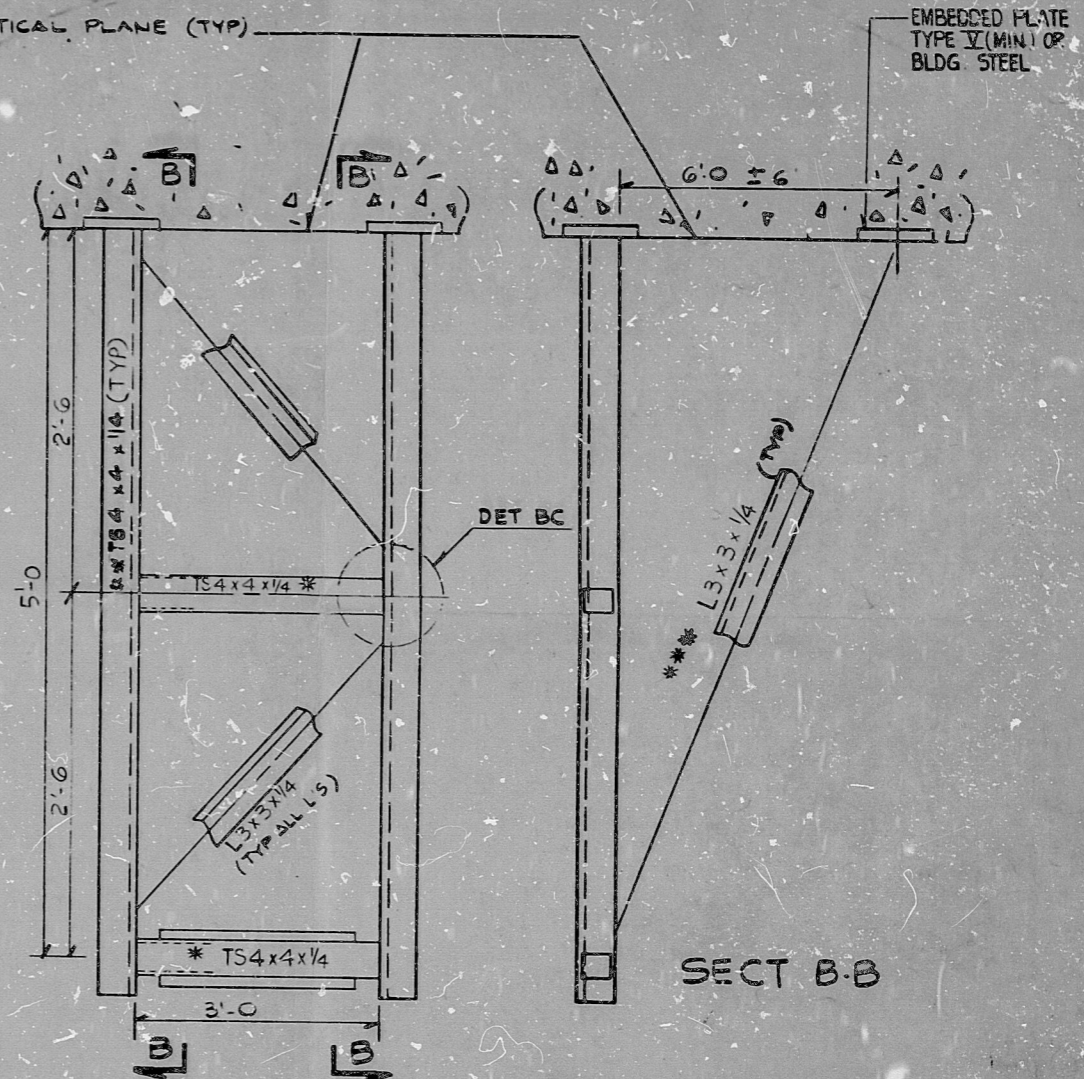


11010 1000 0-77 410000

CEILING SUPPORTS IN VERTICAL PLANE (TYP)



TYPE X-3
MAX. COND LOAD = 2400 #

PRC APERTURE CARD

- * FA1 OR FA2 AS REQUIRED
 - ** STRUTS MAY BE WELDED ON VERT L3x3 HANGERS TO SUPPORT CONDUITS AS REQ'D
 - *** LONGITUDINAL BRACE EVERY OTHER SUPPORT (TYP) FOR DETAILS, SEE SH 55-4 THRU 55-8
- ALL DIMENSIONS ± 3" U.N.

THIS SHEET IS FOR SEISMIC APPLICATIONS IN RAB AND FHB ONLY.

5			
4			
3			
2	2-17-81	SP	[Signature]
1	8-22-80	SP	[Signature]
REV.	DATE	BY	APPROVED

EBASCO SERVICES INCORPORATED
 DIV. ELEC. DR. FDB
 CH. F. D. BEANE
 DATE APR 10, 1979

APPROVED
 [Signature]
 C. Dominguez

WASHINGTON PUBLIC POWER SUPPLY SYSTEM
 NUCLEAR PROJECTS NO. 3 & 5
 GENERAL NOTES, SYMBOLS AND REFERENCE DRAWINGS

WPPS-3240
 D-5023
 SHEET 25-16

RIDS

83 032 40 (7)

