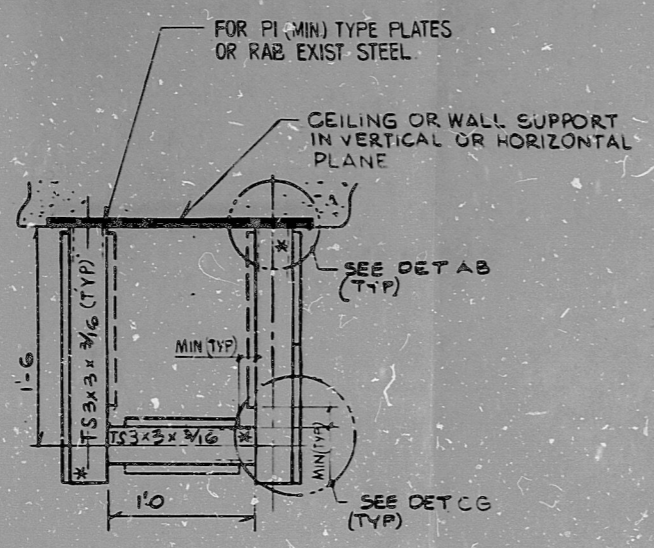
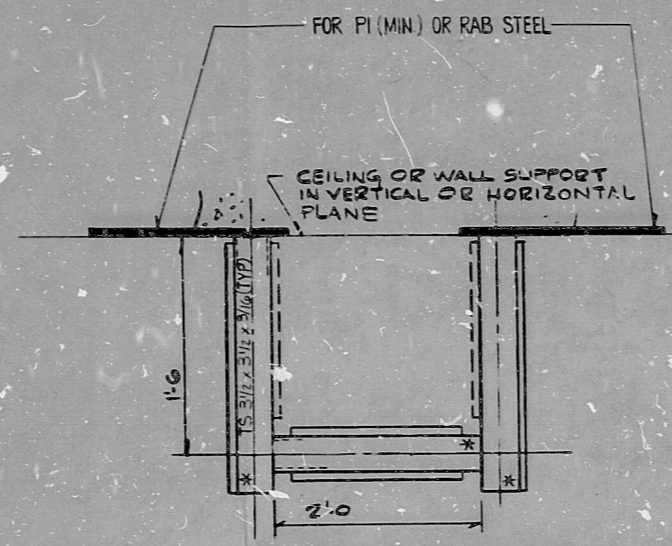


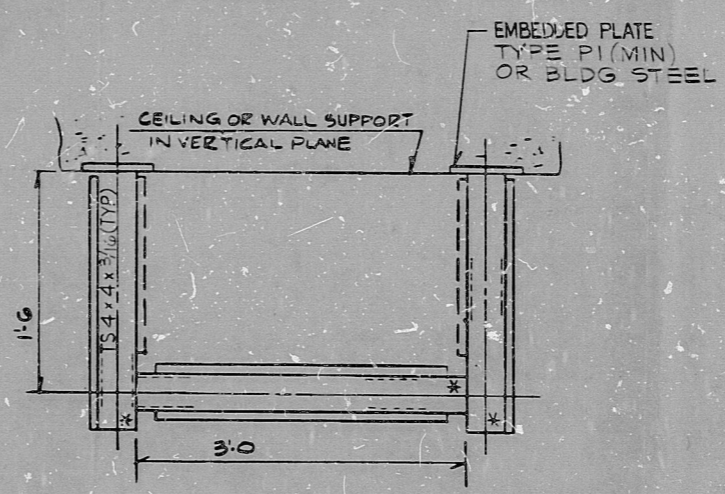
PLATE 10 1880 4-77 614-222



TYPE VI
MAX. COND. LOAD = 1300 LBS



TYPE W1
MAX. COND. LOAD = 1800 LBS



TYPE X1
MAX. CONDUIT LOAD = 2100 LBS

NOTES
1. ALL DIMENSIONS ± 3" U.N.
* FA-1 OR FA-2 AS REQUIRED

PRC APERTURE CARD

THIS SHEET IS FOR SEISMIC APPLICATIONS IN RAB AND FHB ONLY

DCN-ED-94
INCORPORATED IN REV. 3

NUCLEAR SAFETY RELATED

WPPSS QUALITY CLASS 1, I, B6

EBASCO SERVICES INCORPORATED			
5			
4			
3	5-7-82	SP	REVISION
2	2-17-81	SP	REVISION
1	8-22-80	SP	REVISION
REV.	DATE	BY	APPROVED
	DATE APR 10, 1979		

WASHINGTON PUBLIC POWER
SUPPLY SYSTEM
NUCLEAR PROJECTS NO. 3 & 5
GENERAL NOTES, SYMBOLS AND
REFERENCE DRAWINGS

WPPS-3240
D-5023
SHEET 55-17

74

RDS

8303210313

