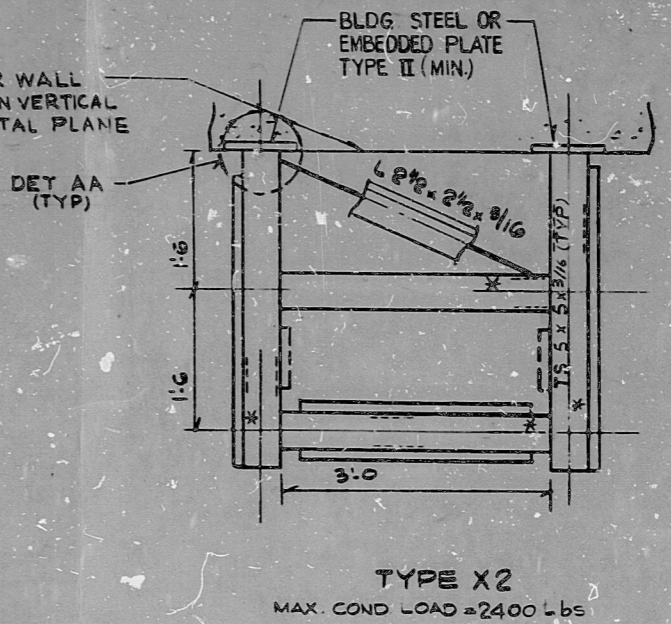
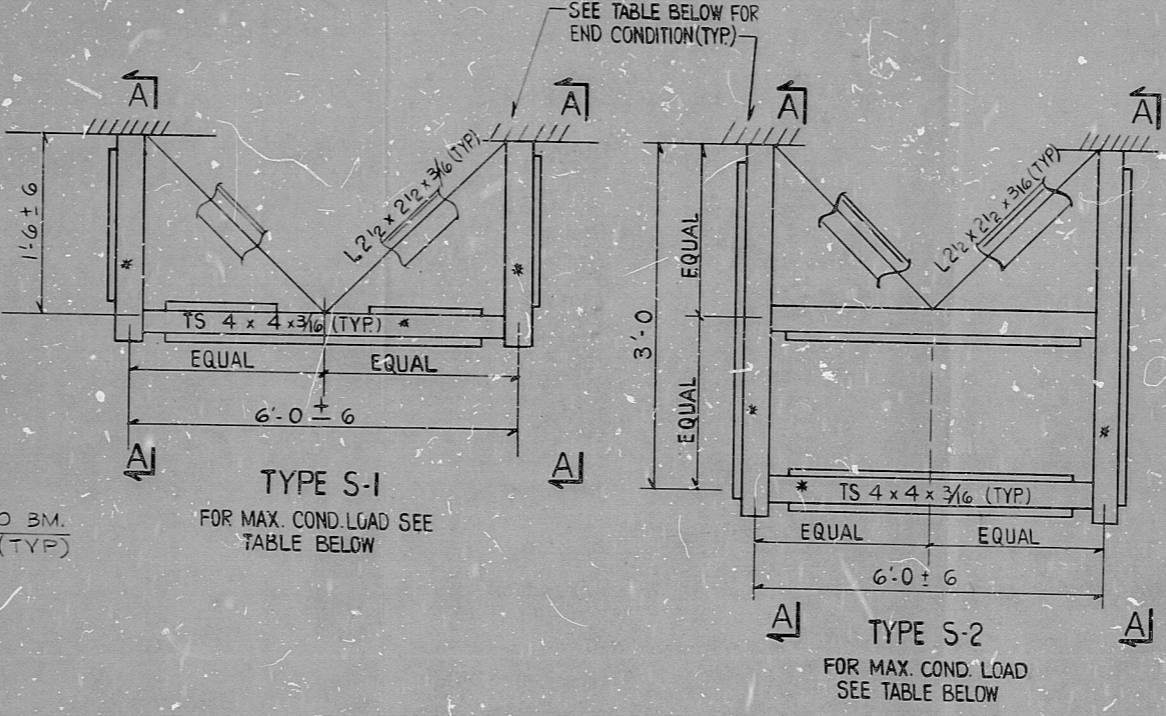


TYPE V2  
MAX. COND. LOAD = 1300 lbs

TYPE W2  
MAX. COND. LOAD = 2100 lbs

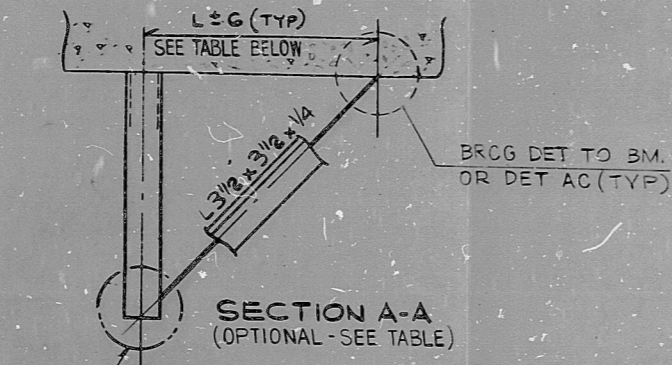


TYPE X2  
MAX. COND. LOAD = 2400 lbs



TYPE S-1  
FOR MAX. COND. LOAD SEE TABLE BELOW

TYPE S-2  
FOR MAX. COND. LOAD SEE TABLE BELOW



NOTE:  
ALL DIMENSIONS ± 3" U.N  
\* FA-1 OR FA-2 AS REQUIRED

| PLATE               | CAPACITY | SEQUENCE                                 |
|---------------------|----------|--|
| INCREASING CAPACITY | P2       | TYPE II<br>TYPE III<br>TYPE IV<br>TYPE V |
|                     | P1       |  |
|                     | P4       |  |
|                     | P5       |  |
|                     |          |  |

| SUPPORT TYPE | SUPPORT END CONDITION | SUPPORT END CONDITION        |                              |                              |                              |
|--------------|-----------------------|------------------------------|------------------------------|------------------------------|------------------------------|
|              |                       | EMB. P2 (MIN.)               | STRUCT. BLDG. STL.           | EMB. P2 (MIN.)               | STRUCT. BLDG. STL.           |
|              |                       | DISTANCE "L" MAX. LOAD (lbs) | DISTANCE "L" MAX. LOAD (lbs) | DISTANCE "L" MAX. LOAD (lbs) | DISTANCE "L" MAX. LOAD (lbs) |
| S-1          | WITH BRGG             | 6'-0"                        | 600                          | 1'-6"                        | 1600                         |
|              | WITHOUT BRGG          | —                            | 480                          | —                            | 1320                         |
| S-2          | WITH BRGG             | 6'-0"                        | 540                          | 3'-0"                        | 1360                         |
|              | WITHOUT BRGG          | —                            | 250                          | —                            | 540                          |

THIS SHEET IS FOR SEISMIC APPLICATIONS IN RAB AND FHB ONLY.

PRC APERTURE CARD

|                              |  |   |  |
|------------------------------|--|---|--|
| NUCLEAR SAFETY RELATED       |  | WPPSS QUALITY CLASS I, II & 3                 |  |
| EBASCO SERVICES INCORPORATED |  | WASHINGTON PUBLIC POWER SUPPLY SYSTEM         |  |
| DIV. ELEC. DR. FDB           |  | NUCLEAR PROJECTS NO. 3 & 5                    |  |
| CH. F. D. BEANE              |  | GENERAL NOTES, SYMBOLS AND REFERENCE DRAWINGS |  |
| DATE APR 10, 1979            |  | WPPSS-3240                                    |  |
| APPROVED                     |  | D-5023  |  |
| DATE                         |  | SHEET 58-16                                   |  |

RDS

8303210311

