

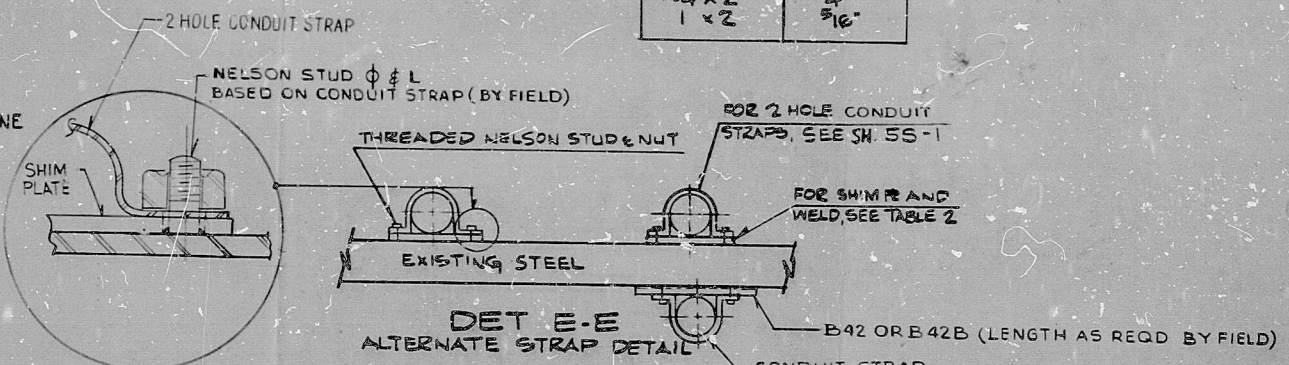
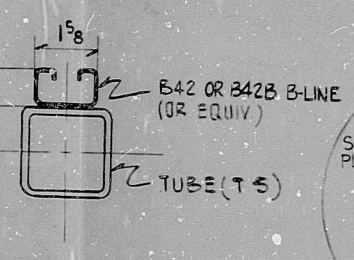
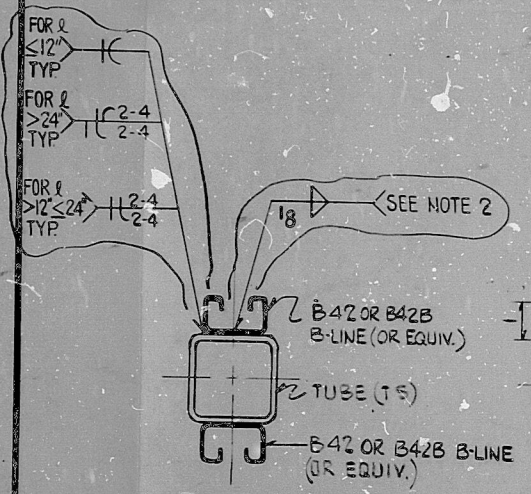
DETAIL R
(FOR ALLOWABLE LOADS, SPANS, AND TUBE SIZE SEE TABLE 1)

TABLE 1

| SPAN | 3'-0 | 4'-0 | 5'-0 | 6'-0 | 8'-0 |
|------------|----------------------|----------------------|--------------|----------------------|----------------------|
| TOTAL LOAD | 1440 | 785 | 740 | 700 | 300 |
| TUBE SIZE | 2 1/2 x 2 1/2 x 3/16 | 2 1/2 x 2 1/2 x 3/16 | 3 x 3 x 3/16 | 3 1/2 x 3 1/2 x 3/16 | 3 1/2 x 3 1/2 x 3/16 |

TABLE 2

| SHIM PLATES AS REQ'D | WELD SIZE FOR SHIMS |
|----------------------|---------------------|
| 6 x 2 | 1/8" |
| 4 x 2 | 1/8" |
| 12 x 2 | 1/4" |
| 24 x 2 | 1/4" |
| 1 x 2 | 3/16" |



NOTE: FOR THE CONDUIT ATTACHMENT TO STEEL MEMBERS OTHER THAN BLDG STEEL OR A SPECIFICALLY DESIGNED SUPPORT CONFIGURATION, AS SHOWN IN THIS DRAWING, THE ESSE CIVIL ENGINEER SHALL BE CONSULTED WITH RESPECT TO THE REQUIRED STIFFNESS OF THE STEEL MEMBER

NOTE: FOR GENERAL NOTES SEE SHEETS 55-1 & 55-2

- NOTES:
- ALL TUBE SIZES ARE AS SHOWN ON THE OTHER SUPPORT DETAILS. ADDITIONAL STRUTS MAY BE WELDED ON OTHER FACES AS REQ'D.
 - IN CASES WHERE OTHER SUPPORT MEMBERS OR FIELD CONDITIONS MAKE ADHERANCE TO THE WELD PATTERN NONCONSTRUCTABLE, SPACING MAY BE INTERRUPTED UP TO 5 INCHES ON MEMBERS GREATER THAN OR EQUAL TO 12 INCHES IN LENGTH. FOR MEMBERS LESS THAN 12 INCHES IN LENGTH THE ABOVE ALSO APPLIES WITH THE ADDED REQUIREMENT THAT THE ENDS OF THE B-42 (OR EQUAL) MUST BE WELDED.
 - THE FOLLOWING B-LINE STRUT OR APPROVED EQUIVALENT MAYBE USED, AS REQUIRED, IN LIEU OF: B-42 OR B-42B
B-32, B-32B
B-22, B-22B
B-52
THE WEIGHT OF THE STRUT IS NOT TO EXCEED THE WEIGHT OF THE SUPPORT STEEL.

PRC APERTURE CARD

THIS SHEET IS FOR SEISMIC APPLICATIONS IN RAB AND FHB ONLY.

DCN-ED-94
PCP35Q-3982,1746,4410
INCORPORATED IN REV. 3

| REV. | DATE | BY | APPROVED |
|------|---------|----|-------------|
| 3 | | | |
| 2 | 5-7-82 | SP | [Signature] |
| 1 | 2-17-81 | AS | [Signature] |
| 1 | 8-22-80 | SP | [Signature] |

| | | | |
|-------------------------------|--|---|--|
| NUCLEAR SAFETY RELATED | | WPPSS QUALITY CLASS I, II & C | |
| EBCASCO SERVICES INCORPORATED | | WASHINGTON PUBLIC POWER SUPPLY SYSTEM | |
| DIV. ELEC. DR. FDB | | NUCLEAR PROJECTS NO. 3 & 5 | |
| CH. F.D. BEANE | | GENERAL NOTES, SYMBOLS AND REFERENCE DRAWINGS | |
| DATE APR 10, 1979 | | WPPS-3240 | |
| [Signature] | | D-8025 | |
| [Signature] | | SHEET 55-13 | |

RDS

8303210309

