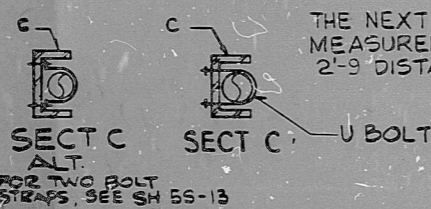
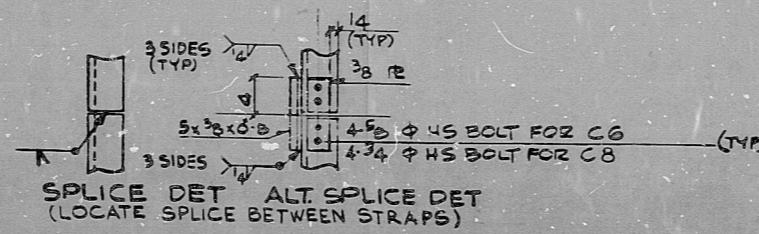


DETAIL U1 SECT A

THE NEXT CEILING OR FLOOR SUPPORT MEASURED HORIZONTALLY MUST BE AT 2'-9" DISTANCE FROM THE VERT. SUPPORT U1.



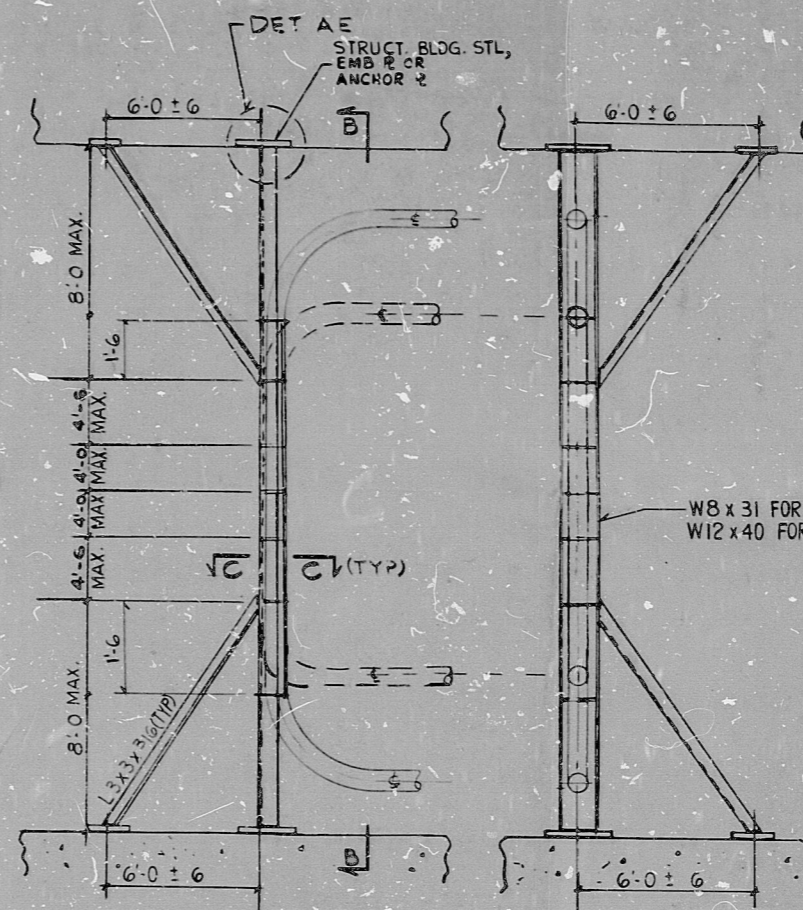
SECT C ALT. FOR TWO BOLT STRAPS, SEE SH 55-13



SPLICE DET ALT SPLICE DET (LOCATE SPLICE BETWEEN STRAPS)

CONDUIT ϕ (")	"Q" MAX. SPAN LENGTH
3/4	4'-6"
1	5'-0"
1 1/2	6'-0"
2	6'-9"
3	8'-0"
4	9'-3"
5	12'-0"
6	11'-4"

THIS SHEET IS FOR SEISMIC APPLICATIONS IN RAB AND FHB ONLY.



DETAIL U2 SECT B

THE NEXT CEILING OR FLOOR SUPPORT MEASURED HORIZONTALLY MUST BE AT 2'-9" DISTANCE FROM THE VERTICAL SUPPORT U2.

NOTE: FOR DETS NOT SHOWN SEE DET U1

- NOTES**
FOR DETAILS SEE SH. 55-4 THRU 55-8
- * THIS STRUCTURAL ANGLE IS REQUIRED WHEN VERTICAL SUPPORT LEG DIMENSION IS GREATER THAN 6'-6".
 - ** DETAILS U1 & U2 MAY BE USED TO SUP. MULTIPLE CONDUITS PROVIDED THE SUM TOTAL OF THEIR WEIGHT DOES NOT EXCEED THE WEIGHT OF ONE 6" ϕ CONDUIT
 - *** DETAIL U2 MAY BE USED TO SUP. MULTIPLE CONDUITS PROVIDED THE SUM TOTAL OF THEIR WEIGHT DOES NOT EXCEED THE WEIGHT OF ONE 3" ϕ CONDUIT.

PRC APERTURE CARD

DCN-ED-106 INCORPORATED IN REV. 3

REV	DATE	BY	APPROVED
3	5-7-82	SP	[Signature]
2	2-17-81	SP	[Signature]
1	8-22-80	SP	[Signature]

EBASCO SERVICES INCORPORATED
DIV. ELEC. DR. FDB
CH. F. D. BEANE
DATE APR 10, 1979
APPROVED [Signature]

NUCLEAR SAFETY RELATED

WPPSS QUALITY CLASS I, II & G

WASHINGTON PUBLIC POWER SUPPLY SYSTEM
NUCLEAR PROJECTS NO. 3 & 5
GENERAL NOTES, SYMBOLS AND REFERENCE DRAWINGS

WPPS-8240
D-5023
SHEET 55-11

RIDS

8303210306

