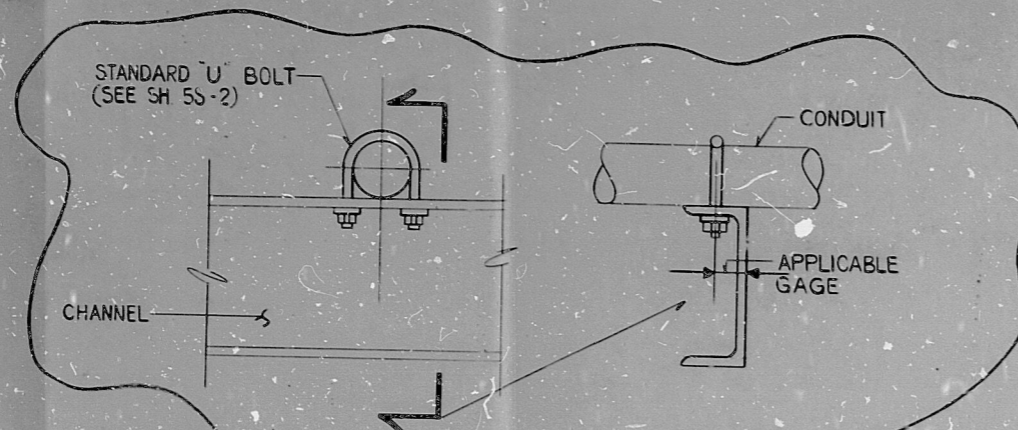
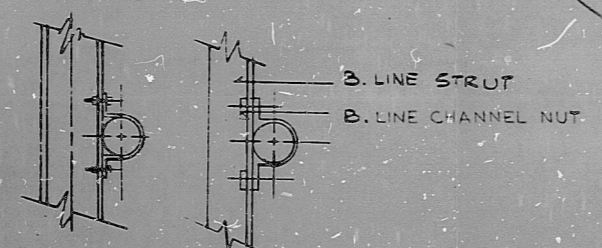


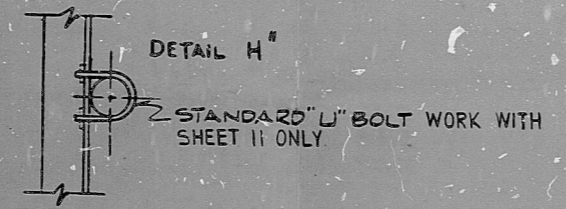
REV. 10 1979 6-79 (1/1)



**DETAIL H-5**  
 ATTACHING CONDUIT TO THE  
 SIDE OF A CHANNEL  
 (TYPICAL FOR ALL POSITION)



**DETAIL H** **DETAIL H'**  
 CONDUIT STRAP B-LINE SYSTEMS B2100 SERIES  
 FOR LOAD CAPABILITY SEE SHEET 55-1 & 55-3



THIS SHEET IS FOR SEISMIC APPLICATIONS IN RAB AND FHB ONLY.

PCP-350-2046.DC.NED.94  
 INCORPORATED IN REV. 4

**NUCLEAR SAFETY RELATED**

**WPPSS QUALITY CLASS I, II & C**

REV.	DATE	BY	APPROVED
5			
4	5-7-82	SP	[Signature]
3	7-21-81	QM	[Signature]
2	7-17-81	RL	[Signature]
1	8-22-80	SP	[Signature]

**EBASCO SERVICES INCORPORATED**  
 DIV. ELEC. DR. FDB  
 CH. F.D. BEANE  
 DATE APR 10, 1979

**WASHINGTON PUBLIC POWER  
 SUPPLY SYSTEM**  
 NUCLEAR PROJECTS NO. 3 & 5  
 GENERAL NOTES, SYMBOLS AND  
 REFERENCE DRAWINGS

**WPPS-3240**  
**D-5023**  
 SHEET 55-9

PRC  
 APERTURE  
 CARD

14  
 11  
 9.8  
 11  
 11

14  
 11  
 9.8  
 8.5  
 11  
 17



RIDS

8303210304

