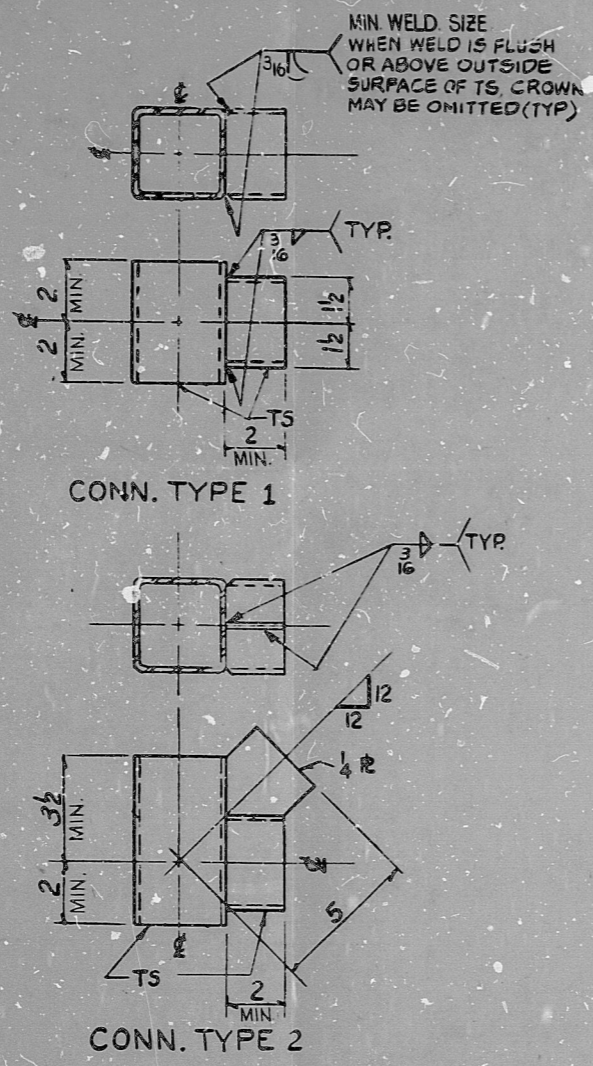
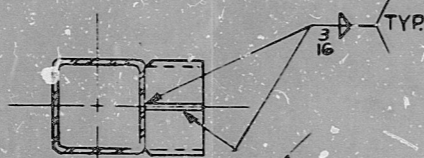


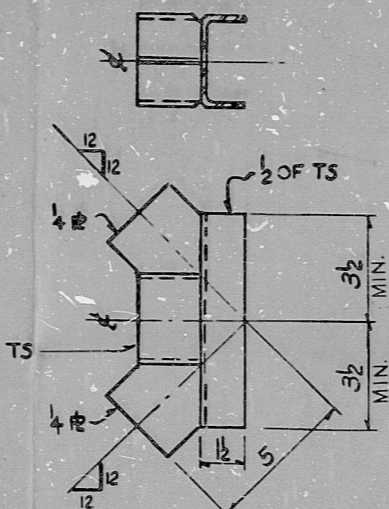
SCALE 1/8" = 1'-0"



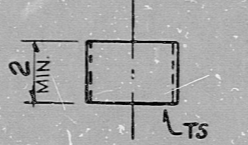
CONN. TYPE 1



CONN. TYPE 2



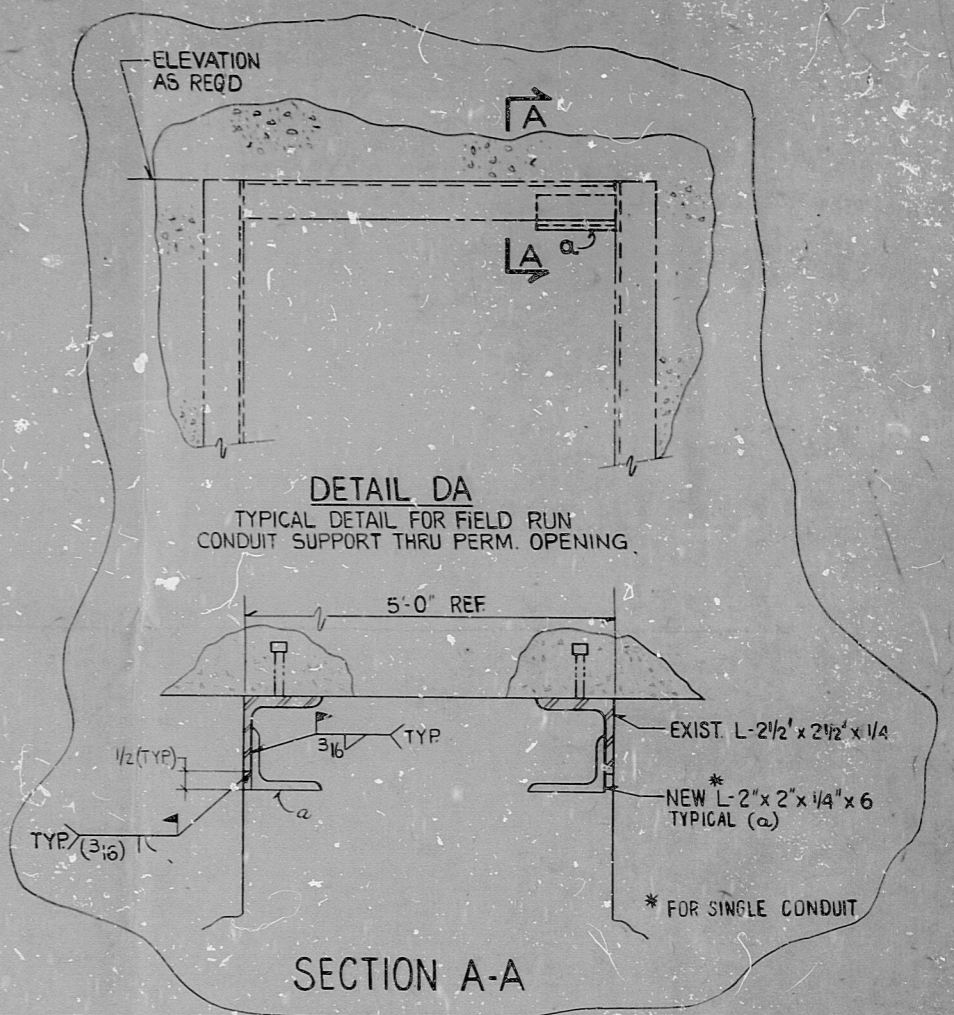
CONN. TYPE 3



CONN. TYPE 4

PREFABRICATED FITTINGS DETAILS

NOTE:
THIS SHEET IS APPLICABLE TO ALL BUILDINGS.



DETAIL DA

TYPICAL DETAIL FOR FIELD RUN CONDUIT SUPPORT THRU PERM. OPENING.

SECTION A-A

- NOTES:
1. TS FOR PREFABRICATED END FITTINGS SHALL BE SIZED TO SUIT CONDUIT SUPPORT MEMBERS.
 2. TS WALL THICKNESS TO BE 3/16 MIN.
 3. PREFABRICATED END FITTINGS SHALL BE MADE OF ASTM-A 36 SEAMLESS TUBE STEEL.

PRC
APERTURE
CARD

THIS SHEET IS FOR SEISMIC APPLICATIONS FOR ALL BUILDINGS.

| | | | | | | | |
|---------------------------------------|---------|------|-------------|--|--------------|-------------------------------|--|
| PCP-350-3978 INCORPORATED IN REV 3 | | | | NUCLEAR SAFETY RELATED | | WPPSS QUALITY CLASS I, II & G | |
| E BASCO SERVICES INCORPORATED | | | | WASHINGTON PUBLIC POWER SUPPLY SYSTEM | | WPPSS-3240 | |
| DIV. ELEC. DR. EDB | | | | NUCLEAR PROJECTS NO. 3 & 5 | | D-5023 | |
| CH. F. D. BEANE | | | | GENERAL NOTES, SYMBOLS AND REFERENCE DRAWINGS | | SHEET 55-7 | |
| REV | DATE | BY | APPROVED | DATE | APR 10, 1979 | | |
| 5 | 5-7-82 | S.P. | [Signature] | | | | |
| 4 | 7-21-81 | S.P. | [Signature] | | | | |
| 3 | 2-17-81 | S.P. | [Signature] | | | | |
| 2 | 8-22-80 | S.P. | [Signature] | | | | |
| 1 | | | | | | | |

RIDS

8303210300

