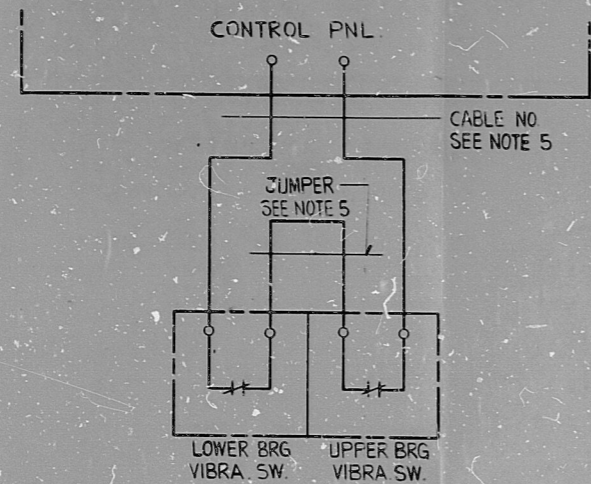


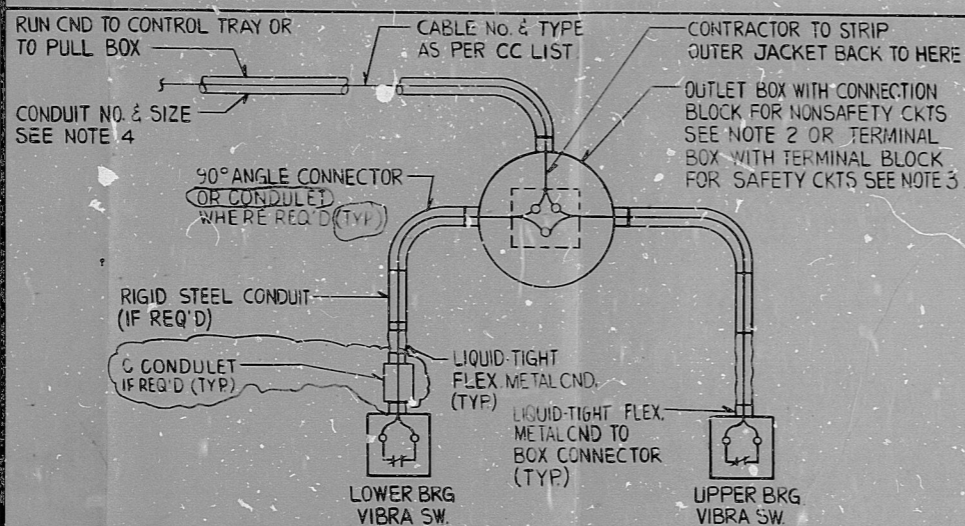
K02 10 1880 0-37 414088

**SAFETY OR NONSAFETY CIRCUITS**  
CONDUIT INSTALLATION DETAILS

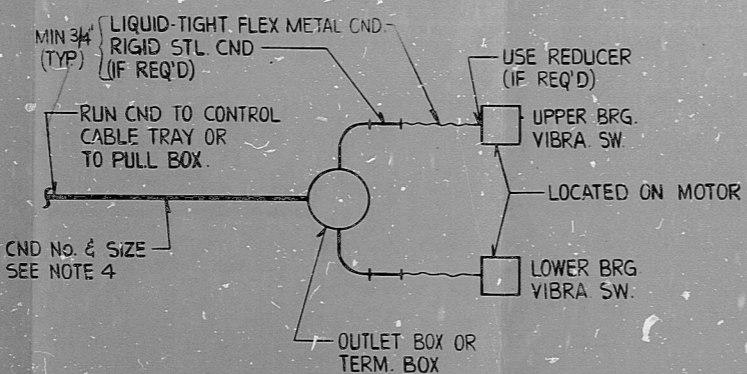
DET G



TYPICAL CWD PRESENTATION



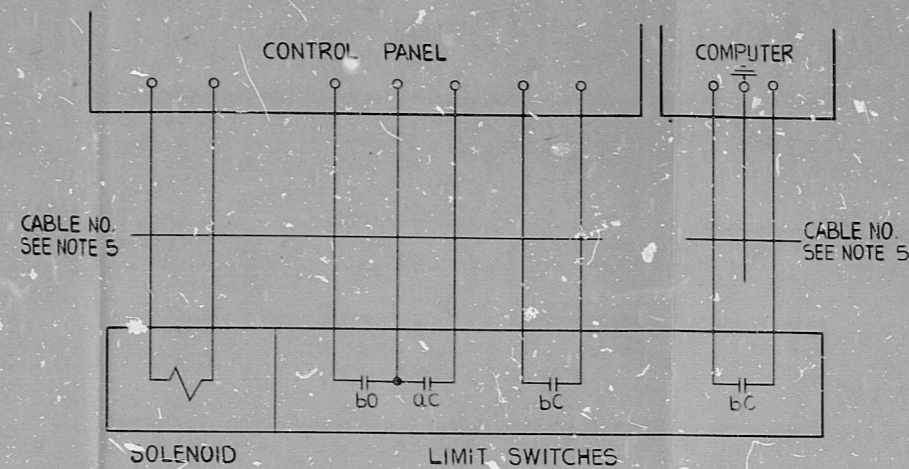
PHYSICAL CONNECTION AT SW'S



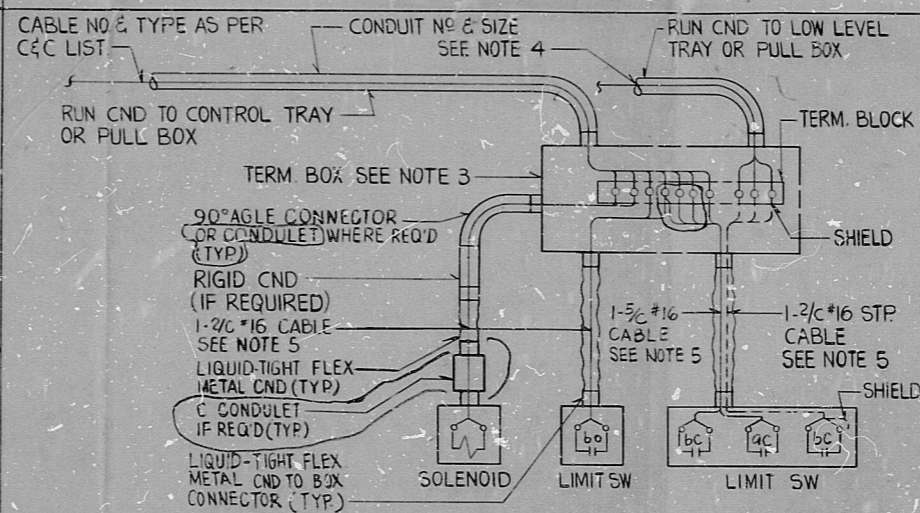
DWG. PRESENTATION  
(PAR. 3.03 L)

**SAFETY OR NONSAFETY CIRCUITS**  
CONDUIT INSTALLATION DETAILS

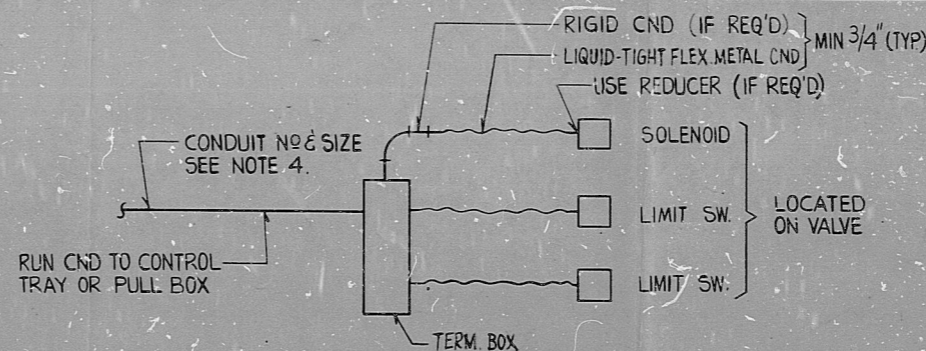
DET. H



TYPICAL CWD PRESENTATION



PHYSICAL CONNECTIONS AT VALVE



DWG. PRESENTATION  
(PAR. 3.03 L)

**NOTES**

1. FOR NOTES SEE SH 5L

PRC  
APERTURE  
CARD

NUCLEAR SAFETY RELATED WPPSS QUALITY CLASS I, II & G

3									
4									
3									
2	5-7-82	FL	AS	7/16	2/11/78				
1	2-17-81	AS	EP	7/16	2/11/78				
REV	DATE	BY	APPROVED	DATE AUG. 22, 1980		APPROVED		APPROVED	
EBASCO SERVICES INCORPORATED						WASHINGTON PUBLIC POWER SUPPLY SYSTEM		WPPSS-3240	
DIV. ELEC. DR. S.P.						NUCLEAR PROJECTS NO. 3 & 5		D-5023	
CH. K. ENG						GENERAL NOTES, SYMBOLS AND REFERENCE DRAWINGS		SHEET 5R	

**RIVS**

8303210278

