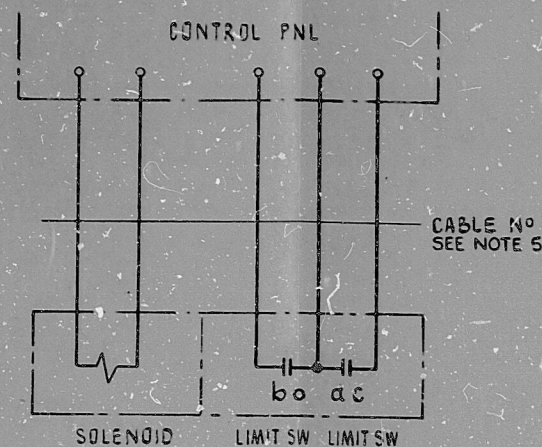
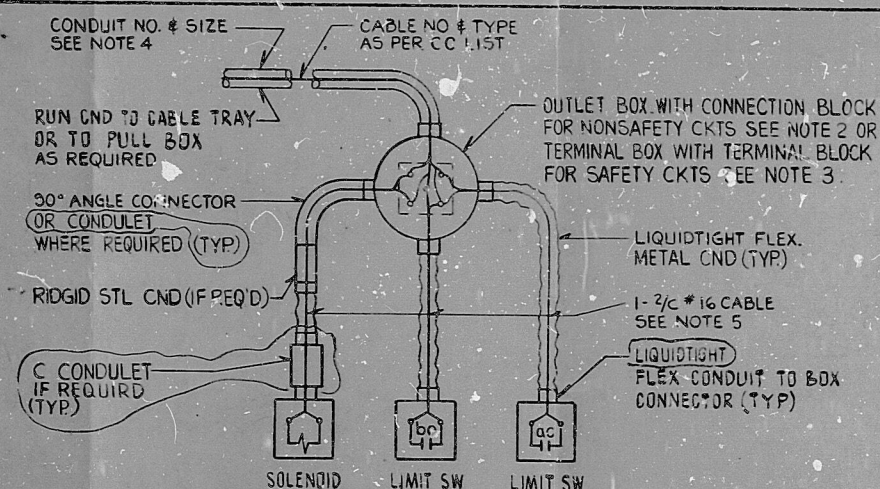


SAFETY OR NONSAFETY CKTS  
CONDUIT INSTALLATION DETAILS

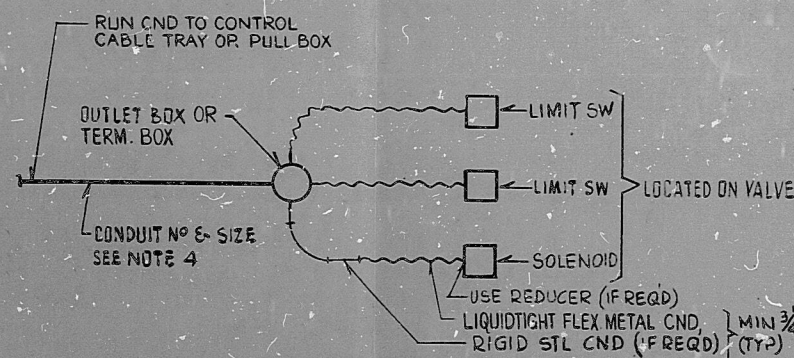
DET A



TYPICAL CWD PRESENTATION



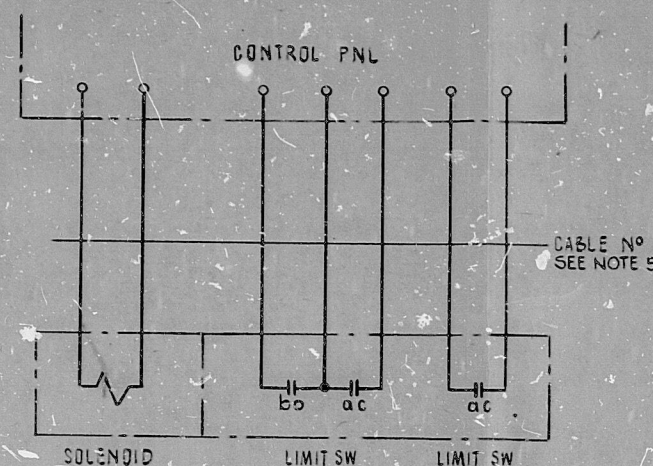
PHYSICAL CONNECTIONS AT VALVE



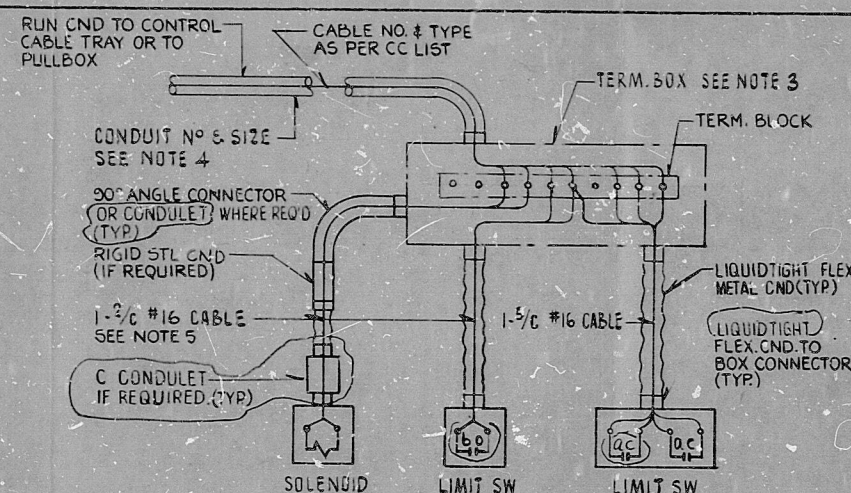
DWG PRESENTATION (PAR 3.03L)

SAFETY OR NONSAFETY CKTS  
CONDUIT INSTALLATION DETAILS

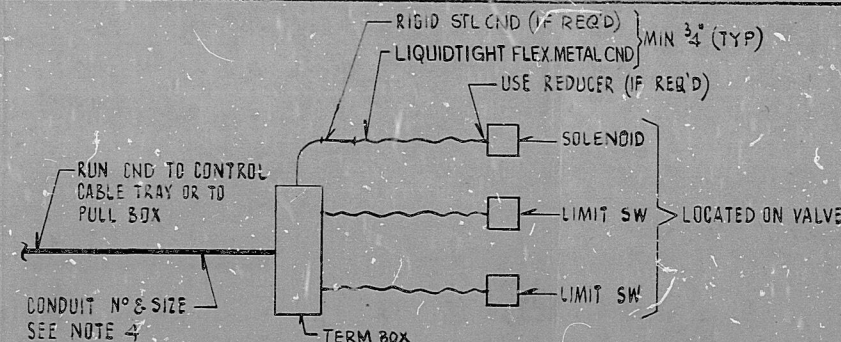
DET B



TYPICAL CWD PRESENTATION



PHYSICAL CONNECTIONS AT VALVE



DWG PRESENTATION (PAR 3.03L)

## NOTES

- 1 CONDUITS, FITTINGS, OUTLET OR TERMINAL BOXES TO BE FURNISHED & INSTALLED BY CONTRACTOR.
- 2 OUTLET BOX CROUSE-HINDS CAT #GS12 OR ENGINEER APPROVED EQUAL WITH CONNECTION BLOCK & BLANK COVER TO BE LOCATED CLOSE AS POSSIBLE TO VALVE SOLENOID & LIMIT SWITCHES SHALL BE USED FOR NON-SAFETY CIRCUITS ONLY.
- 3 TERM BOX CROUSE-HINDS CAT #WTBT 120604 OR ENGINEER APPROVED EQUAL TO BE LOCATED CLOSE AS POSSIBLE TO VALVE SOLENOID & LIMIT SWITCHES SHALL BE USED FOR SAFETY OR NON-SAFETY CIRCUITS.
- 4 CONDUIT SIZES 2" & BELOW TO BE INSTALLED BY CONTRACTOR AS PER CABLE & RACEWAY SYSTEM REPORT D15 "EXPOSED CONDUIT - FIELD ROUTED" ALL THESE CONDUITS TO HAVE MARKERS, CONDUITS FROM OUTLET BOX OR TERM. BOX TO SOLENOID OR LIMIT SWITCHES TO BE INSTALLED BY CONTRACTOR CONDUIT MARKERS NOT REQUIRED.
- 5 ALL CABLES TO BE FURNISHED BY OWNER & INSTALLED BY CONTRACTOR.
- 6 OUTLET BOX CROUSE-HINDS CAT #GS12 OR ENGINEER APPROVED EQUAL WITHOUT CONNECTION BLOCK & BLANK COVER TO BE LOCATED CLOSE AS POSSIBLE TO VALVE SOLENOID & LIMIT SWITCHES SHALL BE USED FOR SAFETY AND NON-SAFETY CIRCUITS.
- 7 OUTLET BOX CROUSE-HINDS CAT. WTB 120604 WITH MTG FEET OR ENGINEER APPROVED EQUAL TO BE LOCATED CLOSE AS POSSIBLE TO VALVE SOLENOID & LIMIT SWITCHES SHALL BE USED FOR SAFETY OR NON-SAFETY CIRCUITS.
- 8 ALL SEISMIC BOXES FOR SOLENOID VALVE CONNECTION SHALL BE SUPPORTED USING SEISMIC SUPPORT DETAILS SHOWN ON THE A/S D-5023A DWG. SERIES. BOX WEIGHT TO BE DETERMINED BY FIELD FOR DETERMINING SPECIFIC SUPPORT AND SUPPORT MEMBER SIZES PER THE TABLES ON THE A/S D-5023A DRAWINGS. BOX WEIGHT USED FOR SIZING SUPPORTS MUST BE TWO TIMES THE WEIGHT LISTED IN BOX CATALOG.

PRC  
APERTURE  
CARDDCN-ED-79  
INCORPORATED IN REV. 3

NUCLEAR SAFETY RELATED

WPPSS QUALITY CLASS II &amp; G

REV.	DATE	BY	APPROVED	DESCRIPTION
3				EBASCO SERVICES INCORPORATED
4				
5	5-7-82	SP		
2	2-17-81	AS		DIV. ELEC. DR. R.L.
1	8-22-80	SP		CH. E. SENKUS
				DATE APR 10, 1979

WASHINGTON PUBLIC POWER  
SUPPLY SYSTEM  
NUCLEAR PROJECTS NO. 3 & 5  
GENERAL NOTES, SYMBOLS AND  
REFERENCE DRAWINGS

WPPS-3240

D-5023

SHEET 5L



8303210272

