

FIG 1
CONDUIT JUMPER BETWEEN
POWER TRAYS OR CONTROL TRAYS
(MOUNTED ON SEPARATE SUPPORTS)

FIG 2
CONDUIT JUMPER BETWEEN
POWER TRAYS OR CONTROL TRAYS
(MOUNTED ON SEPARATE SUPPORT)

FIG 3
CONDUIT JUMPER BETWEEN
POWER TRAYS OR CONTROL TRAYS
(MOUNTED ON TRAY SUPPORTS)

FIG 4
CONDUIT JUMPER BETWEEN
POWER TRAYS OR CONTROL TRAYS
(MOUNTED ON TRAY SUPPORT)

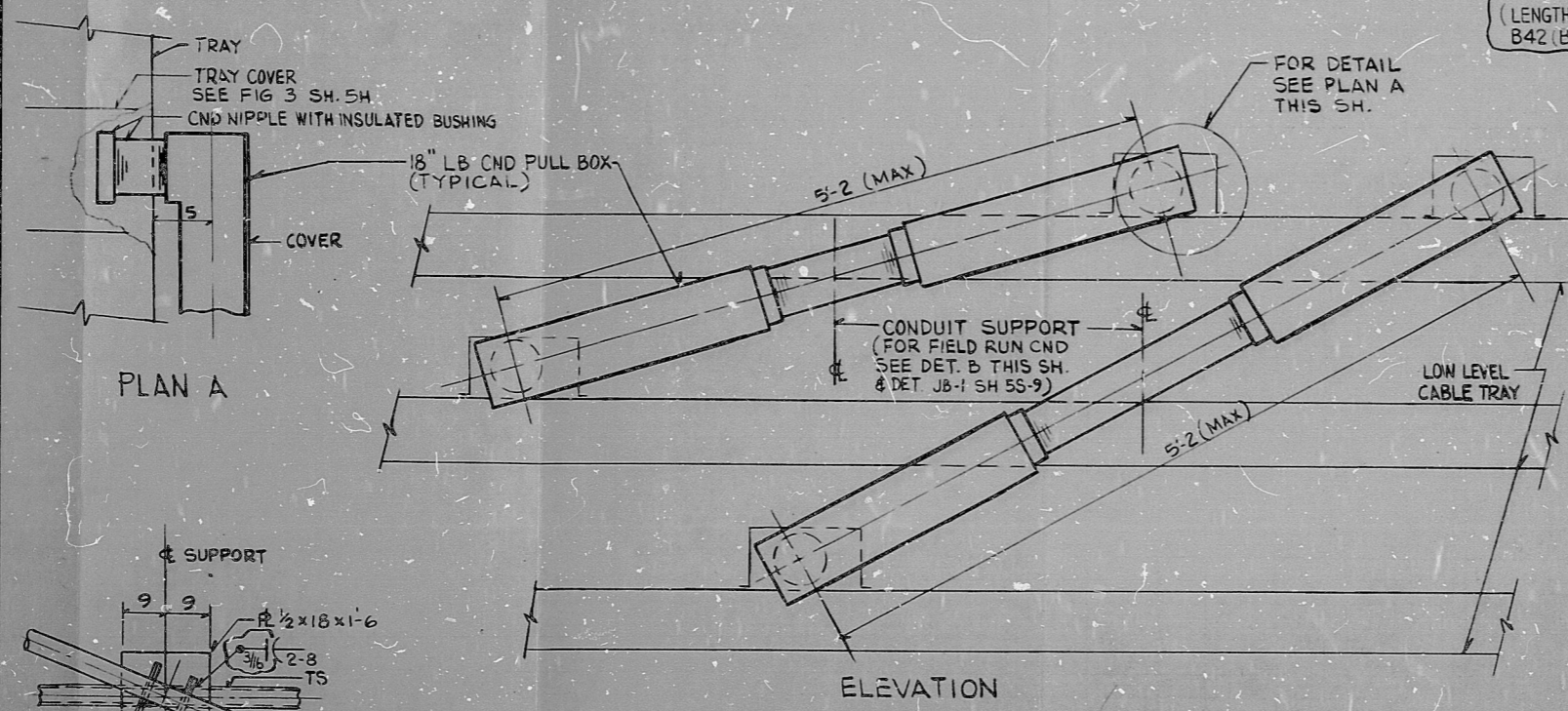
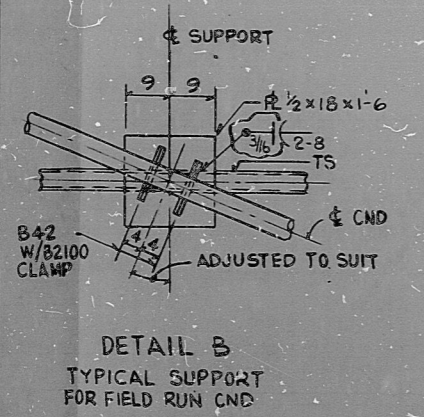
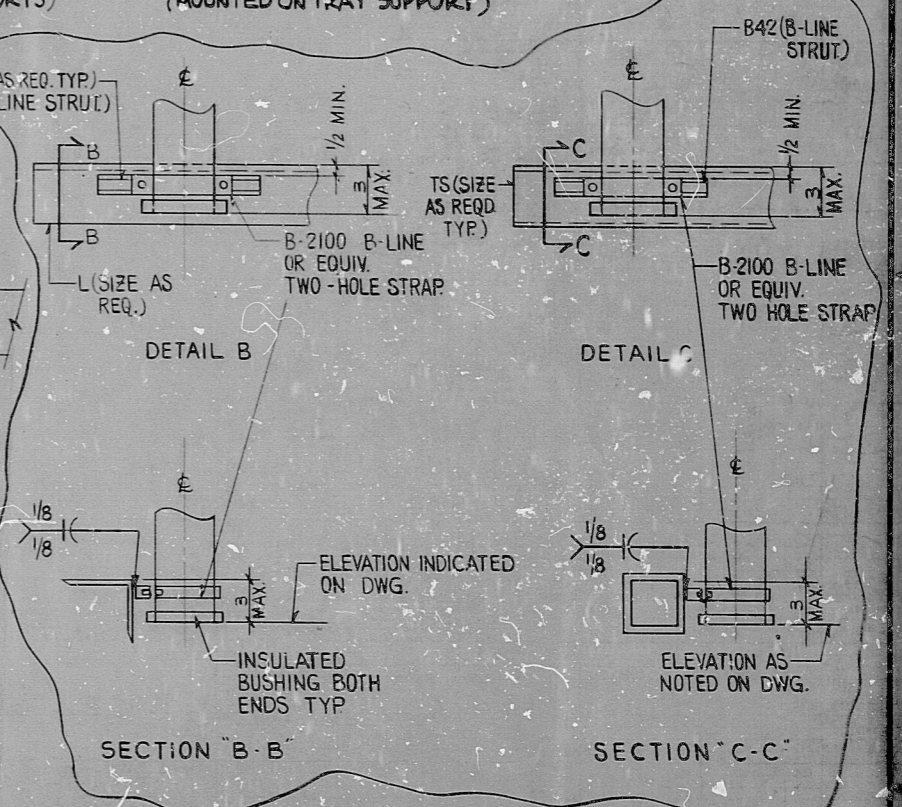


FIG 5
TYPICAL METHOD OF CONNECTING LOW LEVEL TRAYS WITH CONDUIT



DETAIL B
TYPICAL SUPPORT
FOR FIELD RUN CND

DCN-ED-90 PCP-35Q-3750, 5154
INCORPORATED IN REV. 1

REV.	DATE	BY	APPROVED
1	5-7-82	SP	[Signature]

EBASCO SERVICES INCORPORATED
DIV. ELEC. DR. RL
CH. K. ENG
DATE FEB 17, 1981

WASHINGTON PUBLIC POWER SUPPLY SYSTEM
NUCLEAR PROJECTS NO. 3 & 3
GENERAL NOTES, SYMBOLS AND REFERENCE DRAWINGS

WPPSS-3240
D-5023
SHEET 5

NUCLEAR SAFETY RELATED WPPSS QUALITY CLASS III & G

PRC
APERTURE
CARD

RIDS

8303210271

