

FIG. 1 (PAR. 3.03J)  
METHOD OF CONDUIT SEALING AT HVAC ENVELOPE

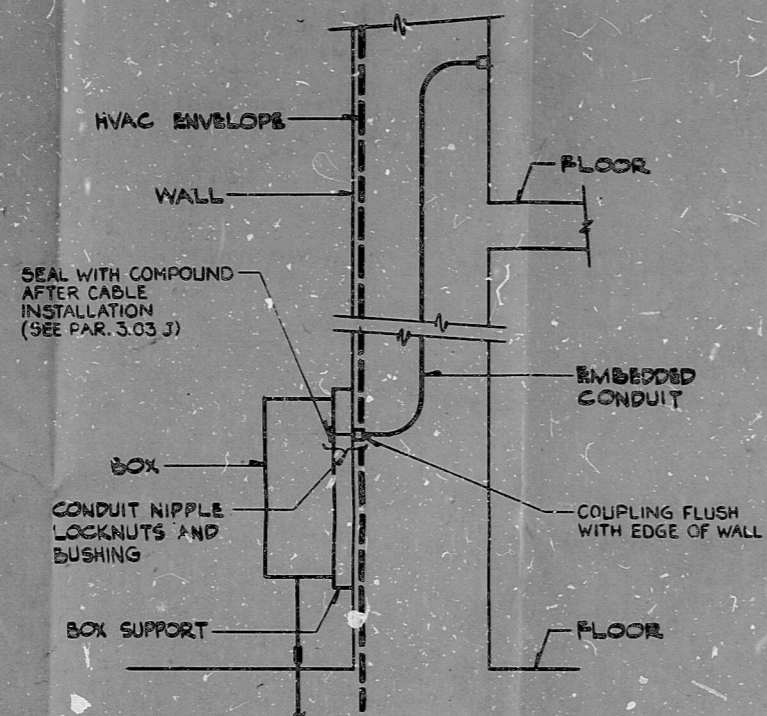


FIG. 1 (PAR. 3.03J)  
METHOD OF CONDUIT SEALING AT HVAC ENVELOPE

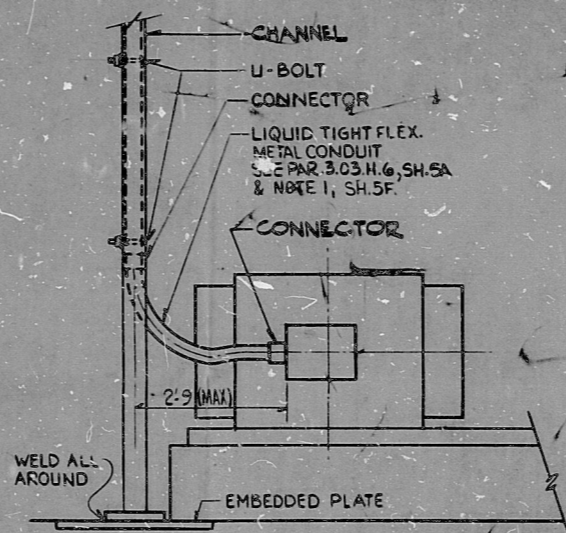


FIG. 2 (PAR. 3.03M)  
CONDUIT TERMINATING AT MOTOR FOR STRUCT. DETAILS SEE SH. 55-11

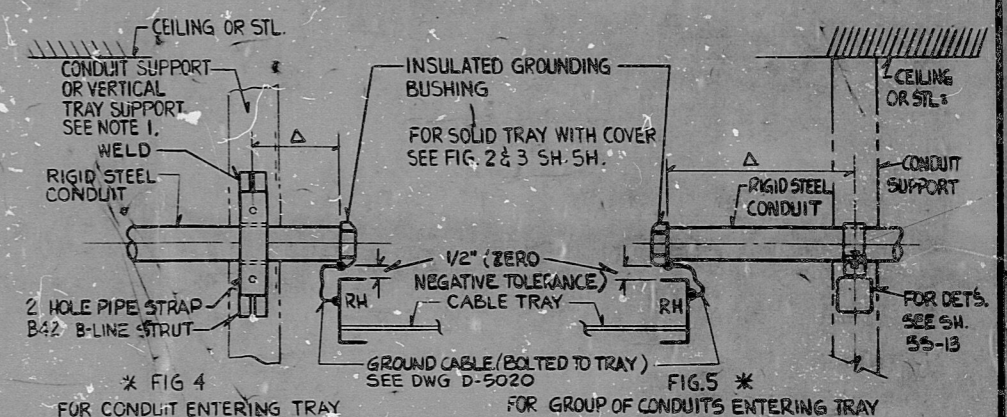


FIG. 4 FOR CONDUIT ENTERING TRAY  
FIG. 5 FOR GROUP OF CONDUITS ENTERING TRAY

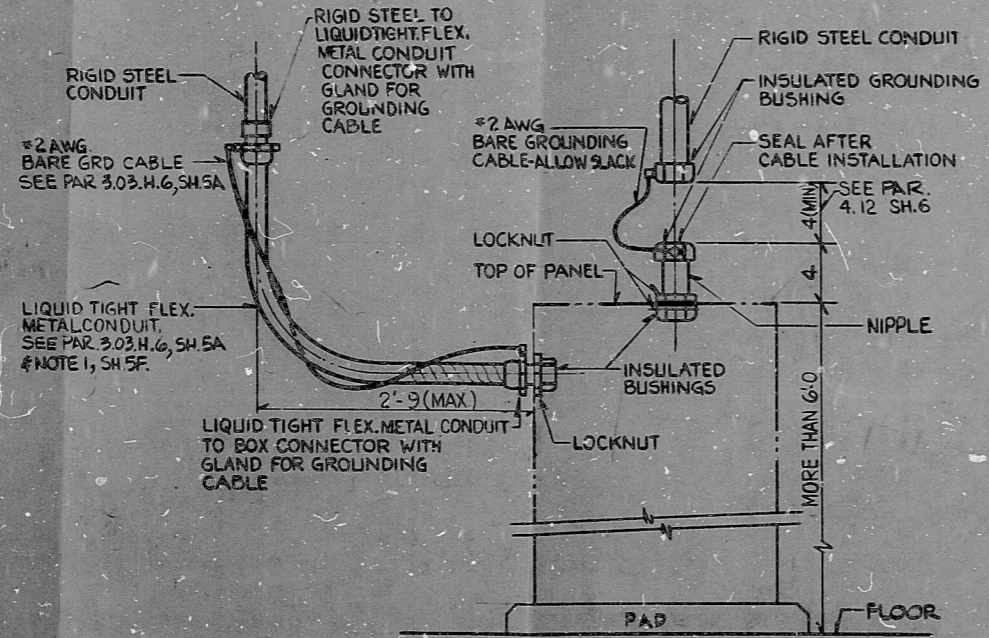


FIG. 6 (PAR. 3.04-5)  
TYPICAL TOP OR SIDE OF CONDUIT ENTRY TO ELECT. ENCLOSURES. (OVER 6'-0" HIGH)

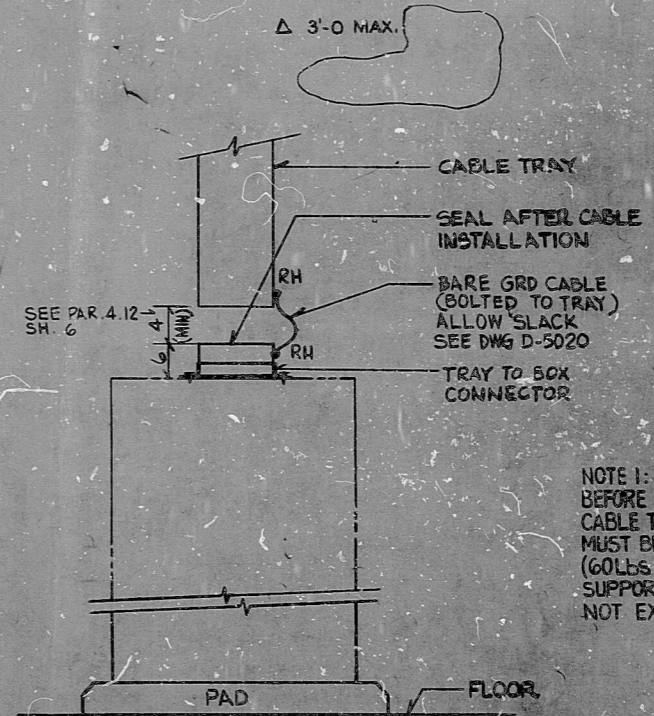


FIG. 8 (PAR. 4.17)  
TYPICAL TOP CABLE TRAY ENTRY TO ELECT. ENCLOSURES.

NOTE 1:  
BEFORE SUPPORTING CONDUITS ON CABLE TRAY SUPPORTS A CHECK MUST BE MADE THAT THE TOTAL LOAD (GOLBS PER FT.) THE CABLE TRAY SUPPORT WAS DESIGNED TO IS NOT EXCEEDED.

\* FOR SEISMIC APPLICATIONS IN RAB & FHB ONLY EXCEPT FOR FIGURES 6 & 8 WHICH ARE ALSO APPLICABLE TO NONSEISMIC APPLICATIONS WITHOUT THE 4" GAP BETWEEN THE CONDUIT OR TRAY AND THE ELEC. ENCLOSURE. THE FLEX. CONDUIT SHOWN ON FIG. 6 IS ARBITRARY FOR NONSEISMIC APPLICATIONS.  
\*\* FOR SEISMIC APPLICATIONS FOR ALL BUILDINGS.

DCN-ED-90, 106 INCORPORATED IN REV. 3			NUCLEAR SAFETY RELATED		WPPSS QUALITY CLASS ID: 6	
EBCO SERVICES INCORPORATED			WASHINGTON PUBLIC POWER SUPPLY SYSTEM		WPPS-0240	
DIV. ELEC. DR. A.S.J.			NUCLEAR PROJECTS NO. 3 & 5		D-5023	
CH. E. SENKUS			GENERAL NOTES, SYMBOLS AND REFERENCE DRAWINGS		SHEET 56	
DATE APR 10, 1979						
REV.	DATE	BY	APPROVED			
5						
4						
3	5-7-82	SP				
2	2-17-81	A.S.				
1	8-22-80	SP				

PRO APERTURE CARD

41

48

58

9.5"

11"

17"



RIDS

8303210265

