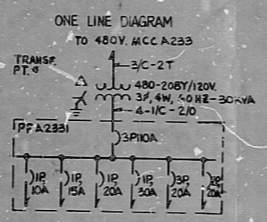


WPSS 3240 G 5017  
SHEET 10

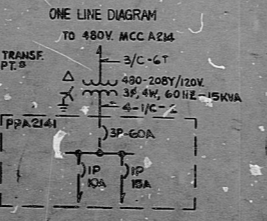
REV.	SERVICE	CMD NO OR CABLE NO.	CABLE SIZE (AWG)	CONN. LOAD VA	BKR. POLE	MAIN BUS	BKR. POLE	CONN. LOAD VA	CABLE SIZE (AWG)	CMD NO OR CABLE NO.	SERVICE	REV.
	CB-4 (LIGHTS & RECEPTS)		12	600		SN A B C						
	GAS STRIPPER PNL	2044K	12	168								
			5									
			7									
			9									
			11									
			13									
			15									
			17									
			19					1200	10	3083D	SP FILTER CONTROL PANEL	
			21									
	WASTE GAS RECOMBINER HT TRACING PNL	3305G	6	2500				500	1675			
			25									
			27	1000					1400			
	GAS STRIPPER PNL - COVT	2044D	6	2400				100	30			
			1445									
	CB-4	3294A	6	1425				170	32	3504C	WASTE GAS RECOMBINER CONTROLS-CI	
			1400					1780	34		WASTE GAS RECOMBINER HTR - C3	
								360	36		WASTE GAS RECOMBINER LOW LEVEL-C2, C4	

NAMEPLATE TITLE  
BUS NAMEPLATE  
209/120V AC PP NO A2331  
CABINET TYPE NEMA 3  
MIN REQ'D I.C. 10 KA RMS SYM  
NORMAL SERVICE 209/120V AC 4W GRD NEUTRAL  
MAIN BUS 125A  
MAIN LUG SIZE #2 MAIN BKR SIZE 110A  
MOUNTING SURFACE  
LOCATION BAY 6L 362  
CONNECTED LOAD  
PER PHASE A 6250 VA B 5220 VA C 4335 VA  
TOTAL CONNECTED LOAD 20705 VA



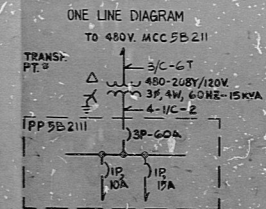
REV.	SERVICE	CMD NO OR CABLE NO.	CABLE SIZE (AWG)	CONN. LOAD VA	BKR. POLE	MAIN BUS	BKR. POLE	CONN. LOAD VA	CABLE SIZE (AWG)	CMD NO OR CABLE NO.	SERVICE	REV.
	M.U. DEMIN. CNTL. PNL UNITS	1822A	12	500		SN A B C						
	CHEM. WASTE NEUT. CP UNITS	1822B	3	500								
		1841E	5									
			7									
			9									
			11									
			13					1000	12	1003B	UNIT 3 M.U. DEMIN. CNTL. PNL	
			15									
			17									

NAMEPLATE TITLE  
BUS NAMEPLATE  
209/120V AC PP NO A2141  
CABINET TYPE NEMA 3  
MIN REQ'D I.C. 10 KA RMS SYM  
NORMAL SERVICE 209/120V AC 4W GRD NEUTRAL  
MAIN BUS 70A  
MAIN LUG SIZE #2 MAIN BKR SIZE 60A  
MOUNTING SURFACE  
LOCATION WASTEWATER TREATMENT PLANT  
CONN. LOAD PER PHASE A 3000 VA B 2000 VA C 1000 VA  
TOTAL CONN. LOAD 2000 VA



REV.	SERVICE	CMD NO OR CABLE NO.	CABLE SIZE (AWG)	CONN. LOAD VA	BKR. POLE	MAIN BUS	BKR. POLE	CONN. LOAD VA	CABLE SIZE (AWG)	CMD NO OR CABLE NO.	SERVICE	REV.
	DEIONIZED W. CIRC. V.		12	260		SN A B C						
			3	260								
			5									
			7									
			9									
			11									
			13									
			15									
			17									

NAMEPLATE TITLE  
BUS NAMEPLATE  
209/120V AC PP NO 252111  
CABINET TYPE IN MCC  
MIN REQ'D I.C. 10 KA RMS SYM  
NORMAL SERVICE 209/120V AC 4W GRD NEUTRAL  
MAIN BUS 70A  
MAIN LUG SIZE #2 MAIN BKR SIZE 60A  
MOUNTING IN MCC  
LOCATION DEION WAT. TR. AREA  
CONN. LOAD PER PHASE A 260 VA B 260 VA C 260 VA  
TOTAL CONN. LOAD 920



NOTES:  
1. FOR GENERAL NOTES, DISTRIBUTION PANEL NOTES, SYMBOLS, ABBREVIATIONS & REFERENCE DRAWINGS, SEE DWG. G-5017 SHEET 1.  
2. ALL CIRCUIT BREAKERS HAVE THERMAL-MAGNETIC TRIP.

WPSS QUALITY CLASS II

PRC APERTURE CARD

WASHINGTON PUBLIC POWER SUPPLY SYSTEM  
NUCLEAR PROJECTS NO. 3 & 5  
1500-1200 MW INSTALLATION  
1963-4500 MW INSTALLATION  
POWER DISTRIBUTION & MOTOR DATA SHEET  
209/120V AC PP A2331, A2141, 5B2111  
EBASCO SERVICES INCORPORATED  
DATE: 11-7-81  
WPPSS 3240 G 5017 SHEET 10



**RIDS**

8303210241

