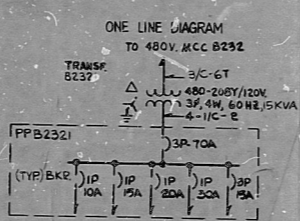


WPPS 3210-G-5017
SHEET 88

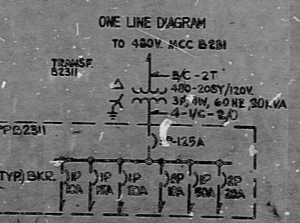
REV.	SERVICE	CMD NO OR CABLE NO.	CABLE SIZE (AWG)	CONN LOAD VA	BKR	MAIN BUS	BKR	CONN LOAD VA	CABLE SIZE (AWG)	CMD NO OR CABLE NO.	SERVICE	REV.
	FILTER CARTRIDGE TRANSFER CART	12	3	580		10	140	2	12		VA IRC-VP125 SNR-141SNR SP HTR	
	FILTER CARTRIDGE TRANSFER CART	12	3	580		10	140	2	12		VA IRC-VP125 SNR-141SNR SP HTR	
	FILTER CARTRIDGE TRANSFER CART	12	3	580		10	140	2	12		VA IRC-VP125 SNR-141SNR SP HTR	
	SEC. H.P. WASTE MOV											
	ACID ADDITION PUMP A CP											
	CAUSTIC ADDITION PUMP A CP											

NAMEPLATE TITLE
BUS NAMEPLATE
208/120VAC, PP NO. B2321
CABINET TYPE NEMA 3
MIN. REQ'D I.C.: 10 KA RMS SYM
NORMAL SERVICE 208V/120V, 3Ø, 4W, GRD NEUTRAL
MAIN BUS 125A
MAIN LUG SIZE #2 MAIN BKR. SIZE 10A
MOUNTING SURFACE
LOCATION R.A.D. 262.5'
CONN. LOAD PER # A 2540 VA, B 1730 VA, C 1720 VA
TOTAL CONN. LOAD 5990 VA



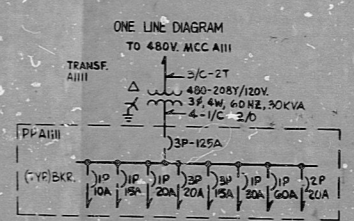
REV.	SERVICE	CMD NO OR CABLE NO.	CABLE SIZE (AWG)	CONN LOAD VA	BKR	MAIN BUS	BKR	CONN LOAD VA	CABLE SIZE (AWG)	CMD NO OR CABLE NO.	SERVICE	REV.
	SEC. PARTICULATE PRECOAT FILTER A DTK 1	12	3	400		10	300	2	12	3399A	VRS. INSTR. PUMP #2	
	CCTV CAMERA 8	7	6	60		10	70	6	12		CCTV MONITOR	
	SEC. PARTICULATE PRECOAT FILTER A DTK 2	12	3	400		10	300	2	12	3399B	S.W.S. CONSOLE	
	SEC. PARTICULATE PRECOAT FILTER A DTK 3	12	3	400		10	300	2	12	3399C	SEC. PARTICULATE PRECOAT LIGHT MOTOR	
	LINER GRABBER	12	3	270		10	160	2	12			
	DEWATERING TR. HTR	3362A	12	27	3	10	200	30	6	3355E	S.W.S. CONSOLE-CONTROL	
	SEC. PARTICULATE PRETREAT HTR/PE HTR	33582A	12	33	3	10	200	30	6	3355F	S.W.S. CONSOLE-FWR & RECP	

NAMEPLATE TITLE
BUS NAMEPLATE
208/120VAC, PP NO. B2311
CABINET TYPE NEMA 3
MIN. REQ'D I.C.: 10 KA RMS SYM
NORMAL SERVICE 208V/120V, 3Ø, 4W, GRD NEUTRAL
MAIN BUS 125A
MAIN LUG SIZE #2 MAIN BKR. SIZE 125A
MOUNTING SURFACE
LOCATION R.A.D. 270.0'
CONN. LOAD PER # A 2350 VA, B 3400 VA, C 4000 VA
TOTAL CONN. LOAD 10750 VA



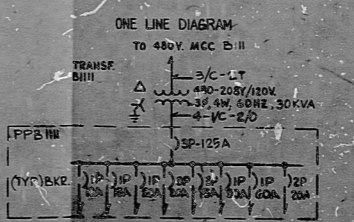
REV.	SERVICE	CMD NO OR CABLE NO.	CABLE SIZE (AWG)	CONN LOAD VA	BKR	MAIN BUS	BKR	CONN LOAD VA	CABLE SIZE (AWG)	CMD NO OR CABLE NO.	SERVICE	REV.
	VA IRC-VP125 SNR-141SNR SP HTR	1693H	12	3	50	10	140	2	12	1693H	VA IRC-VP125 SNR-141SNR SP HTR	
	13.8KV SWGR R.C.P.-5A	10	27	1000	15	3	1400	32	6		480V PC-A12	
	480V PC-A11	6	31	1400	20	2	1400	32	6		480V PC-A12	
	CEDM CAB 1 HTS, LTG.	1890K	2	37	6000	60	1	20	38		PERSONNEL LOCK	
	CEDM CAB 2 HTS, LTG.	1850J	39	6000	60	1	20	38				

NAMEPLATE TITLE
BUS NAMEPLATE
208/120VAC, PP NO. A1111
CABINET TYPE NEMA 3
MIN. REQ'D I.C.: 10 KA RMS SYM
NORMAL SERVICE 208V/120V, 3Ø, 4W, GRD NEUTRAL
MAIN BUS 125A
MAIN LUG SIZE #2 MAIN BKR. SIZE 125A
MOUNTING SURFACE
LOCATION R.A.D. 262.5'
CONN. LOAD PER # A 18250 VA, B 9850 VA, C 10000VA
TOTAL CONN. LOAD 38100 VA



REV.	SERVICE	CMD NO OR CABLE NO.	CABLE SIZE (AWG)	CONN LOAD VA	BKR	MAIN BUS	BKR	CONN LOAD VA	CABLE SIZE (AWG)	CMD NO OR CABLE NO.	SERVICE	REV.
	VA IRC-VP125 SNR-141SNR SP HTR	1694H	12	3	50	10	140	2	12	1692H	VA IRC-VP125 SNR-141SNR SP HTR	
	13.8KV SWGR R.C.P.-5B	10	27	1000	15	3	1400	32	6		480V PC-B12	
	480V PC-B11	6	31	1400	20	2	1400	32	6		480V PC-B12	
	CEDM CAB 3 HTS, LTG.	1890N	2	37	6000	60	1	20	38		ESCAPE LOCK	
	CEDM CAB 4 HTS, LTG.	1890P	39	6000	60	1	20	38				

NAMEPLATE TITLE
BUS NAMEPLATE
208/120VAC, PP NO. B1111
CABINET TYPE NEMA 3
MIN. REQ'D I.C.: 10 KA RMS SYM
NORMAL SERVICE 208V/120V, 3Ø, 4W, GRD NEUTRAL
MAIN BUS 125A
MAIN LUG SIZE #2 MAIN BKR. SIZE 125A
MOUNTING SURFACE
LOCATION R.A.D. 270.0'
CONN. LOAD PER # A 18250 VA, B 9850 VA, C 10000VA
TOTAL CONN. LOAD 38100 VA



NOTES:
1. FOR GENERAL NOTES DISTRIBUTION PANEL NOTES, SYMBOLS, ABBREVIATIONS & REFERENCE DRAWINGS SEE DWG. G-5017 SHEET 1.
2. ALL CIRCUIT BREAKERS HAVE THERMAL MAGNETIC.

WPPS QUALITY CLASS II

PRC APERTURE CARD

WASHINGTON PUBLIC POWER SUPPLY SYSTEM
NUCLEAR PROJECTS NO. 3645
1800-0000 WPPS INSTALLATION
1800-0000 WPPS INSTALLATION
POWER DISTRIBUTION & MOTOR DATA SHEET
120V/208V AC, PULLS A111, B111, B2311, B2351
ISSUED SERVICES INCORPORATED
DATE 1-6-79
WPPS 3210-G-5017
SHEET 88

RIDS

8302210240

