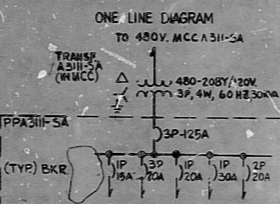


WPPS-3240-G-507
SHEET NO.

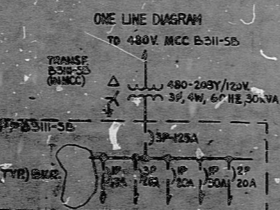
REV	SERVICE	CMD NO OR CABLE NO.	CABLE SIZE (AWG)	CONN LOAD VA	BKR	MAIN BUS	CONN LOAD VA	CABLE SIZE (AWG)	CMD NO OR CABLE NO.	SERVICE	REV
	ISOLATION V. SI-644	2197E	12	150			200	12	2974R	DAMPER D-5A	
	SI-651	2209E	3	150			200	4			
	DAMPEN D-17A	2975S	7	200			200	6	2975R	DAMPER D-7A	
	D-18A	2973T	9	200			200	8	2972E	3PV-B0355A SP HTR.	
	CHARGING P-3-1 SEAL LUBE P	2009F	11	300			25	12	2806E	2PV-B0045A	
	2PV-B0035A SP HTR.	2001F	13	20			14	14	2804E	2PV-B0275A	
	2PV-B045A	2773H	15	20			16	16	2535F	2PV-B0015A	
	CHARGING P-1-1 SEAL LUBE P	1996	17	300			200	18	2487H	CP-103	
							20	20			
							22	22			
							24	24	2740Q	WC-1A LOCAL	
							26	26			
							28	28	2777L	AC-1A FILTER	
							30	30			
							32	32			
							34	34			
							36	36			
							38	38			
	480V P.C. A32-5A		6	1300			1300	39			
							1300	40			
							42	42			

NAMEPLATE TITLE
BUS NAMEPLATE
208/120VAC PP NO A311-5A
CABINET TYPE (IN MCC)
MIN REQ'D I.C.: 10 KA RMS SYM
NORMAL SERVICE 208Y/120V 3Ø 4W GND NEUTRAL
MAIN BUS 122A
MAIN LUG SIZE #2/0 MAIN BKR SIZE 125A
MOUNTING (IN MCC)
LOCATION PAB EL 390
CONN. LOAD PER # A 1925 VA, B 1725 VA, C 1825 VA
TOTAL CONN. LOAD 5700 VA



REV	SERVICE	CMD NO OR CABLE NO.	CABLE SIZE (AWG)	CONN LOAD VA	BKR	MAIN BUS	CONN LOAD VA	CABLE SIZE (AWG)	CMD NO OR CABLE NO.	SERVICE	REV
	DAMPER D-5B	2963R	12	300			200	12	2987S	DAMPER D-17B	
	D-7B	2967R	5	200			200	4	2987T	D-18B	
	3PV-B1555B SP HTR.	2950E	7	20			25	8	2803E	3PV-B1255B SP HTR.	
	3PV-B1363B	2924E	9	20			10	10	2537P	2PV-B1015B	
	3PV-B1545B	2909E	11	20			12	12	2806F	2PV-B1055B	
	2PV-B1045B	2819E	13	20			14	14	2774H	2PV-B1145B	
	2PV-B1095B	2814E	15	20			16	16	2005	CHARGING P-3-1 SEAL LUBE P	
	CP-113	2490H	17	200			20	20			
	CHARGING P-2-1 SEAL LUBE P	2000	19	300			20	20			
							22	22			
							24	24	2990Q	WC-1B LOCAL PNL.	
							26	26			
							28	28			
							30	30	2789L	AC-1B FILTER	
							32	32			
							34	34			
							36	36			
							38	38			
	480V P.C. B32-5B		6	1300			1300	39			
							1300	40			
							42	42			

NAMEPLATE TITLE
BUS NAMEPLATE
208/120VAC PP NO B311-5B
CABINET TYPE (IN MCC)
MIN REQ'D I.C.: 10 KA RMS SYM
NORMAL SERVICE 208Y/120V 3Ø 4W GND NEUTRAL
MAIN BUS 122A
MAIN LUG SIZE #2/0 MAIN BKR SIZE 125A
MOUNTING (IN MCC)
LOCATION PAB EL 390
CONN. LOAD PER # A 1900 VA, B 2075 VA, C 1925 VA
TOTAL CONN. LOAD 5425 VA



REV	SERVICE	CMD NO OR CABLE NO.	CABLE SIZE (AWG)	CONN LOAD VA	BKR	MAIN BUS	CONN LOAD VA	CABLE SIZE (AWG)	CMD NO OR CABLE NO.	SERVICE	REV
	CP-60 DAMPERS	2892G	12	120			400	12		H3 ANALYZER	
	CP-104 DAMPERS	2866A	3	120			20	4	2488U	PCV-EC 4705A S	
	CP-104 DAMPERS	2778A	5	400			4	4			
	ISOLATION V. 2CC-B923 SP HTR.	2575C	7	150			8	8			
	DIESEL GEN A-SA CONT PNL	593A	9	100			10	10			
	ISOLATION V. 2CC-B924 SP HTR.	2591C	11	150			12	12			
							14	14			
							16	16			
							18	18			
							20	20			
							22	22			
							24	24			
							26	26			
							28	28			
							30	30			
							32	32			
							34	34			
							36	36			
							38	38			
	4KV SWGR A3-5A		10	600			1300	39			
							1300	40			
							42	42			

NAMEPLATE TITLE
BUS NAMEPLATE
208/120VAC PP NO A321-5A
CABINET TYPE (IN MCC)
MIN REQ'D I.C.: 10 KA RMS SYM
NORMAL SERVICE 208Y/120V 3Ø 4W GND NEUTRAL
MAIN BUS 122A
MAIN LUG SIZE #2/0 MAIN BKR SIZE 125A
MOUNTING (IN MCC)
LOCATION PAB EL 390
CONN. LOAD PER # A 2690 VA, B 2122 VA, C 1150 VA
TOTAL CONN. LOAD 5960 VA



REV	SERVICE	CMD NO OR CABLE NO.	CABLE SIZE (AWG)	CONN LOAD VA	BKR	MAIN BUS	CONN LOAD VA	CABLE SIZE (AWG)	CMD NO OR CABLE NO.	SERVICE	REV
	CP-69 UNIT COOLERS	2517G	12	240			150	2	2177E	SI-624 MOT HTR.	
	CP-114 DAMPERS	2789A	5	240			20	4	2488W	PCV-EC4905 BS	
							190	6	2210E	SI-692 MOT HTR.	
							230	8	2578A	CP-114 DAMPERS	
	SI-644	2167E	12	150			400	10		H3 ANALYZER	
	DIESEL GEN B-5B CONT PNL.	635A	11	100			12	12			
							14	14			
							16	16			
							18	18			
							20	20			
							22	22			
							24	24			
							26	26			
							28	28			
							30	30			
							32	32			
							34	34			
							36	36			
							38	38			
	4KV SWGR B3-5B		10	600			1300	39			
							1300	40			
							42	42			

NAMEPLATE TITLE
BUS NAMEPLATE
208/120VAC PP NO B322-5B
CABINET TYPE (IN MCC)
MIN REQ'D I.C.: 10 KA RMS SYM
NORMAL SERVICE 208Y/120V 3Ø 4W GND NEUTRAL
MAIN BUS 122A
MAIN LUG SIZE #2/0 MAIN BKR SIZE 125A
MOUNTING (IN MCC)
LOCATION PAB EL 390
CONN. LOAD PER # A 1300 VA, B 2490 VA, C 1090 VA
TOTAL CONN. LOAD 6100 VA



NOTES:
1. FOR GENERAL NOTES, DISTRIBUTION PANEL NOTES, SYMBOLS, ABBREVIATIONS & REFERENCE DRAWINGS, SEE DWG. G-507 SHEET 1.
2. ALL CIRCUIT BREAKERS HAVE THERMAL-MAGNETIC TRIP.

WPPSS QUALITY CLASS I

PRC APERTURE CARD

NUCLEAR SAFETY RELATED
KAPLON PUMPS POWER SUPPLY SYSTEM
NUCLEAR PRODUCTS NO. 3158
3158-001-001-001-001-001
3158-001-001-001-001-001
POWER SUPPLY SYSTEM DATA SHEET
208/120VAC PPA322-5A A322-5A B322-5B

RIDS

8303210233

