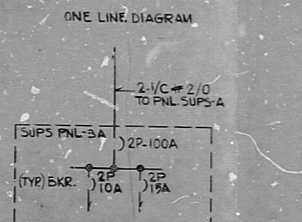


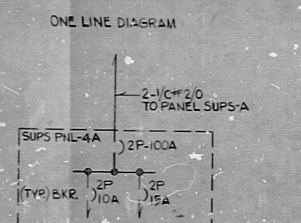
REV	SERVICE	CWD NO OR CABLE NO.	CABLE SIZE (AWG)	CONN LOAD VA	BKR AMPS POLE	MAIN BUS	BKR POLE AMPS	CONN. LOAD VA	CABLE SIZE (AWG)	CWT NO	CABLE OR CABLE NO.	SERVICE	REV
	INST. RACK RA-4	3189V	12	60	10	2	10	60	12	1982A	FT-210V		
	RA-5	3189R	3	30					4				
	RA-6	3119V	5	30				240	12	3229B	12W EWAP INSTR. RACK		
	RA-7	3119R	7	30				30	8	3032M	INST. RACK RA-19		
	CB-4	3092G	9	100				200	10	3224K	CB-4		
	CB-4	3092H	11	100				30	12	3032R	INST. RACK RA-16		

REV	SERVICE	CWD NO OR CABLE NO.	CABLE SIZE (AWG)	CONN. LOAD VA	BKR AMPS POLE	MAIN BUS	BKR POLE AMPS	CONN. LOAD VA	CABLE SIZE (AWG)	CWT NO	CABLE OR CABLE NO.	SERVICE	REV
	INST. RACK RA-17	3095P	12	30	10	2	10	30	2	1930Q	FIA-203		
	RA-21	3136R	12	30				30	4	3351A	FT-64B		
	CT-AC 2370	0791N	7	30				30	6	3083T	INST. RACK RA-15		

BUS NAMEPLATE
120VAC - PP NO. SUPS-3A
CABINET TYPE NEMA 3
MIN REQ'D I.C.: 10 KA RMS SYM
NORMAL SERVICE 120V, 10, 2W UNGROUNDED
MAIN BUS 100A
MAIN LUG SIZE 2/0
MOUNTING SURFACE
LOCATION RAB EL 362
TOTAL CONN. LOAD 910 VA



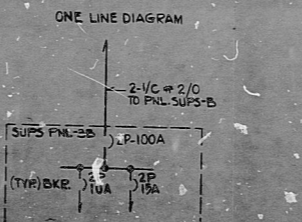
BUS NAMEPLATE
120VAC - PP NO. SUPS-4A
CABINET TYPE NEMA 3
MIN REQ'D I.C.: 10 KA RMS SYM
NORMAL SERVICE 120V, 10, 2W UNGROUNDED
MAIN BUS 100A
MAIN LUG SIZE 2/0
MOUNTING SURFACE
LOCATION RAB EL 362
TOTAL CONN. LOAD 180 VA



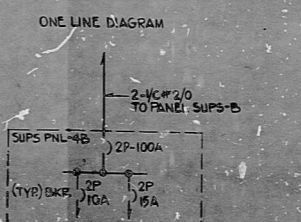
REV	SERVICE	CWD NO OR CABLE NO.	CABLE SIZE (AWG)	CONN. LOAD VA	BKR AMPS POLE	MAIN BUS	BKR POLE AMPS	CONN. LOAD VA	CABLE SIZE (AWG)	CWT NO	CABLE OR CABLE NO.	SERVICE	REV
	INST. RACK RA-2	3185M	12	60	10	2	10	60	2	1982A	INST. RACK RA-9		
	RA-1	3185F	3	30				60	4	3034M	RA-14		
	RA-6	3117M	5	30				30	6	3091M	RA-12		
	RA-13	3034P	7	30				240	8	3277B	FD EWAP INSTR. RACK		
	12W EWAP B INSTR. RACK	3241B	9	240				200	10	3270K	CB-4		
	CB-4	3117J	11	100				190	12	3117K	CB-4		

REV	SERVICE	CWD NO OR CABLE NO.	CABLE SIZE (AWG)	CONN. LOAD VA	BKR AMPS POLE	MAIN BUS	BKR POLE AMPS	CONN. LOAD VA	CABLE SIZE (AWG)	CWT NO	CABLE OR CABLE NO.	SERVICE	REV
	BORIC ACID BATCHING TK.	1954C	12	30	10	2	10	30	2	12	3136M	INST. RACK RA-20	
	INST. RACK RA-19	3136H	3	30				30	4	3188M	SP FILTER AID TK. LEVEL LT-WMS316		
	RA-22	3136V	5	30				30	6	3188M	SP FILTER PREGOAT K LEVEL LT-WMS317		
	RA-25	3034R	7	30				30	8	3034V	RA-30		
								30	10	3230L	RA-33		
								1000	20	10	2066A	CONCENTRATOR CONT. PNL.	

BUS NAMEPLATE
120VAC - PP NO. SUPS-3B
CABINET TYPE NEMA 3
MIN REQ'D I.C.: 10 KA RMS SYM
NORMAL SERVICE 120V, 10, 2W UNGROUNDED
MAIN BUS 100A
MAIN LUG SIZE 2/0
MOUNTING SURFACE
LOCATION RAB EL 362
TOTAL CONN. LOAD 1260 VA



BUS NAMEPLATE
120VAC - PP NO. SUPS-4B
CABINET TYPE NEMA 3
MIN REQ'D I.C.: 10 KA RMS SYM
NORMAL SERVICE 120V, 10, 2W UNGROUNDED
MAIN BUS 102A
MAIN LUG SIZE 2/0
MOUNTING SURFACE
LOCATION RAB EL 362
TOTAL CONN. LOAD 1470 VA



NOTES:
1. FOR GENERAL NOTES, DISTRIBUTION PANEL NOTES, SYMBOLS, ABBREVIATIONS & REFERENCE DR WINGS SEE DWG. G-5017 SHEET 1.
2. ALL CIRCUIT BREAKERS HAVE THERMAL MAGNETIC TRIP.

WPPSS QUALITY CLASS II

PRO APERTURE CARD

WASHINGTON PUBLIC POWER SUPPLY SYSTEM
NUCLEAR PROJECTS NO. 3 & 5
1981-1983 NEW INSTALLATION
1983-1985 NEW INSTALLATION
POWER DISTRIBUTION & MOTOR DATA SHEET
120VAC PP SUPS-3A, SUPS-4A, SUPS-3B, SUPS-4B

EBASCO SERVICES INCORPORATED

DATE: 11-6-79
DRAWN BY: [Signature]
CHECKED BY: [Signature]
WPPSS-3240
SHEET 08

RIDS

8303210230

