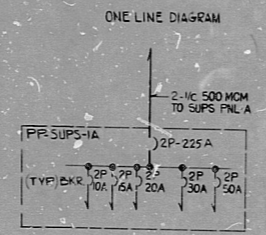


WPPS-3240 G-5017
SHEET 107

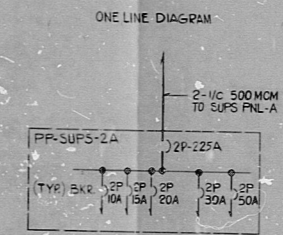
REV	SERVICE	CMD NO OR CABLE NO	CABLE SIZE (AWG)	CONN LOAD VA	BKR AMPS POLE	MAIN BUS	BKR AMPS POLE	CONN LOAD VA	CMD NO OR CABLE NO	CABLE SIZE (AWG)	CONN LOAD VA	BKR AMPS POLE	MAIN BUS	BKR AMPS POLE	CONN LOAD VA	CMD NO OR CABLE NO	SERVICE	REV
	CP-15	0060E	12	130	10	2	10	130	2	0060D	12	130	10	2	0060D	12	CP-14	
	CB-2	1757A	3	150	4	150	4	150	4	1751B	3	150	4	150	4	1751B	CP-9	
	CP-83	1794A	5	350	6	800	6	800	6	0680C	5	350	6	800	6	0680C	CP-02	
	CP-03	0655A	7	250	8	150	8	150	8		7	250	8	150	8		TEL. (UNIT 3 ONLY)	
	REACTOR CONT. EVACUATION AL		9	310	1	600	10	600	10		9	310	1	600	10		PLANT RADIO BASE STATION REMOTE SHUTDOWN RM	
			11	15	15	30	14	30	14		11	15	15	30	14			
			13	20	20	40	14	40	14		13	20	20	40	14			
	CEDMCS CAB 1	1850A	6	1500	16	2000	16	2000	16		6	1500	16	2000	16		HIGH-LEVEL PAGING CH.1	
	CEDMCS CAB 2	1850C	6	17000	30	50	18	50	18		6	17000	30	50	18			
			9	50	50	100	20	100	20		9	50	50	100	20			

BUS NAMEPLATE
120 VAC PP NO SUPS-1A
CABINET TYPE NEMA 3
MIN REQ'D I.C.: 10 KA RMS SYM
NORMAL SERVICE 120V, 1Ø, 2W UNGROUNDED
MAIN BUS 225A
MAIN LUG SIZE 500 MCM
MOUNTING SURFACE
LOCATION RAB EL 390
TOTAL CONN. LOAD 3420 VA



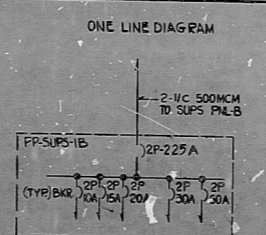
REV	SERVICE	CMD NO OR CABLE NO	CABLE SIZE (AWG)	CONN LOAD VA	BKR AMPS POLE	MAIN BUS	BKR AMPS POLE	CONN LOAD VA	CMD NO OR CABLE NO	CABLE SIZE (AWG)	CONN LOAD VA	BKR AMPS POLE	MAIN BUS	BKR AMPS POLE	CONN LOAD VA	CMD NO OR CABLE NO	SERVICE	REV
	CP-30	0790L	12	500	10	2	10	500	2	1046N	12	500	10	2	1046N	CP-31		
	CP-10B	1954Q	3	10	4	100	4	100	4	1153Y	3	10	4	100	4	1153Y	CP-33	
	CP-43	1928U	5	100	6	100	6	100	6	1928T	5	100	6	100	6	1928T	CP-41	
	CP-91	1803A	7	300	8	300	8	300	8	1732L	7	300	8	300	8	1732L	REACTOR TRIP SWGR. CUB. RB	
	CP-42	2029R	7	300	8	300	8	300	8		7	300	8	300	8			
			11	15	15	30	14	30	14		11	15	15	30	14			
			13	20	20	40	14	40	14		13	20	20	40	14			
	CEDMCS CAB 3	1850E	6	1500	16	2000	16	2000	16		6	1500	16	2000	16		HIGH-LEVEL PAGING CH.2	
			17	30	30	60	18	60	18		17	30	30	60	18		TELEPHONE	
	CEDMCS CAB 4	1850G	2	19000	50	150	20	150	20		2	19000	50	150	20			

BUS NAMEPLATE
120 VAC PP NO SUPS-2A
CABINET TYPE NEMA 3
MIN REQ'D I.C.: 10 KA RMS SYM
NORMAL SERVICE 120V, 1Ø, 2W UNGROUNDED
MAIN BUS 225A
MAIN LUG SIZE 500 MCM
MOUNTING SURFACE
LOCATION RAB EL 390
TOTAL CONN. LOAD 2440 VA



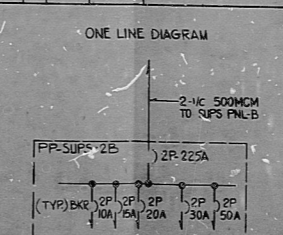
REV	SERVICE	CMD NO OR CABLE NO	CABLE SIZE (AWG)	CONN LOAD VA	BKR AMPS POLE	MAIN BUS	BKR AMPS POLE	CONN LOAD VA	CMD NO OR CABLE NO	CABLE SIZE (AWG)	CONN LOAD VA	BKR AMPS POLE	MAIN BUS	BKR AMPS POLE	CONN LOAD VA	CMD NO OR CABLE NO	SERVICE	REV
	CP-63	0667A	12	300	10	2	10	300	2	0657A	12	300	10	2	0657A	CP-03		
	CP-83	1794B	5	350	6	800	6	800	6	1980Q	5	350	6	800	6	1980Q	CP-56	
	CP-59	3-21A	5	250	8	100	8	100	8		5	250	8	100	8		PLANT RADIO CONTROL RM	
	REFUELING		7	110	10	10	8	10	8	1954P	7	110	10	10	8	1954P	CP-118	
			9	10	10	20	14	20	14		9	10	10	20	14			
			11	15	15	30	14	30	14		11	15	15	30	14			
	HIGH-LEVEL PAGING CH.3		6	15000	20	14	14	15000	20		6	15000	20	14	14			
	CEDMCS CAB 1	1850B	6	1500	16	2000	16	2000	16	0710A	6	1500	16	2000	16	0710A	CB-27	
	CEDMCS CAB 2	1850D	6	17000	30	50	18	50	18		6	17000	30	50	18			
			9	50	50	100	20	100	20		9	50	50	100	20			

BUS NAMEPLATE
120 VAC PP NO SUPS-1B
CABINET TYPE NEMA 3
MIN REQ'D I.C.: 10 KA RMS SYM
NORMAL SERVICE 120V, 1Ø, 2W UNGROUNDED
MAIN BUS 225A
MAIN LUG SIZE 500 MCM
MOUNTING SURFACE
LOCATION RAB EL 390
TOTAL CONN. LOAD 5590 VA



REV	SERVICE	CMD NO OR CABLE NO	CABLE SIZE (AWG)	CONN LOAD VA	BKR AMPS POLE	MAIN BUS	BKR AMPS POLE	CONN LOAD VA	CMD NO OR CABLE NO	CABLE SIZE (AWG)	CONN LOAD VA	BKR AMPS POLE	MAIN BUS	BKR AMPS POLE	CONN LOAD VA	CMD NO OR CABLE NO	SERVICE	REV
	CP-34	0742X	12	500	10	2	10	500	2	1618W	12	500	10	2	1618W	CP-61		
	CP-36	1616Q	3	500	4	500	4	500	4	1C43S	3	500	4	500	4	1C43S	CP-37	
	CP-30	1649S	5	500	6	500	6	500	6	1256H	5	500	6	500	6	1256H	CP-32	
	CP-51	1148T	7	120	30	8	1820A	30	8	1820A	7	120	30	8	1820A	CP-37		
	LT-30	3558A	9	50	10	1500	10	1500	10	1620R	9	50	10	1500	10	1620R	CP-35	
	REACTOR TRIP SWGR. CUB. RB	1733L	7	300	8	300	8	300	8		7	300	8	300	8			
	HIGH-LEVEL PAGING CH.4		6	15000	20	14	14	15000	20		6	15000	20	14	14			
	CEDMCS CAB 3	1850F	6	1500	16	2000	16	2000	16		6	1500	16	2000	16			
			17	30	30	60	18	60	18		17	30	30	60	18		TELEPHONE	
	CEDMCS CAB 4	1850H	2	19000	50	150	20	150	20		2	19000	50	150	20			

BUS NAMEPLATE
120 VAC PP NO SUPS-2B
CABINET TYPE NEMA 3
MIN REQ'D I.C.: 10 KA RMS SYM
NORMAL SERVICE 120V, 1Ø, 2W UNGROUNDED
MAIN BUS 225A
MAIN LUG SIZE 500 MCM
MOUNTING SURFACE
LOCATION RAB EL 390
TOTAL CONN. LOAD 1420 VA



NOTES:
1. FOR GENERAL NOTES, DISTRIBUTION PANEL NOTES, SYMBOLS, ABBREVIATIONS & REFERENCE DRAWINGS, SEE DWG. G-5017 SHEET 1.
2. ALL CIRCUIT BREAKERS HAVE THERMAL MAGNETIC TRIP.

WPPSS QUALITY CLASS II

PRG APERTURE CARD

WASHINGTON PUBLIC POWER SUPPLY SYSTEM
NUCLEAR PROJECTS NO. 3 & 5
1974-1980 NEW INSTALLATION
1975-1980 NEW INSTALLATION
POWER DISTRIBUTION & MOTOR DATA SHEET
120 V AC PP SUPS-1A, 1B, 2A, 2B
EASCO SERVICES INCORPORATED
DATE: 8-6-79
WPPS-3240
G-5017
SHEET 107

RIDS

8303210228

