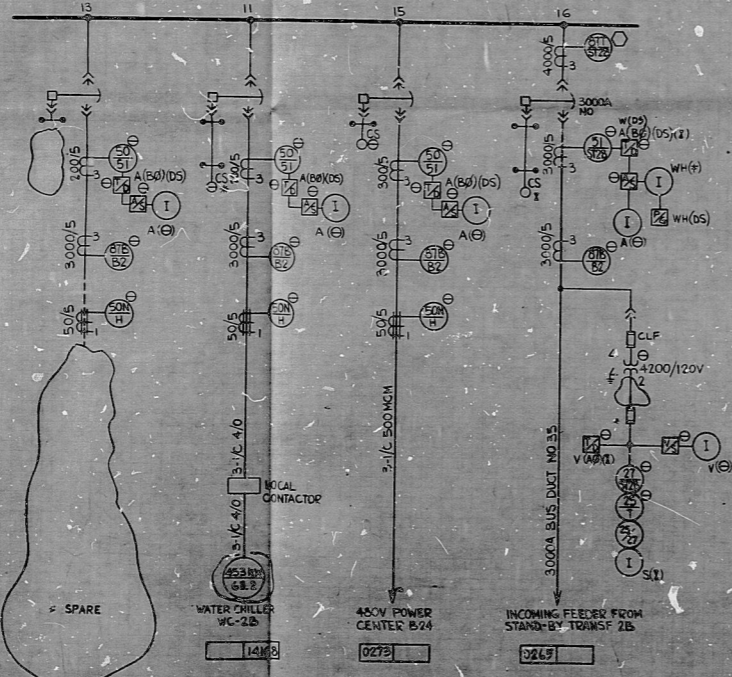
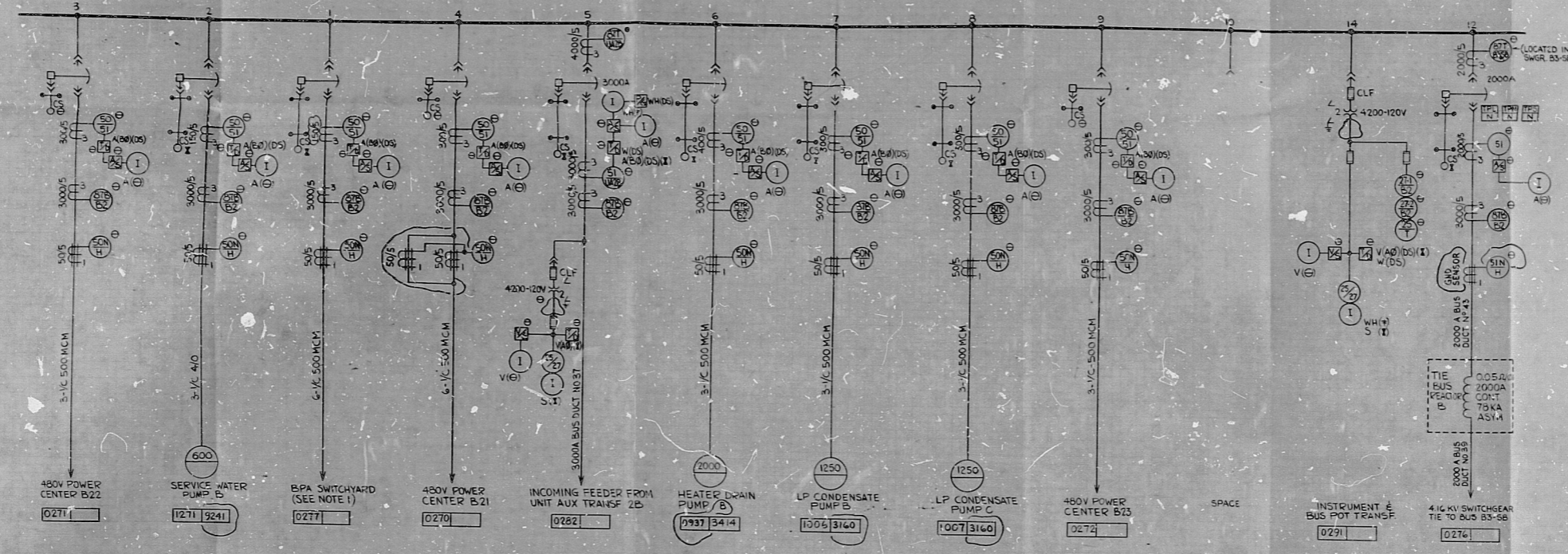


WPPS-3240-G-5017
SHEET 7

4.16 KV SWGR R2 (3000A BUS 350MVA) (TURBINE BLDG. EL. 423.0)



NOTE
FOR GENERAL NOTES, 4.16KV SWITCHGEAR
NOTES, SYMBOLS, ABBREVIATIONS
& REFERENCE DRAWINGS SEE DWG. G-5017
SHEET 1

WPPSS QUALITY CLASS II

PRC
APERTURE
CARD

WASHINGTON PUBLIC POWER SUPPLY SYSTEM
NUCLEAR PROJECTS NO 385
1984-1985 INSTALLATION
1984-1985 INSTALLATION
POWER DISTRIBUTION AND MOTOR DATA SHEET
4.16 KV SWITCHGEAR B2

REVISIONS: (A) UNIT #18 MADE SPARE, DISCONNECTED
ADDED: (B) CHANGE AND CT TO AGREE WITH M&E INVOICES, GS, GS
(C) (D) (E) OR EMERGENCY NOS. (F) (G) (H) (I) (J) (K) (L) (M) (N) (O) (P) (Q) (R) (S) (T) (U) (V) (W) (X) (Y) (Z)

NO.	DATE	BY	CHKD.
1	11-14-77	W.P.	W.P.
2	11-14-77	W.P.	W.P.
3	11-14-77	W.P.	W.P.

DATE: 2-14-77
SHEET: 7 OF 7
WPPSS
0-5017

RIDs

8303210148

