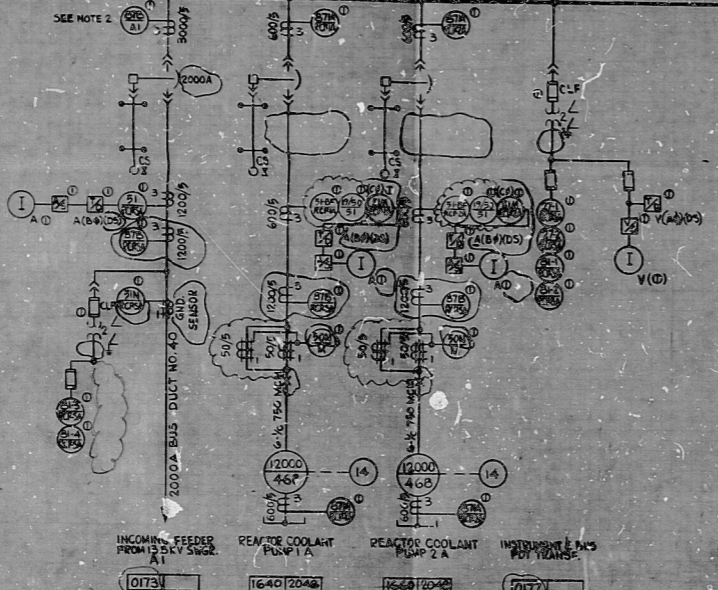
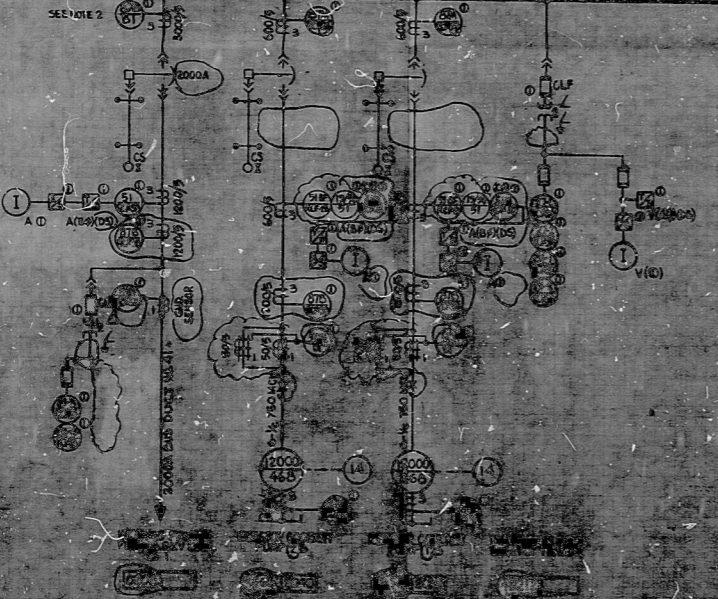


WPPS-3240-G-5017
SHEET 4

13.8KV SWGR RCP-SA (2000A BUS 1000MVA) (REACTOR AUX. BLDG. EL. 350'-0)



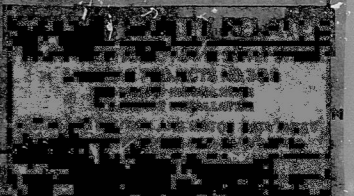
13.8KV SWGR RCP-SB (2000A BUS 1000MVA) (REACTOR AUX. BLDG. EL. 390'-0)



NOTE:
1. FOR GENERAL NOTES, 13.8KV SWITCHGEAR
NOTES, 2. UNLESS INDICATED OTHERWISE,
ELEMENTS DRAWINGS SET DWG-G-5017-
SR.
2. RELAYS 07D/A1 & 07D/B1 ARE LOCATED
IN 15.0KV SWGR A1 & B1 RESPECTIVELY
IN TURBINE BLDG.

WPPS QUALITY CLASS I&II

PRC
APERTURE
CARD



RIDS

830321046

