

919-W

TROLLEY TYPES

1. HAND TROLLEY (HTH)
2. MOTORIZED TROLLEY (MT)

HOIST TYPES

1. HAND CHAIN HOIST (HCH)
2. ELECTRIC WIRE ROPE (EWR)

INTEGRAL TROLLEY HOIST TYPES*

1. HAND TROLLEY HOIST WITH ELECTRIC WIRE ROPE TROLLEY HOIST (EWR-TTH)
 2. RAIL HUGGER (APPLIES TO HTH AND EWR-TTH)
- *EXCEPT FOR JOBS SAID ALL TROLLEY HOISTS USE THE SAME TROLLEY DRIVE AS HOIST DRIVE.

CAPACITY MARKINGS (ALL SYSTEMS)

THE SYSTEM CAPACITY MARKED ON THE SIDE OF THE PTS, RUNWAY, OR OR TROLLEY BEAM IS THE CAPACITY OF THE HOIST WHICH WILL NORMALLY BE USED ON THAT SYSTEM. FOR INSTANCE, TROLLEY BEAM 12 IS MARKED 10 TON SINCE AN 8 TON HAND HOIST AND TROLLEY AND TWO TON EWR-TTH IS USED.

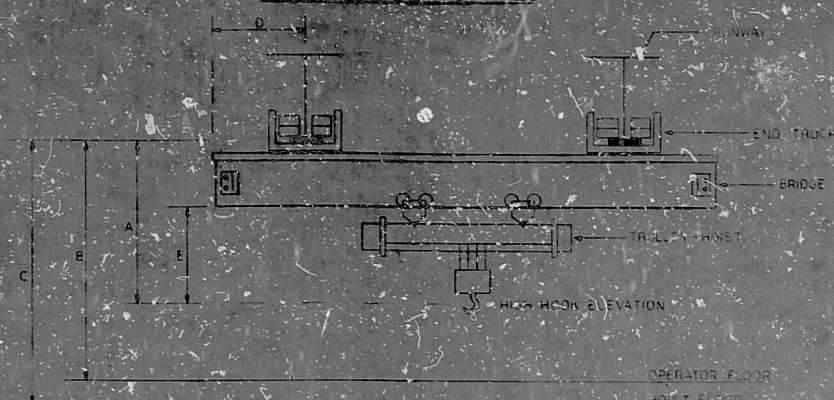
ELECTRIFICATION

SEE VENDOR DRAWINGS FOR ELECTRICAL FEEDS AND CONDUCTOR SIZES.

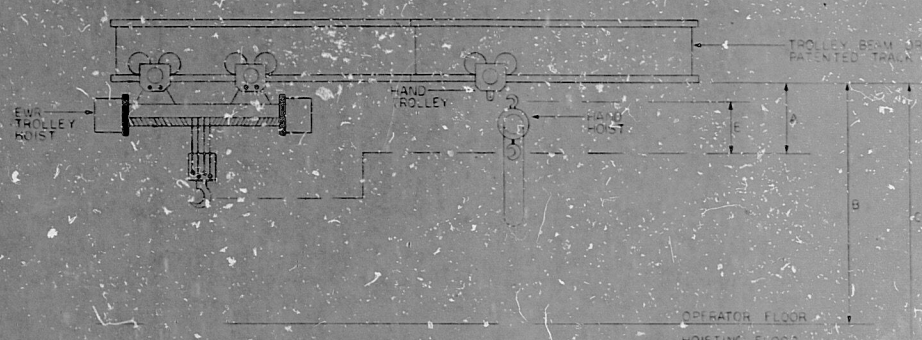
NOTES (FROM M-516-1 AND M-516-2)

1. GEAR REDUCER ON TROLLEY TO GIVE EXTRA LOW SPEED.
2. THREE TROLLEY HOISTS ARE SAFELY EQUIPPED WITH BRAKES, TWO-SPEED TROLLEYS, AND SAFETY LUGS. BALL-CROW WHEELS ARE USED ON THE TROLLEY TO PERMIT USE ON T-BEAMS OR PTS. A SPECIAL CONTROL STATION IS PROVIDED ON ONE OF THE HOISTS TO PERMIT CONTROLLING ALL FOUR 15 TON HOISTS WHEN USED ON PTS.
3. THESE SYSTEMS HAVE REMOVABLE SECTIONS IN THE BEAMS, EXCLUSIVE OF SLINGS, ROLLERS, LOAD SPREADER BEAMS, ETC.
4. ALL TROLLEY BEAMS AND ASSOCIATED SUPPORT STEEL LISTED ON M-516-1 UNLESS NOTED ON THE M-517 DRAWING SHALL BE FURNISHED BY F-2824 AND P.O. 224823 (BRAIDWOOD) AND ERECTED BY F-2824 AND P.O. 224823 (BRAIDWOOD).
5. ALL HOISTING EQUIPMENT NOTED ON M-516-1 AND 2, SHALL BE SUPPLIED BY F-2824 AND ERECTED BY F-2824 AND P.O. 224823.
6. ALL JOBS CRANES (SINGLE GIRDER CRANES (16) AND PATENTED TRACK SYSTEMS (PTS) ON M-516-2 WILL BE SUPPLIED BY F-2824 AND ERECTED BY F-2824 AND P.O. 224823.

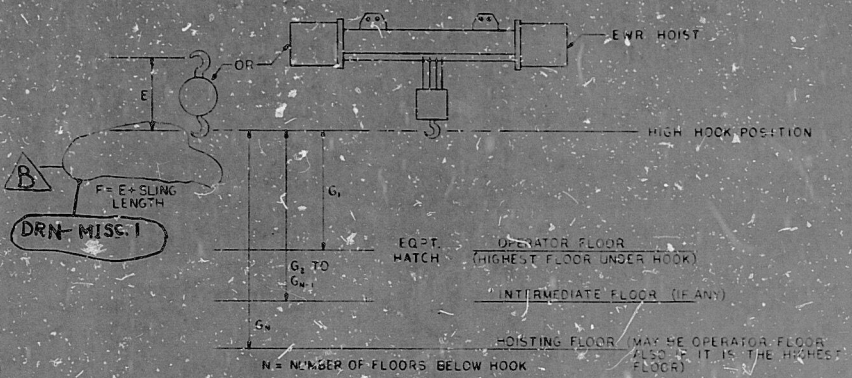
SINGLE GIRDER CRANES



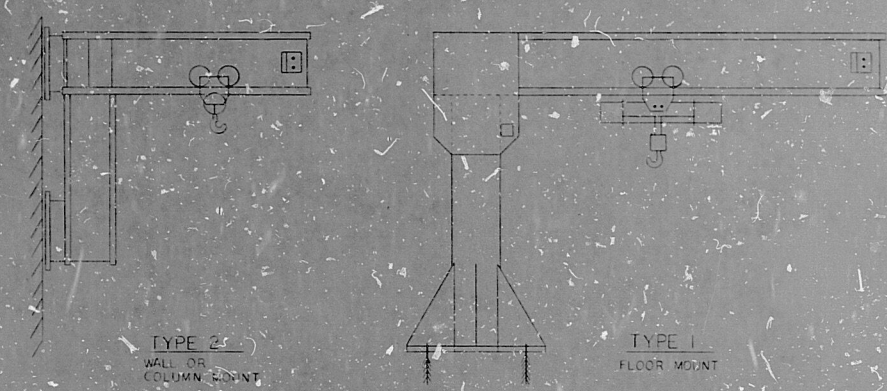
TROLLEY BEAMS AND PATENTED TRACK SYSTEMS SIDE VIEW



GENERAL LIFT INFORMATION



JIB CRANES



DRN-MISC.1

TI
APERTURE
CARD

DRAWING RELEASE RECORD				PROJECT NUMBER		MISCELLANEOUS MATERIAL HANDLING DATA		SARGENT & LUNDY ENGINEERS CHICAGO	
DATE	BY	REASON	REMARKS	PROJECT NUMBER	DATE	PROJECT NUMBER	DATE	DRAWING NO.	REV.
				4351	10-15	4351	10-15	M-516	
				4352	10-15	4352	10-15		
				4353	10-15	4353	10-15		
				4354	10-15	4354	10-15		

COMMONWEALTH EDISON CO. CHICAGO, ILLINOIS

SHEET 3 OF 5

PDR RIDS

8403080359

