

18

10

10

10

10

10

17

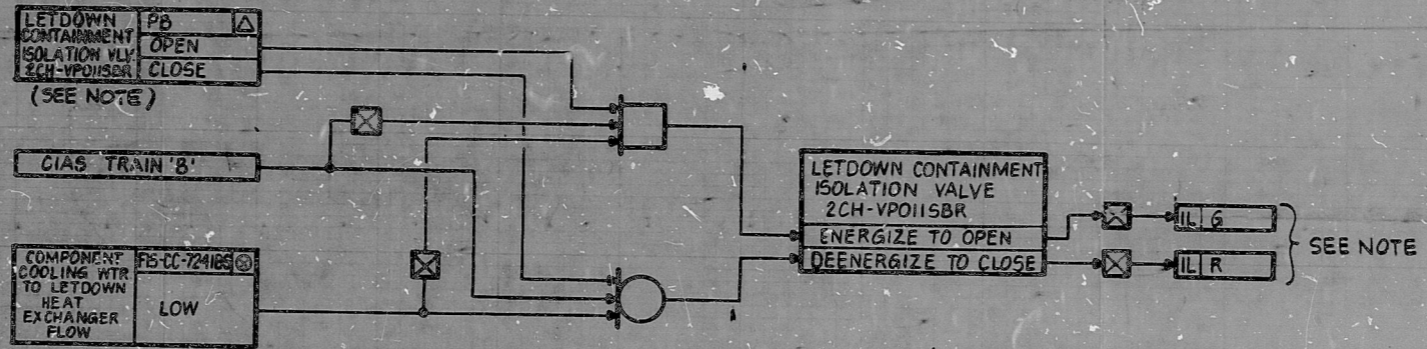
11

8.5

8.5

11

17



NOTE:
 PB & IL DUPLICATED ON REMOTE SHUTDOWN PANEL
 AND OPERATION IS DETERMINED BY POSITION OF
 TRANSFER SWITCH.

PRC
 APERTURE
 CARD

NUCLEAR SAFETY RELATED WPPSS QUALITY CLASS I

| | | | | | | | |
|------|------|----|----------|--|--|--|--|
| 5 | | | | | | | |
| 4 | | | | | | | |
| 3 | | | | | | | |
| 2 | | | | | | | |
| 1 | | | | | | | |
| REV. | DATE | BY | APPROVED | EBASCO SERVICES INCORPORATED DIV. I&C OR. BM CH. T. DENNEHY DATE JUN 24, 1982 | | WASHINGTON PUBLIC POWER SUPPLY SYSTEM NUCLEAR PROJECTS NO. 3 & 5 INSTRUMENT SCHEMATIC-LOGIC DIAGRAM LETDOWN ISOLATION SYSTEM | |
| | | | | | | WPPSS-3240 D-6080 SHEET 701C | |

RIDS

8303150233

