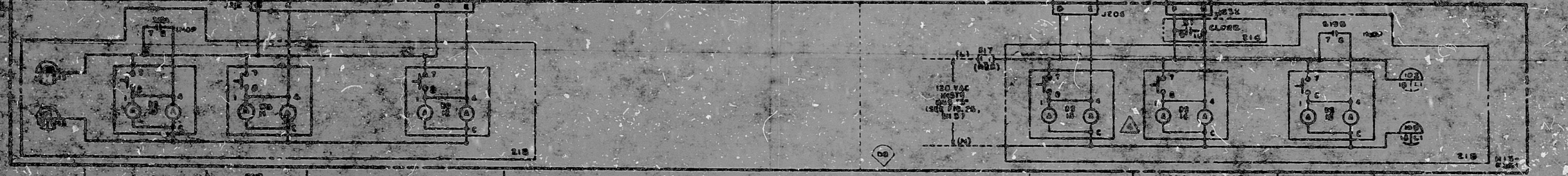
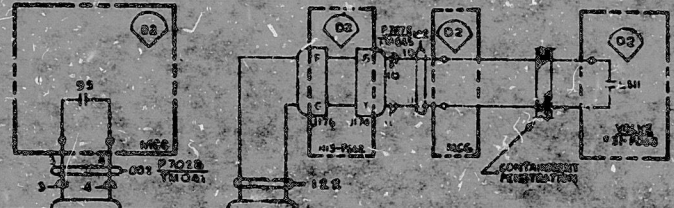
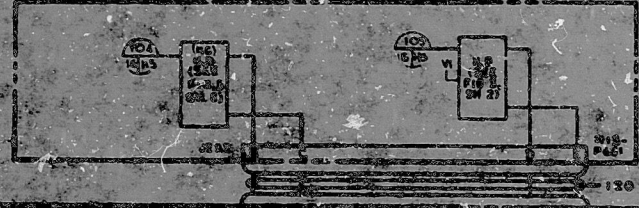
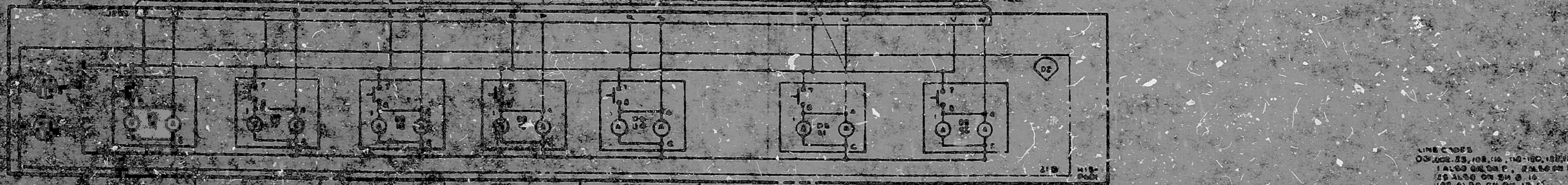
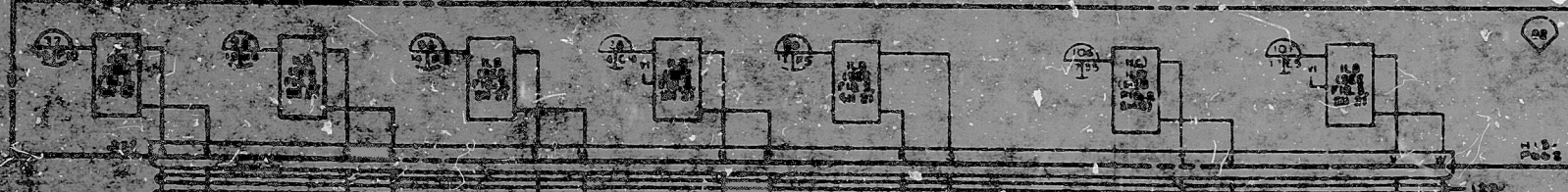


RCIC SYSTEM RECALIBRATION INITIATED DIV 1  
RCIC TURBINE TRIPPED  
RCIC ATM IN CALIBRATION OR CROSS FAILURE DIV 1  
RCIC ATM OUT OF PHASE OR POWER LOSS DIV 1  
RCIC (123 VOLT) LOGIC POWER FAILURE DIV 1  
RCIC 120 VOLT OVERLOAD OR POWER LOSS DIV 1  
RCIC MOV IN TEST DIV 1  
RCIC VALVE POSE CONTROL SWITCH IN CLOSE POSITION OR VALVE NOT FULLY OPEN  
RCIC VALVE POSE CONTROL SWITCH IN OPEN POSITION OR VALVE NOT FULLY OPEN



RCIC MOV IN TEST DIV 2  
RCIC VALVE POSE CONTROL SWITCH IN CLOSE POSITION OR VALVE NOT FULLY OPEN  
RCIC VALVE POSE CONTROL SWITCH IN OPEN POSITION OR VALVE NOT FULLY OPEN



RCIC VALVE POSE CONTROL SWITCH IN CLOSE POSITION OR VALVE NOT FULLY OPEN  
RCIC VALVE POSE CONTROL SWITCH IN OPEN POSITION OR VALVE NOT FULLY OPEN  
RCIC SYSTEM RECALIBRATION INITIATED DIV 1

LINE 3005  
ON LINES 23, 108, 110, 116, 120, 121, 122  
123 ALSO ON SW 8, 124, 125, 126, 127  
128 ALSO ON SW 9, 129, 130, 131, 132, 133, 134, 135, 136, 137, 138, 139, 140, 141, 142, 143, 144, 145, 146, 147, 148, 149, 150, 151, 152, 153, 154, 155, 156, 157, 158, 159, 160, 161, 162, 163, 164, 165, 166, 167, 168, 169, 170, 171, 172, 173, 174, 175, 176, 177, 178, 179, 180, 181, 182, 183, 184, 185, 186, 187, 188, 189, 190, 191, 192, 193, 194, 195, 196, 197, 198, 199, 200



PDR RIDS

8402240242

