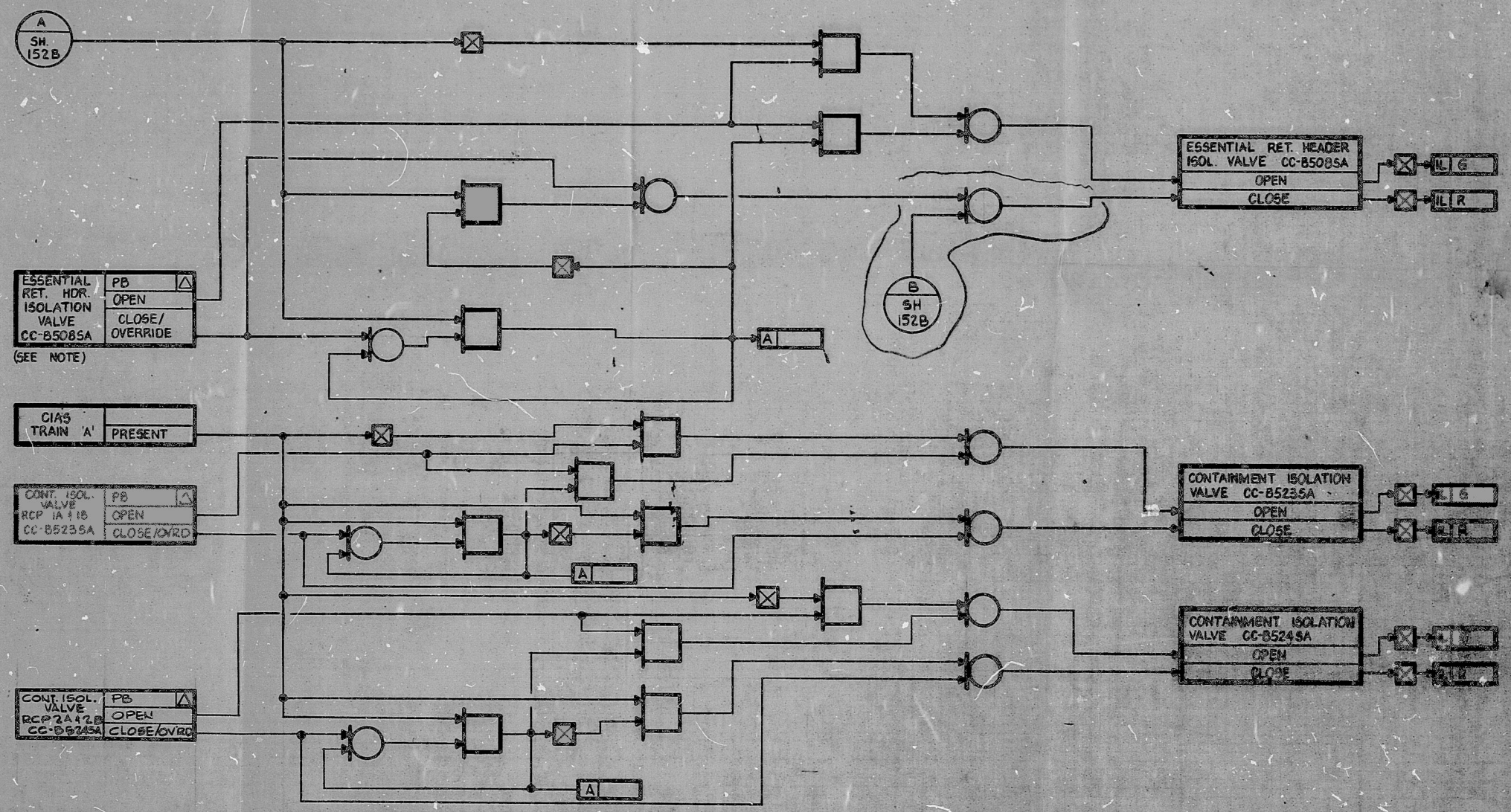


17"
11"
8.5"
11"
17"

17"
11"
8.5"
11"
17"



ESSENTIAL RET. HDR. ISOLATION VALVE CC-B5085A
 (SEE NOTE)

CIAS TRAIN 'A' PRESENT

CONT. ISOL. VALVE RCP 1A 11B CC-B5235A

CONT. ISOL. VALVE RCP 2A 12B CC-B5245A

NOTE:
 P.B. IS DUPLICATED ON REMOTE SHUTDOWN PANEL & OPERATION IS DETERMINED BY POSITION OF TRANSFER SWITCH.

ESSENTIAL RET. HDR. ISOL. VALVE CC-B5085A
 OPEN
 CLOSE

CONTAINMENT ISOLATION VALVE CC-B5235A
 OPEN
 CLOSE

CONTAINMENT ISOLATION VALVE CC-B5245A
 OPEN
 CLOSE

FOR ORIGINAL

PRC APERTURE CARD

5				EBASCO SERVICES INCORPORATED		WASHINGTON PUBLIC POWER SUPPLY SYSTEM		WPPSS-3125	
4				DIV. INSTRUMENTATION DR. BM		NUCLEAR PROJECT NO. 978		Deline	
3				CH. A. JAGO		INSTRUMENT SCHEMATIC LOGIC DIAGRAM		100-100	
2				DATE FEB. 8, 1979		CCW ESSENTIAL HDR. ISOLATION VALVE			
1				7/29/82					
REV.	DATE	BY	APPROVED	DATE	FEB. 8, 1979				

RIDS

8303110535

