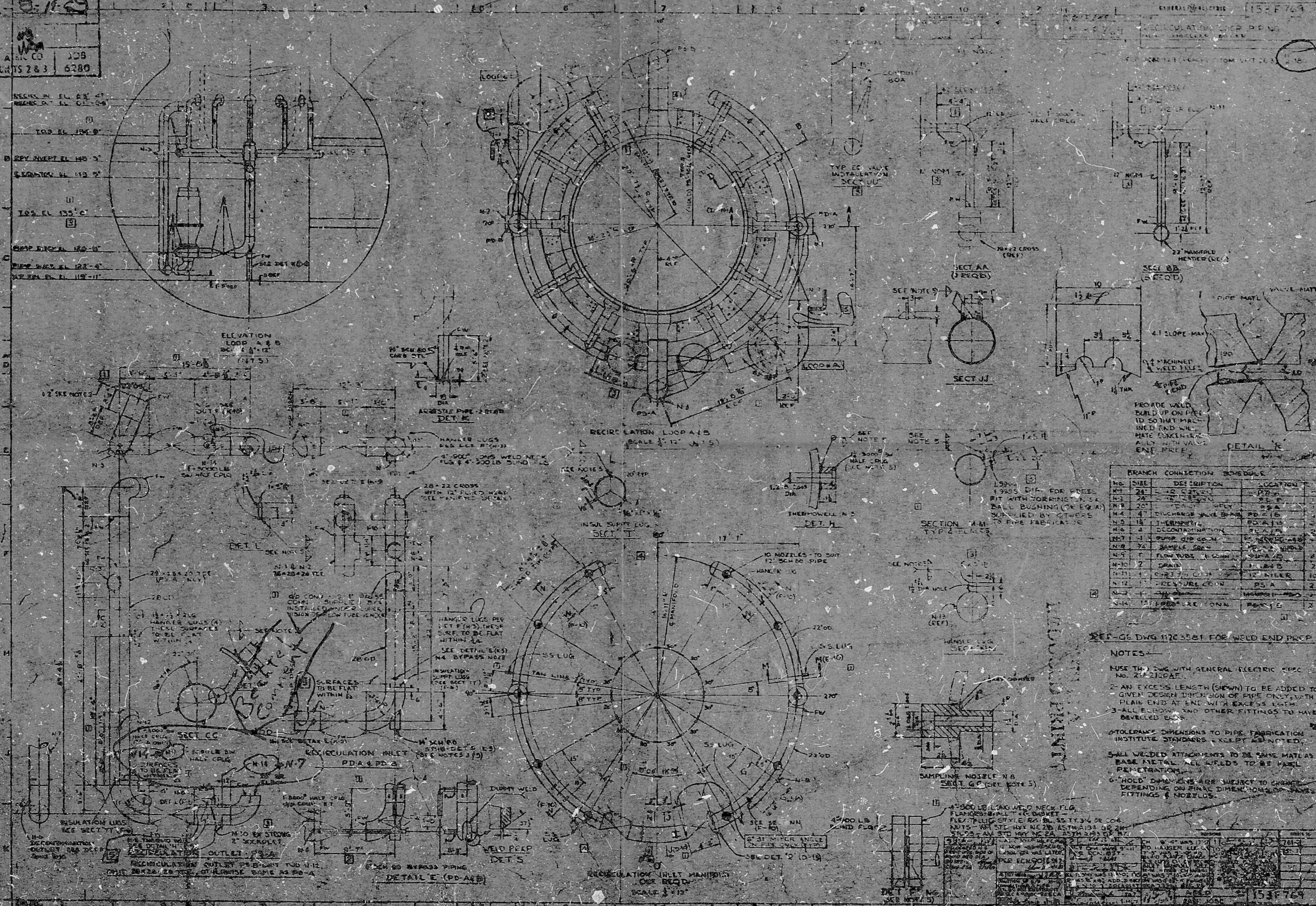


BECHTEL
 VENDORS DRAWING REVIEW
 PHILADELPHIA, PA. JOB NO. 6280
 REACH BOTTOM UNITS 2 & 3

POOR ORIGINAL M-1-E-1-1

TI
 APERTURE
 CARD
 AUG 27 1969



NO.	SHEET	DESCRIPTION	SCHEDULE
1	1	28" DIA. PIPE	304
2	2	28" DIA. PIPE	304
3	3	28" DIA. PIPE	304
4	4	28" DIA. PIPE	304
5	5	28" DIA. PIPE	304
6	6	28" DIA. PIPE	304
7	7	28" DIA. PIPE	304
8	8	28" DIA. PIPE	304
9	9	28" DIA. PIPE	304
10	10	28" DIA. PIPE	304
11	11	28" DIA. PIPE	304
12	12	28" DIA. PIPE	304
13	13	28" DIA. PIPE	304
14	14	28" DIA. PIPE	304
15	15	28" DIA. PIPE	304
16	16	28" DIA. PIPE	304
17	17	28" DIA. PIPE	304
18	18	28" DIA. PIPE	304
19	19	28" DIA. PIPE	304
20	20	28" DIA. PIPE	304
21	21	28" DIA. PIPE	304
22	22	28" DIA. PIPE	304
23	23	28" DIA. PIPE	304
24	24	28" DIA. PIPE	304
25	25	28" DIA. PIPE	304
26	26	28" DIA. PIPE	304
27	27	28" DIA. PIPE	304
28	28	28" DIA. PIPE	304
29	29	28" DIA. PIPE	304
30	30	28" DIA. PIPE	304
31	31	28" DIA. PIPE	304
32	32	28" DIA. PIPE	304
33	33	28" DIA. PIPE	304
34	34	28" DIA. PIPE	304
35	35	28" DIA. PIPE	304
36	36	28" DIA. PIPE	304
37	37	28" DIA. PIPE	304
38	38	28" DIA. PIPE	304
39	39	28" DIA. PIPE	304
40	40	28" DIA. PIPE	304
41	41	28" DIA. PIPE	304
42	42	28" DIA. PIPE	304
43	43	28" DIA. PIPE	304
44	44	28" DIA. PIPE	304
45	45	28" DIA. PIPE	304
46	46	28" DIA. PIPE	304
47	47	28" DIA. PIPE	304
48	48	28" DIA. PIPE	304
49	49	28" DIA. PIPE	304
50	50	28" DIA. PIPE	304

NOTES
 1. USE THE 1/2" DIA. WITH GENERAL ELECTRIC SPEC. NO. 24-21-04E.
 2. AN EXCESS LENGTH (SHOWN) TO BE ADDED TO GIVEN DESIGN DIMENSION OF PIPE ONLY WITH FLARE END AT END WITH EXCESS LENGTH.
 3. ALL FITTINGS AND OTHER FITTINGS TO HAVE DEVELOPED END.
 4. TOLERANCE DIMENSIONS TO PIPE FABRICATOR INSTITUTE STANDARDS & KEPT AS NOTED.
 5. ALL WELDED ATTACHMENTS TO BE TANK METAL AS BASE METAL. ALL WELDS TO BE FULL PENETRATION.
 6. HOLD DIMENSIONS ARE SUBJECT TO CHANGE DEPENDING ON FINAL DIMENSIONS OF TANKS, FITTINGS & NOZZLES.

UNCONTROLLED PRINT
 8402150053

PDR

8402150053

