

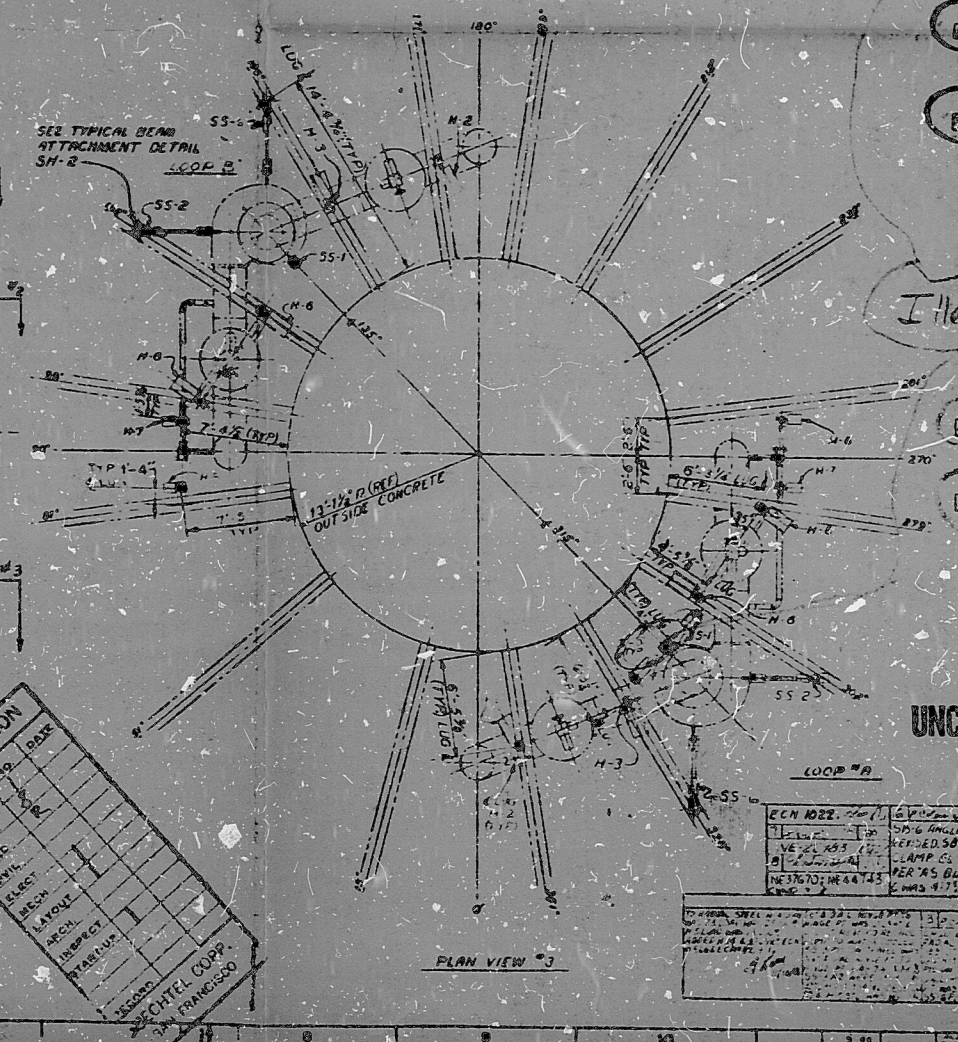
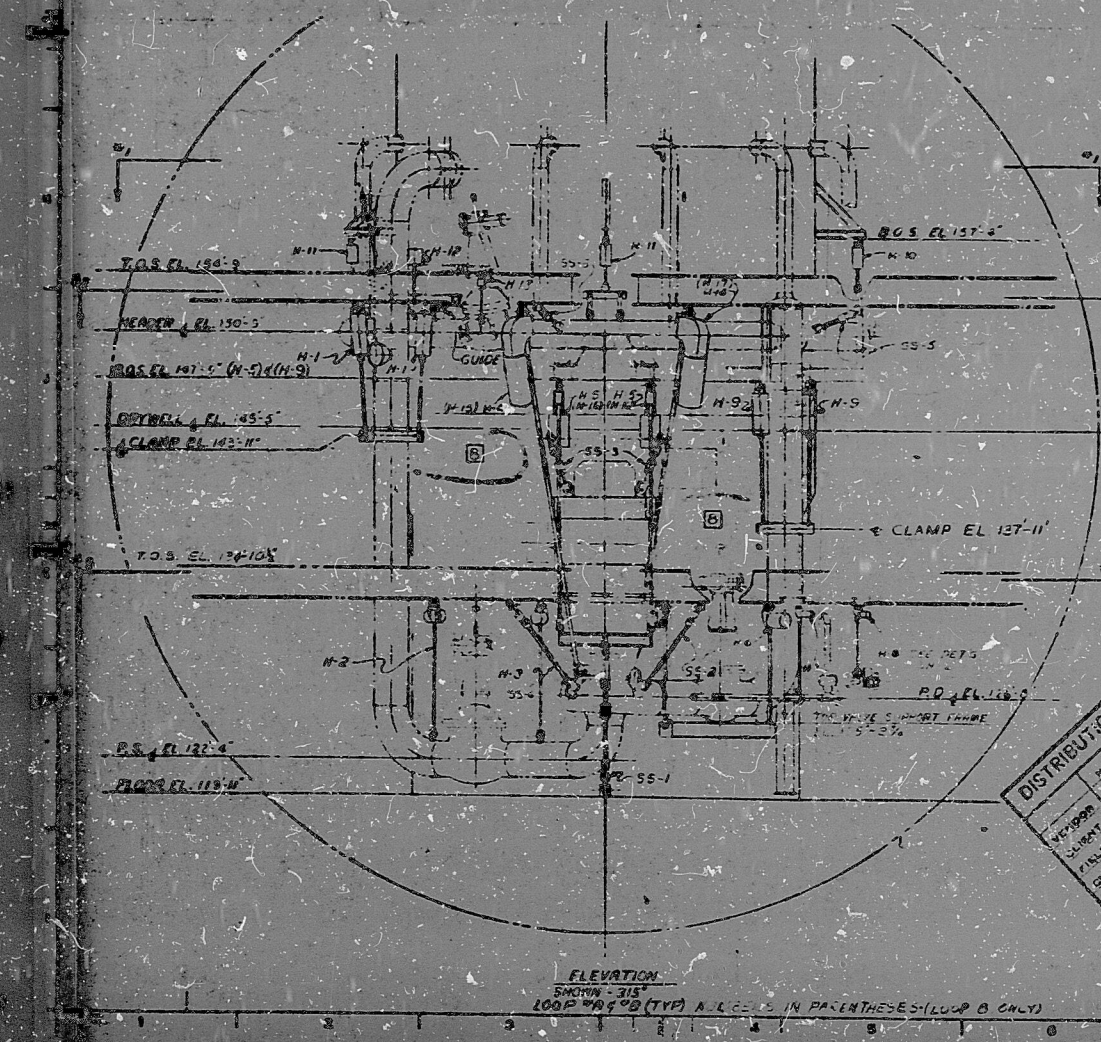
RECIRC LOOP SCHEDULE

HANGER	LOAD (LBS)	TRAVEL	SPRING TRAVEL	SPRING TRAVEL
N/A	COLD	HOT	COLD	HOT
N-1	11,350	330	2 1/2"	3 1/2"
N-2	11,000	330	2 1/2"	3 1/2"
N-3	11,000	330	2 1/2"	3 1/2"
N-4	21,550	330	2 1/2"	3 1/2"
N-5	18,570	330	2 1/2"	3 1/2"
N-6	9,000	330	2 1/2"	3 1/2"
N-7	863	330	2 1/2"	3 1/2"
N-8	807	330	2 1/2"	3 1/2"
N-9	11,400	330	2 1/2"	3 1/2"
N-10	5,000	330	2 1/2"	3 1/2"
N-11	3,000	330	2 1/2"	3 1/2"
N-12	11,000	330	2 1/2"	3 1/2"
N-13	2,000	330	2 1/2"	3 1/2"
N-14	22,855	330	2 1/2"	3 1/2"
N-15	16,985	330	2 1/2"	3 1/2"
N-16	20,355	330	2 1/2"	3 1/2"

SS	LOAD RESISTING FORCE	MIN CYL	PIS FOR	TRAVEL	SPRING TRAVEL	SPRING TRAVEL
SS-1	COLD	HOT	COLD	HOT	COLD	HOT
SS-1	0	30,000	5"	1 1/2"	2 1/2"	3 1/2"
SS-2	0	30,000	5"	1 1/2"	2 1/2"	3 1/2"
SS-3	0	30,000	5"	1 1/2"	2 1/2"	3 1/2"
SS-4	0	30,000	5"	1 1/2"	2 1/2"	3 1/2"
SS-5	0	20,000	5"	1 1/2"	2 1/2"	3 1/2"
SS-6	0	20,000	5"	1 1/2"	2 1/2"	3 1/2"

POOR ORIGINAL

SB	LOAD (LBS)	SPRING TRAVEL	SPRING TRAVEL	
SB-1	COLD	HOT	COLD	HOT
SB-1	0	30,000	5"	1 1/2"
SB-2	0	30,000	5"	1 1/2"
SB-3	0	30,000	5"	1 1/2"
SB-4	0	30,000	5"	1 1/2"
SB-5	0	20,000	5"	1 1/2"
SB-6	0	20,000	5"	1 1/2"



REFERENCE DRAWINGS

- RECIRC LOOP PIPING APPURT
- RECIRC PUMP SUSPENSION LUGS
- RECIRC LOOP PIPE RESTRAINTS

UNCONTROLLED PRINT

NO.	DATE	BY	CHKD	APP'D
1	11/11/50	BP		

DISTRIBUTION	NO.	DATE
WAGON		
TRUCK		
TRAILER		
RAIL		
BOAT		
AIR		
SEA		
LAND		
AIRPORT		
STATION		
OFFICE		
WAREHOUSE		

BECHTEL JOB # SAN FRANCISCO 628

THEORY'S DRAWING REVIEW

APPROVED BY: BP Date: 11/11/50

M-1-E-510

PDR

840215DD50

