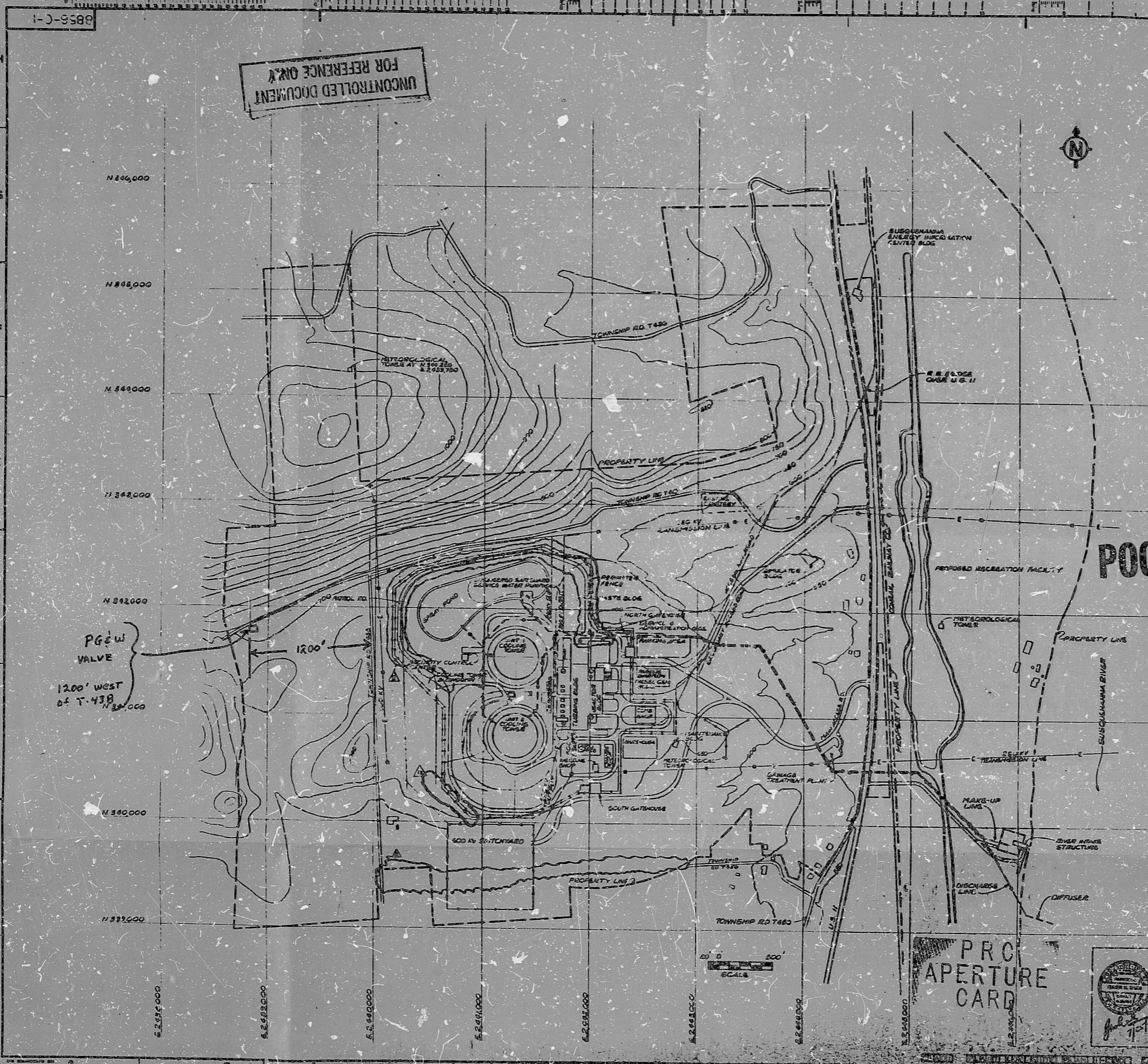
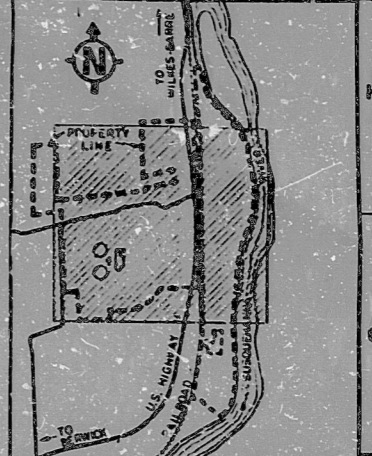


FIGURE 2

SIZE E



UNCONTROLLED DOCUMENT
FOR REFERENCE ONLY



KEY PLAN
SCALE 1"=2000'

NOTES

- 1 THE GRID INDICATED CORRESPONDS TO THE PENNSYLVANIA COORDINATE SYSTEM.
- 2 CONTOUR DATUM IS MEAN SEA LEVEL.
- 3 ADJACENT PIPE LINES WILL BE LAID IN COMMON TRENCHES AS FAR AS POSSIBLE BUT THIS IS NOT SURE IN CASES FOR CLARITY.
- 4 NO SUBCONTRACTOR'S WORK OPERATIONS SHALL BE ALLOWED IN THE VICINITY OF THE CEMETERY.
- 5 THE CONTRACTOR SHALL MAINTAIN ACCESS TO THE CEMETERY AT ALL TIMES.
- 6 THE SUBCONTRACTOR'S PERSONNEL SHALL NOT ENTER THE CEMETERY AT ANY TIME DURING THE COURSE OF WORK.
- 7 SIZE AND LOCATION OF SPOILS AREA AS DIRECTED BY CONTRACTOR.
- 8 REFER TO DRAWINGS FOR SUBCONTRACTOR'S C-78 SEE DWG. NO. 8856-C-18.

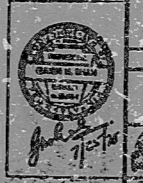
POOR ORIGINAL

REFERENCE DOWNS

SECTION	PL. NO.
C-78	8856-C-18

NO.	REVISION	DATE	BY	CHKD.
1	ISSUED FOR CONSTRUCTION	11/17/78	J. J. [Signature]	[Signature]
2	REVISED FOR MISC.	11/17/78	[Signature]	[Signature]
3	REVISED FOR MISC.	11/17/78	[Signature]	[Signature]
4	REVISED FOR MISC.	11/17/78	[Signature]	[Signature]
5	REVISED FOR MISC.	11/17/78	[Signature]	[Signature]
6	REVISED FOR MISC.	11/17/78	[Signature]	[Signature]
7	REVISED FOR MISC.	11/17/78	[Signature]	[Signature]
8	REVISED FOR MISC.	11/17/78	[Signature]	[Signature]
9	REVISED FOR MISC.	11/17/78	[Signature]	[Signature]
10	REVISED FOR MISC.	11/17/78	[Signature]	[Signature]
11	REVISED FOR MISC.	11/17/78	[Signature]	[Signature]
12	REVISED FOR MISC.	11/17/78	[Signature]	[Signature]
13	REVISED FOR MISC.	11/17/78	[Signature]	[Signature]
14	REVISED FOR MISC.	11/17/78	[Signature]	[Signature]
15	REVISED FOR MISC.	11/17/78	[Signature]	[Signature]
16	REVISED FOR MISC.	11/17/78	[Signature]	[Signature]
17	REVISED FOR MISC.	11/17/78	[Signature]	[Signature]
18	REVISED FOR MISC.	11/17/78	[Signature]	[Signature]
19	REVISED FOR MISC.	11/17/78	[Signature]	[Signature]
20	REVISED FOR MISC.	11/17/78	[Signature]	[Signature]

PRO APERTURE CARD



PENNSYLVANIA POWER & LIGHT COMPANY
GENERAL HEADQUARTERS
1000 PENNSYLVANIA AVENUE, PHILADELPHIA, PA 19107

REVISIONS - SEE REVISIONS

SITE & YARD DEVELOPMENT
PLANT LOCATION
SITE PLAN

NO.	DATE	BY	CHKD.
8856	C-1	[Signature]	[Signature]

E-105151

I certify that the maps contained on this drawing were made in the field and prepared in accordance with the laws of the State of Pennsylvania and that it is a correct representation of the same as shown to me.

DATE: 11/17/78

BY: [Signature]

8303040412

RIDS

8303040412

