

ICW INSTRUMENT RACK 'A' (E-1) (HPD)
SEE ZONE (E-8)

ICWA-1100	PIT-100 (HP)	ICWA-18100	FI-102 A
ICWA-1101	PIT-100 (LP)	ICWA-18101	LIT-702 (A)
ICWA-1102	PIT-300	ICWA-18102	FI-702 B
ICWA-1103	PIT-300 (LP)	ICWA-18103	FI-1
ICWA-1104	PIT-302	ICWA-18104	SP-100
ICWA-1105	PIT-302 (LP)	ICWA-18105	SOV-100 (INLET)
ICWA-1106	FI-302 A	ICWA-18106	SOV-100 (OUTLET)
ICWA-1107	PIT-103 (HP)	ICWA-18107	SOV-101 SEE NOTE 2
ICWA-1108	FI-203	ICWA-18108	FI-103
ICWA-1109	PIT-301	ICWA-18109	SOV-800 (A.O.)
ICWA-1110	FI-301	ICWA-18110	SOV-800 (A.C.)
ICWA-1111	PIT-304	ICWA-18111	SOV-801
ICWA-1112	FI-304	ICWA-18112	SOV-801 (A.C.)
ICWA-1113	PIT-305	ICWA-18113	SOV-301
ICWA-1114	FI-305	ICWA-18114	SOV-301 (A.C.)
ICWA-1115	PIT-306	ICWA-18115	SOV-302 (A.O.)
ICWA-1116	FI-306	ICWA-18116	SOV-302 (A.C.)
ICWA-1117	LIT-704 (HP)		

ICW BOTTOMS INSTRUMENT RACK (E-1) (HPD)
SEE ZONE (E-8)

BOT-1	PIT-515	BOT-151 241	SOV-815 (A.C.)
BOT-2	FI-515	BOT-151	SOV-814 (A.C.)
BOT-3 106	LIT-11 (A.C.)	BOT-151	SOV-814 (A.C.)
BOT-4 106	FI-100	BOT-151	SP-815 (A.C.)
BOT-5 106	FI-111	BOT-151	SOV-815 (A.C.)
BOT-6 240	SOV-810 (A.C.)	BOT-151	SOV-815 (A.C.)
BOT-7 240	SOV-810 (A.C.)	BOT-151	SOV-815 (A.C.)
BOT-8	SOV-811 (A.C.)	BOT-151	SOV-817 (A.C.)
BOT-9	SOV-811 (A.C.)	BOT-151	SOV-817 (A.C.)
BOT-10	SOV-812 (A.C.)	BOT-151	SOV-818 (A.C.)
BOT-11	SOV-812 (A.C.)	BOT-151	SOV-818 (A.C.)
BOT-12 241	SOV-813 (A.C.)		

INST. RACK RA-12
SEE ZONE (E-8)

MATE-1100 LT-WM019 D, LS-WM019 B, LS-WM019 C

BLANCHARD, CT. WM 019 B

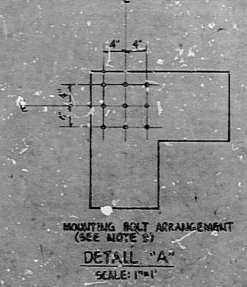
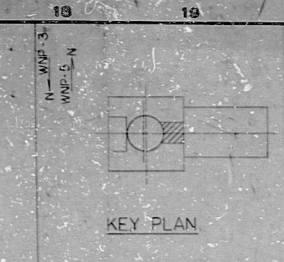
INST. RACK RA-50
SEE ZONE (E-8)

RACK-5100A FS-050000 (HP), FS-050000 (LP)

RACK-5100B FS-050000 (HP), FS-050000 (LP)

RACK-5100C LT-050000 (HP), LT-050000 (LP)

RACK-5100D LT-050000 (HP), LT-050000 (LP)



APPROVED FOR CONSTRUCTION

1. ALL DIMENSIONS UNLESS OTHERWISE SPECIFIED ARE IN INCHES.

2. ALL DIMENSIONS UNLESS OTHERWISE SPECIFIED ARE IN FEET AND INCHES.

3. ALL DIMENSIONS UNLESS OTHERWISE SPECIFIED ARE IN METERS.

4. ALL DIMENSIONS UNLESS OTHERWISE SPECIFIED ARE IN MILLIMETERS.

PRO APERTURE CARD

REVISIONS

1	REVISED	DATE
2	REVISED	DATE
3	REVISED	DATE
4	REVISED	DATE
5	REVISED	DATE

WMP-3
WMP-5

22
17
11
5.8

8.5
11
17
22

RIDS

8303030278

