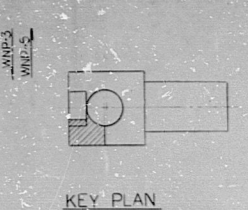
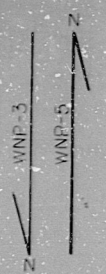
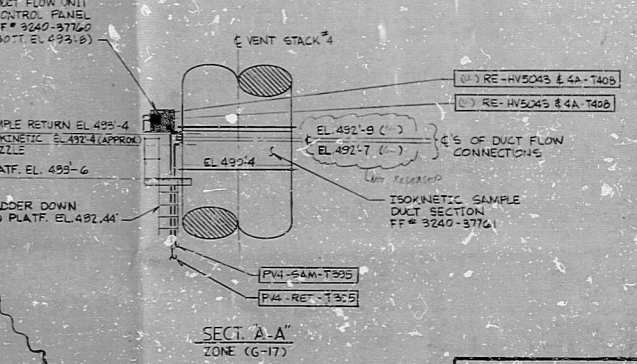
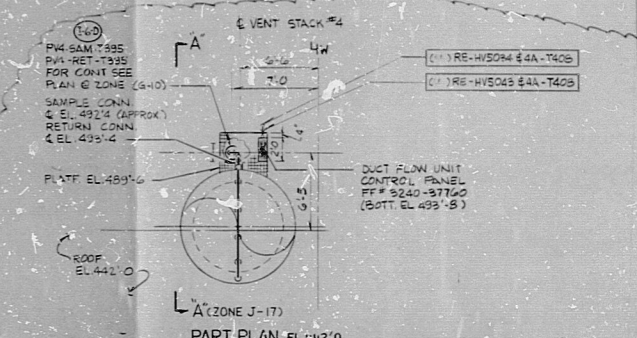


WPPS-3240-G 6506



- INSTRUMENT RACK IN RA-45**
- RA45-IT331 PDT-HV5092A, PDT-HV5092A, PDT-HV5097, PDT-HV5098 (RP)
 - RA45-IT332 PDT-HV5098 (HP), PDT-HV5098A (LP)
 - RA45-IT333 PDT-HV5095, PDT-HV5097, PDT-HV5099, PDT-HV5093 (LP)
- INSTRUMENT RACK IN RA-6A**
- RA6A-IT333 PDT-HV5092AS, PDT-HV5092AS, PDT-HV5093AS (HP)
 - RA6A-IT333 PDT-HV5095AS, PDT-HV5096AS, PDT-HV5097AS (LP)
 - RA6A-IT334 PDT-HV5092AS, PDT-HV5096AS, PDT-HV5093AS (LP)
 - RA6A-IT334 PDT-HV5092AS, PDT-HV5096AS, PDT-HV5097AS (LP)



APPROVED FOR CONSTRUCTION

NOTES:
1. FOR GENERAL NOTES, SYMBOLS & REFERENCES, SEE DWG. NO. 3240-001

WPPS QUALITY CLASS I & II

DWG. CONTAINS:
CONTRACT No. 227
CONTRACT No.

APERTURE CARD COPY TO POOR ORIGINAL

NUCLEAR SAFETY RELATED

WASHINGTON PUBLIC POWER SUPPLY SYSTEM
NUCLEAR PROJECTS NO. 335
100-1800 HW INSTALLATION
100-1800 HW INSTALLATION
REACTOR AUXILIARY BLDG. EL. 412.50 &
FUEL HANDLING BLDG. EL. 425.00
HVAC SYSTEM- INST. LOCATION APPROX. 34.8

REVISIONS

NO.	DATE	DESCRIPTION
1	10-21-61	ISSUED FOR CONSTRUCTION
2	11-15-61	REVISED (C-17) PART PLAN AND INFO REQ'D TO COMPLETE APPROX. (E-17) SECT. (E-40) FROM (C-19) A/C. DELETED (G-9) SAFETY RELATED SYMBOL FROM EQUIP.

DESIGNED BY: [Signature]
CHECKED BY: [Signature]
DATE: 11-15-61

RIDS

8303930227040

