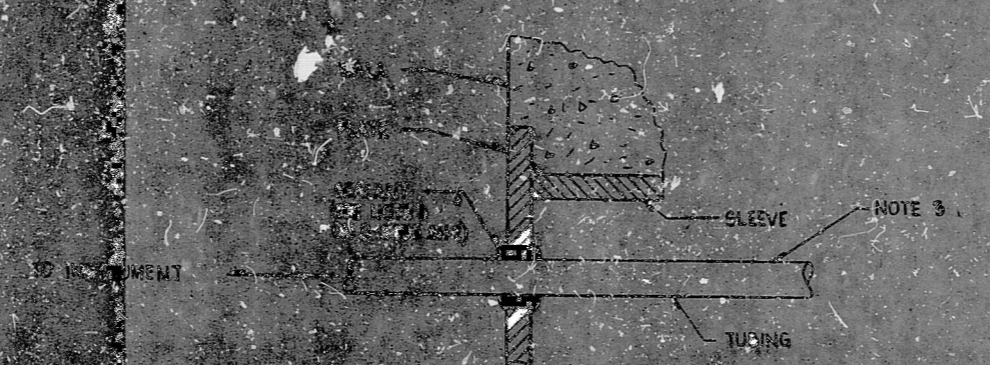


- NOTES:
1. ALL DIMENSIONS ARE TO CENTER UNLESS OTHERWISE SPECIFIED.
  2. INSURE ALL PENETRATIONS ARE PROTECTED AGAINST COLLISION AND VIBRATION.
  3. ALL DIMENSIONS ARE TO CENTER UNLESS OTHERWISE SPECIFIED.

ALTERNATE PENETRATION SCHEME



SECTION A-A  
 PENETRATION CLOSURE DETAIL  
 (SEE NOTE 3 FOR DIMENSIONS)

EXISTING TUBING  
 AND CLOSURE PENETRATION DETAILS

THIS DOCUMENT CONTAINS INFORMATION RELATIVE TO THE ATOMIC ENERGY ACT OF 1954

NUCLEAR SAFETY RELATIONSHIP

NO.	DATE	BY	REVISION
1	1-15-50	PP	REVISED
2	1-16-50	PP	REVISED
3	1-18-50	PP	REVISED
4	1-18-50	PP	REVISED

APPROVED  
 DATE APR 15, 1950

WARNING: THIS DOCUMENT CONTAINS INFORMATION RELATIVE TO THE ATOMIC ENERGY ACT OF 1954

11  
 8.5  
 11  
 8.5  
 11  
 17



RIDS

8303010167

