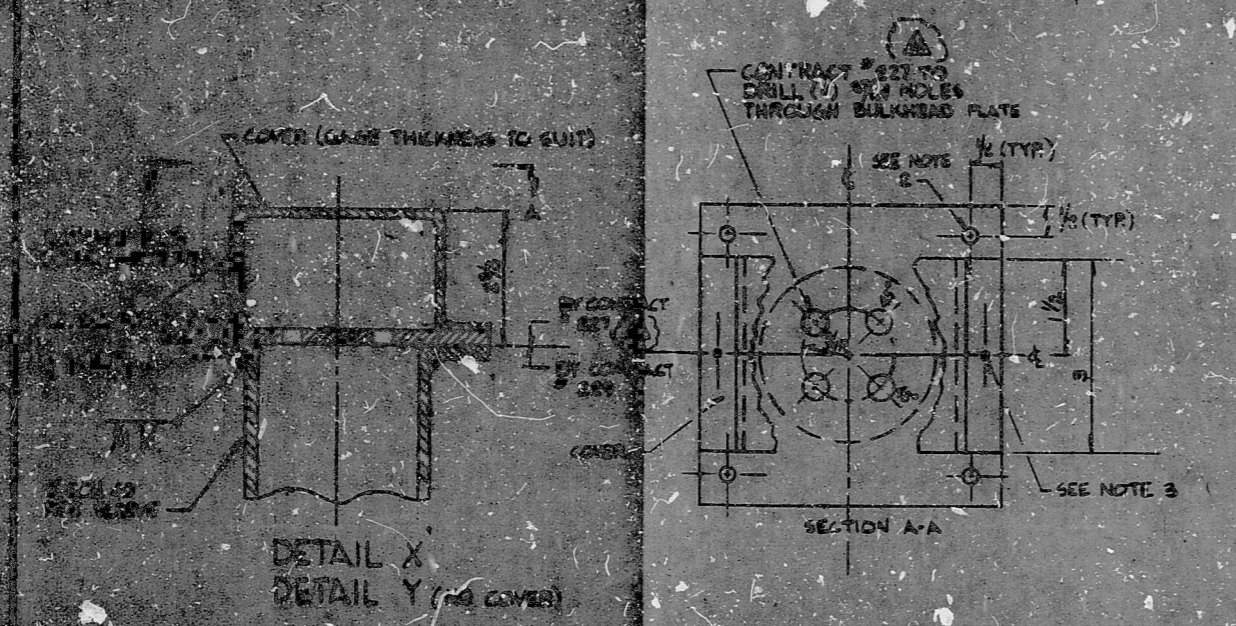
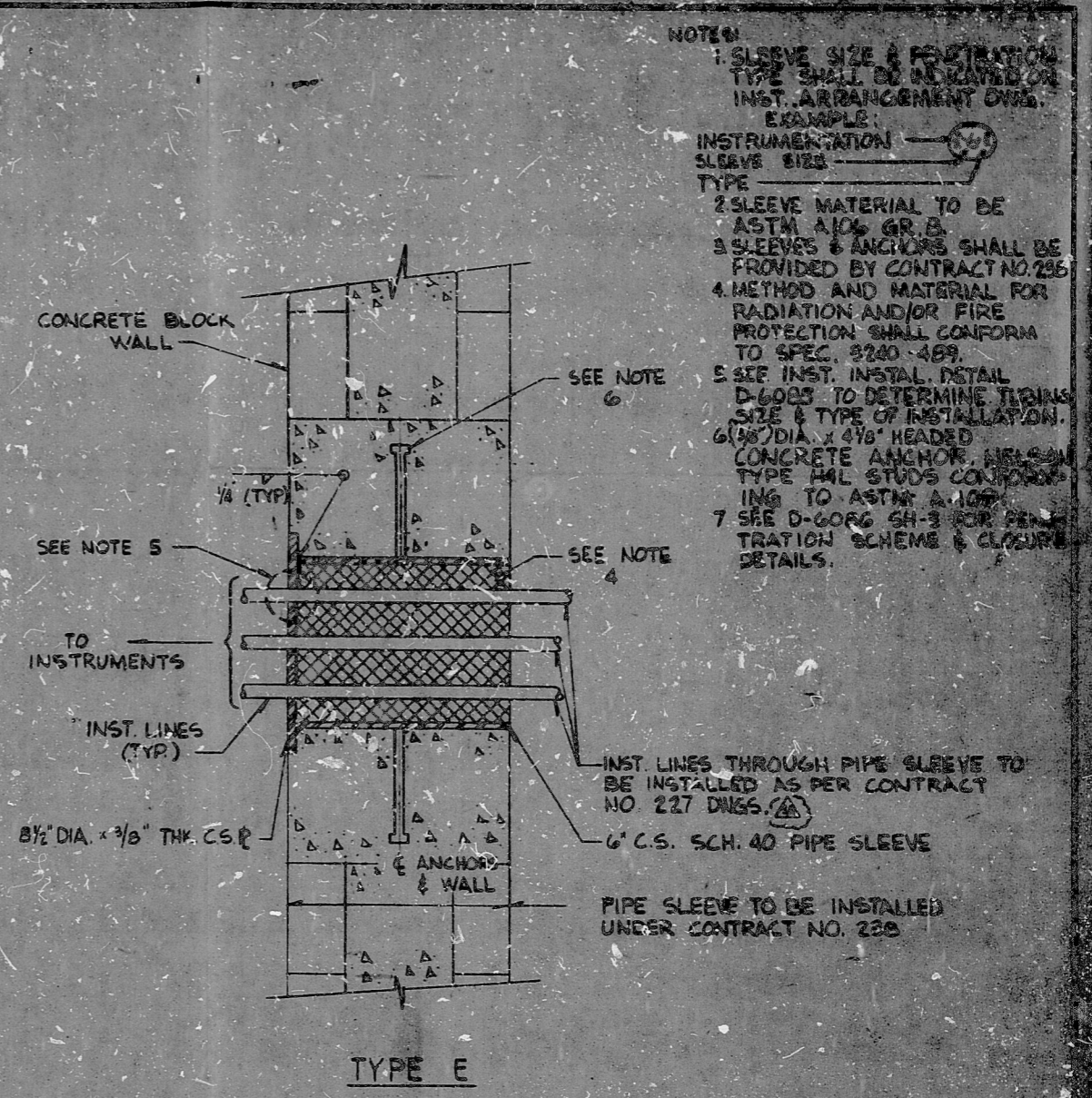



TYPE F



DETAIL X
DETAIL Y (NO COVER)



TYPE E

- NOTES:
1. SLEEVE SIZE & PENETRATION TYPE SHALL BE INDICATED ON INST. ARRANGEMENT DNGS. EXAMPLE: INSTRUMENTATION SLEEVE SIZE:  TYPE
 2. SLEEVE MATERIAL TO BE ASTM A106 GR. B.
 3. SLEEVES & ANCHORS SHALL BE PROVIDED BY CONTRACT NO. 235.
 4. METHOD AND MATERIAL FOR RADIATION AND/OR FIRE PROTECTION SHALL CONFORM TO SPEC. 3240-489.
 5. SEE INST. INSTALL. DETAIL D-6003 TO DETERMINE TUBING SIZE & TYPE OF INSTALLATION.
 6. 3/8" DIA. x 4 1/8" HEADED CONCRETE ANCHOR, WELDED TYPE W/AL STUDS CONFORMING TO ASTM A-106.
 7. SEE D-6003 SH-3 FOR PENETRATION SCHEM & CLOSURE DETAILS.

ALL MATERIAL TO BE ASTM A-106 GR. B.
 ALL HOLES TO BE DRILLED THROUGH HOLES AND
 THE SLEEVE PLATE BY 1/2" DIA. 1/2" SCREWS.
 ALL HOLES TO BE DRILLED AND TAPPED TO
 SUIT. (CONTRACT NO. 235)
 ALL HOLES TO BE DRILLED AND TAPPED TO
 SUIT. (CONTRACT NO. 235)
 ALL HOLES TO BE DRILLED AND TAPPED TO
 SUIT. (CONTRACT NO. 235)
 ALL HOLES TO BE DRILLED AND TAPPED TO
 SUIT. (CONTRACT NO. 235)
 ALL HOLES TO BE DRILLED AND TAPPED TO
 SUIT. (CONTRACT NO. 235)

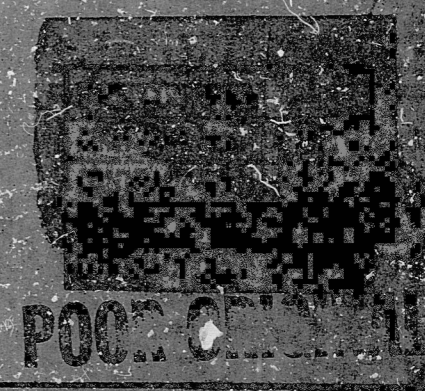
REV'S INDICATES
 OMITTED REFERENCE
 TO DCN-1C-1

| REV. | DATE | BY | APPROVED |
|------|----------|----|----------|
| 1 | 10-2-81 | PP | |
| 2 | 2-5-81 | PP | |
| 3 | 11-19-80 | PP | |

EBASCO SERVICES INCORPORATED
 DIV. WASHINGTON PUBLIC POWER
 CH. AJUSO
 DATE JUL 30 1980
 APPROVED [Signature]
 DATE JUL 30 1980

WASHINGTON PUBLIC POWER
 SUPPLY SYSTEM
 NUCLEAR PROJECT NO. 345
 INSTRUMENT WALL AND FLOOR
 PENETRATION DETAILS

PRO APERTURE
 CARD



WPPSS QUALITY CLAS 3.0

11
9.8
8.5
11
17

11
9.8
8.5
11
17

RIDS

83039/0/65

