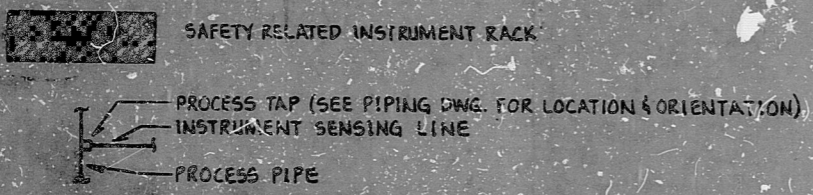
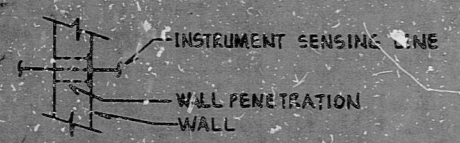


- ☐ LOCALLY MOUNTED INSTRUMENT
- ☐ SAFETY RELATED INSTRUMENT, LOCALLY MOUNTED
- WALL
 - INSTRUMENT
 - INSTRUMENT SUPPORT
 - EMBEDDED STEEL PLATE
- SEISMIC CLASS 1 INSTRUMENT SUPPORT
- FLOOR
 - INSTRUMENT SUPPORT (PIPE STAND)
- FLOAT TYPE LEVEL INSTRUMENT
 - HI EL. --- HIGH FLUID LEVEL ACTUATION
 - LO EL. --- LOW FLUID LEVEL ACTUATION
- DISPLACER TYPE LEVEL INSTRUMENT (RIGHT HAND INSTRUMENT SHOWN)
- LEVEL GAGE
- TEMPERATURE ELEMENT (AMBIENT TEMPERATURE)

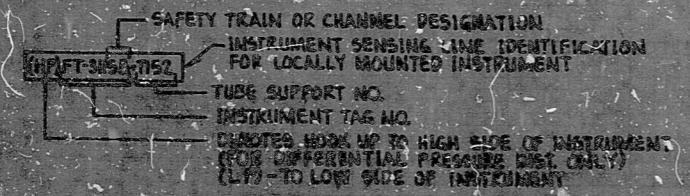
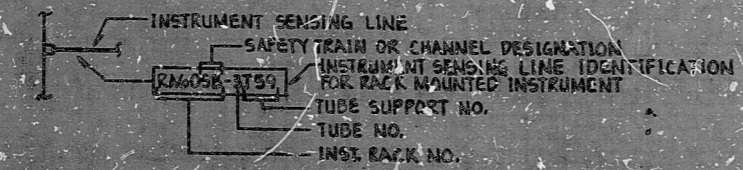


TYPICAL DESIGNATION FOR INSTRUMENT CONNECTION

CONN. FOR FI-AF3322 B16--INST. TAG NO.
EL. 339'-4"---APPROX. TAP ELEVATION
3AF6-0715B---PROCESS PIPE DESIGNATION

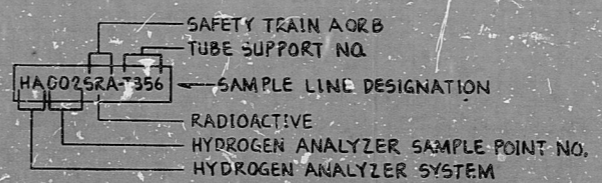
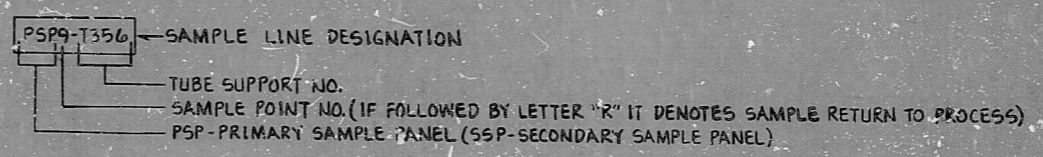


(I-0-A) PENETRATION IDENTIFICATION
& ELEVATION OF PENETRATION
EL. 339'-4"---INSTRUMENT SENSING LINE(S)
RAG058-3159---GOING THROUGH PENETRATION



SYMBOLS

- |—|— FLOW ELEMENT, ORIFICE PLATE TYPE
- |—|— FLOW ELEMENT, VENTURI TYPE
- |—|— FLOW ELEMENT, FLOW NOZZLE TYPE
- |—|— INSTRUMENT SENSING LINE
- |—|— PIPING BY OTHERS
- |—|— INSTRUMENT AIR SUPPLY HEADER
- |—|— INSTRUMENT AIR SUPPLY SUBHEADER
- |—|— INSTRUMENT AIR CONTROL LINE
- |—|— INSTRUMENT CAPILLARY TUBING
- ⊗ EQUIPMENT DRAIN
- ⊗ AIR OPERATED VALVES
- ⊗ AIR OPERATED VALVE WITH PILOT SOLENOID VALVE (TWO-DOTS DENOTE TWO PILOT SOLENOID VALVES)
- ⊗ REVERSE CURRENT VALVE WITH PILOT SOLENOID VALVE
- ⊗ INSTRUMENT AIR SUPPLY FROM TURBINE FLUID OPERATED PILOT VALVE
- ⊗ CONTROL VALVE WITH TRANSDUCER
- ⊗ TRANSDUCER (E/P OR I/K)
- ⊗ EQUIPMENT CONNECTION IDENTIFICATION NUMBER OR LETTER



POOR ORIGINAL PRC APERTURE CARD

NUCLEAR SAFETY RELATED / WPPSS QUALITY CLASS 1			
EBASCO SERVICES INCORPORATED		WASHINGTON PUBLIC POWER SUPPLY SYSTEM	
DIV. INSTRUMENTATION OR DFD		NUCLEAR PROJECT NO 243	
CH. A. JUBO		INSTRUMENT LOCATION ARRANGEMENT	
DATE OCT. 31, 1979		GENERAL NOTES, SYMBOLS & REFERENCES	
REV	DATE	BY	APPROVED
1			
2			
3			
4			
5			

17"

11"

8.5"

8.5"

11"

17"

RIDS

8303010162

