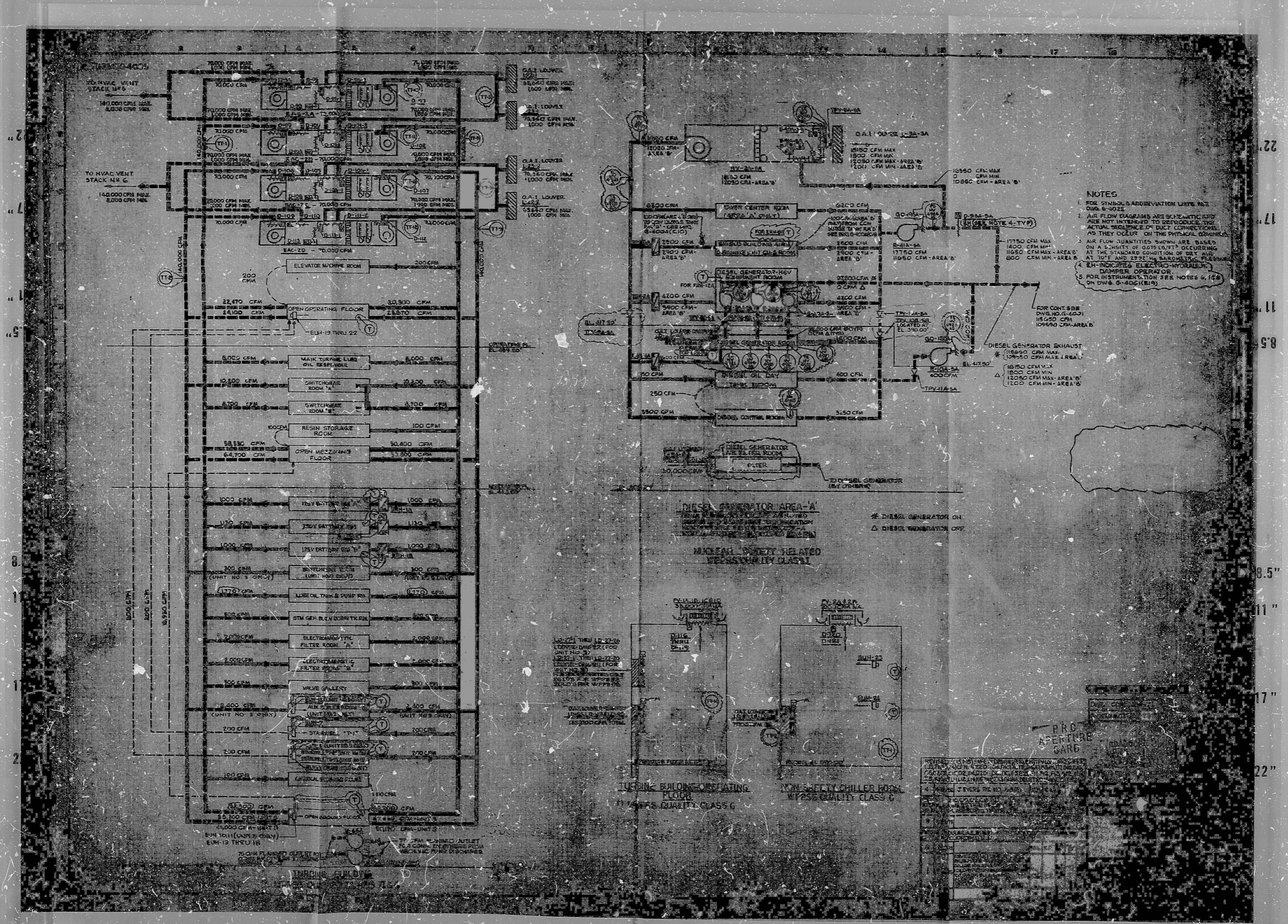


34

34



NOTES

- FOR SYMBOLS AND ABBREVIATION LIST, SEE DWG. E-3022.
- AIR FLOW DIAGRAMS ARE SCHEMATIC AND ARE NOT INTENDED TO REPRESENT THE ACTUAL SEQUENCE OF DUCT CONNECTIONS AS THEY OCCUR ON THE PHYSICAL DESIGN.
- AIR FLOW QUANTITIES SHOWN ARE BASED ON A DENSITY OF 0.075 LB/FT³ OCCURRING AT THE STANDARD CONDITION OF DRY AIR AT 70°F AND 29.92 IN. BAROMETRIC PRESSURE.
- EH INDICATES ELECTRO-MECHANICAL DAMPER OPERATOR.
- FOR INSTRUMENTATION SEE NOTES 4, 14 & ON DWG. E-3021(B).

PRO APERTURE GARD

REVISION	NO.	DATE	DESCRIPTION
1			
2			
3			
4			
5			
6			
7			
8			
9			
10			
11			
12			
13			
14			
15			

34

34

RIDS

8302250470

