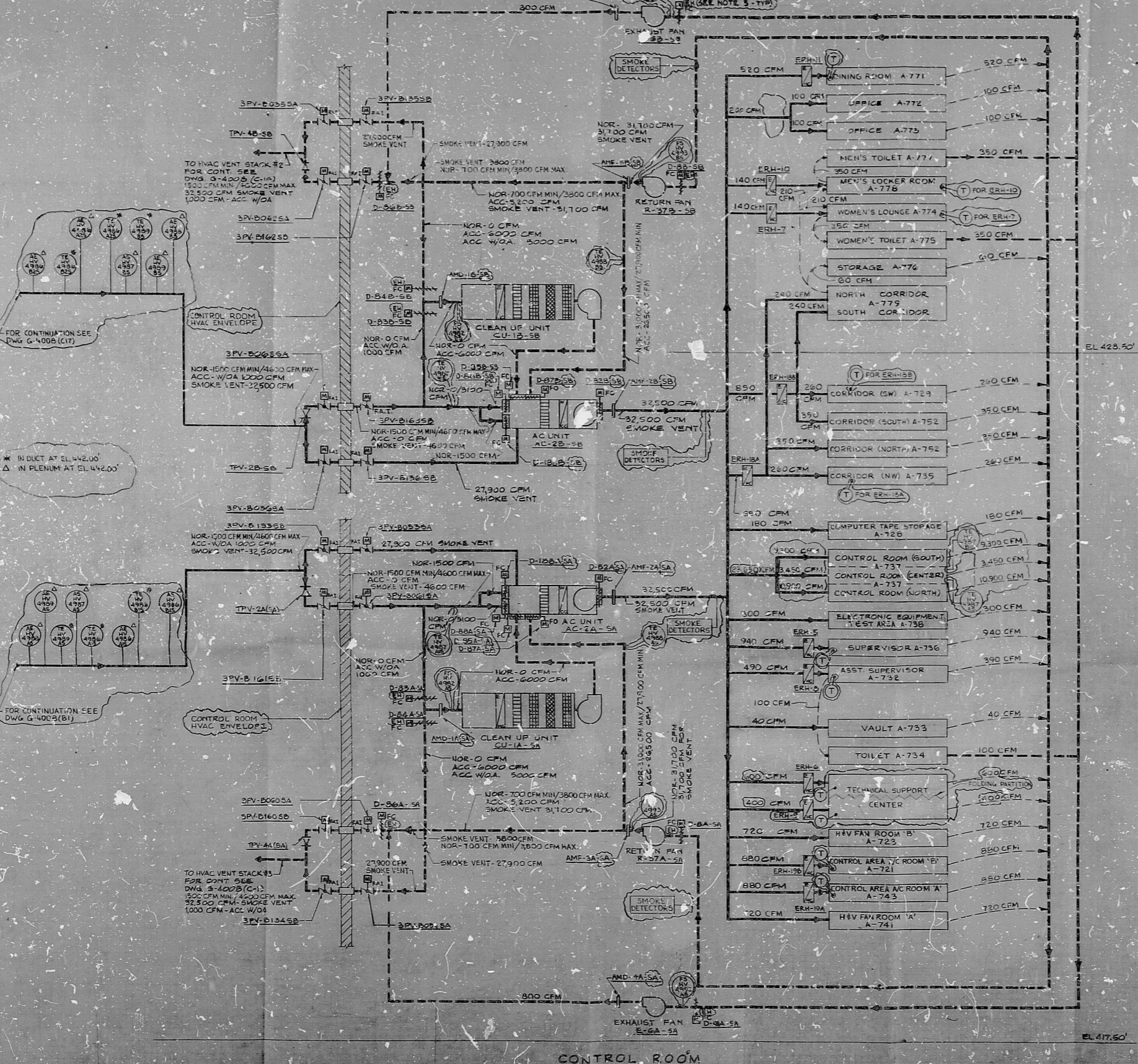


WPPS-324G-40H



- NOTES**
1. FOR SYMBOL AND ABBREVIATION LISTS SEE DWG. G-4023.
 2. THIS AIR FLOW DIAGRAM IS SCHEMATIC AND IS NOT INTENDED TO REPRODUCE THE ACTUAL SEQUENCE OF DUCT CONNECTIONS AS THEY OCCUR ON THE PHYSICAL DRAWINGS.
 3. FOR LOCATION OF BALANCING DAMPERS REFER TO THE PHYSICAL DRAWINGS.
 4. AIR FLOW QUANTITIES SHOWN ARE BASED ON A DENSITY OF 0.075 LB/FT³ OCCURRING AT THE STANDARD CONDITION OF DRY AIR AT 70°F AND 29.92" HG BAREOMETRIC PRESSURE.
 5. EH INDICATES ELECTRO-HYDRAULIC DAMPER OPERATOR.
 6. FOR OTHER INSTRUMENTATION, REFER TO EQUIPMENT MANUFACTURER DRAWINGS.
 7. FOR LOCATION OF INSTRUMENTATION TAPS REFER TO PHYSICAL DRAWINGS.
 8. AREA INSTRUMENTATION FOR SAFETY RELAY D AND C TANNING SYSTEMS REFER TO T & C DRAWING.

REFERENCE DRAWINGS

- HVAC AIR FLOW DIAGRAM ELECT & BATTERY ROOMS G-4008
- HVAC SYMBOL LIST & ABBREVIATIONS G-4023

WPPS QUALITY CLASS I-5 II

CONTRACT NO.	252
CONTRACT NO.	

NUCLEAR SAFETY RELATED

WASHINGTON PUBLIC POWER SUPPLY SYSTEM
NUCLEAR PROJECTS NO. 384

1954-1955 INSTALLATION
1954-1955 INSTALLATION
HVAC AIR FLOW DIAGRAM
CONTROL ROOM

EDWARDS & KELCEY INCORPORATED
7-7-57
WPPS-324G-40H
E-3011

REVISED (NO. REV.) (DATE) (BY) (REASON)

3	12-28-57	J.E.V.	REVISED TO REFLECT CHANGES TO THE CONTROL ROOM AREA
2	11-27-57	J.E.V.	REVISED TO REFLECT CHANGES TO THE CONTROL ROOM AREA
1	3-18-57	J.E.V.	REVISED TO REFLECT CHANGES TO THE CONTROL ROOM AREA

PRO APERTURE CARD

RIDS

8302250463

