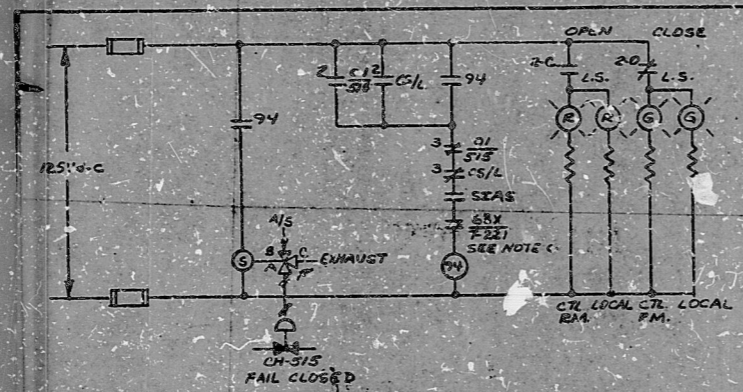


22  
17  
11  
8.5  
11  
17  
22



VALVE NO.	DESCRIPTION	CONTROL SW	LOCAL CONTROL SW
CH-315	LETDOWN ISOLATION	H5-513	H5-514 RSP

APPROVED  
REFERENCE  
DESIGN

6. ELECTRICAL SEPARATION IS REQUIRED FOR G34/T221 SINCE CH-315 IS A 15 CIRCUIT.  
5. G34/T221 CONTACT OPENS ON HIGH REGENERATIVE HEAT EXCHANGER OUTLET TEMP.  
4. SIA'S CLOSES VALVE.  
3. FOR OI AND CS/SWITCH DEVELOPMENT SEE FIG 063 SHT 1 DEV 12 FOR LSCUTCHED; SEE FIG 063 SHT 2, DEV 7.  
2. FOR L.S. DEVELOPMENT SEE FIG. 064 DEV 3.  
VALVE WILL REMAIN IN FAILURE POSITION UNTIL RESET FOLLOWING A LOSS OF POWER OR AUTO TRIP.

TR-1857

REV.	DESCRIPTION	BY	CHK.	ENG.	PROJ.
	INITIALLY RELEASED ADDED "O.A. STICKER" UPGRADED TO "APP" PER REG. 2973-27.7				

NO.	DATE	NO.	DATE	NO.	DATE	NO.	DATE
524510							

NUCLEAR SAFETY RELATED  
POWER SYSTEMS  
COMBUSTION ENGINEERING  
NUCLEAR POWER SYSTEMS  
CUSTOMER WASHINGTON PUBLIC POWER SUPPLY SYSTEM  
NUCLEAR PROJECTS 3 AND 5  
DWS NO. B3973-414-372 01  
SHEET 6 OF 11

QUANTITY VERIFIED  
THE ABOVE ELECTRICAL MATERIALS EQUIPMENT IS THIS DRAWING HAS BEEN REVIEWED AND APPROVED  
WHERE APPLICABLE THE ITEMS CONTAINED ON CHECK LIST...  
DATE 4/1/81  
DRAWN BY REG 80-01

POOR ORIGINAL

PRC  
APERTURE  
CARD

FILE COPY  
DO NOT SEND FROM OFFICE  
ORIGINAL SENT TO SITE

DISCREPANCY COMMENTS  
DUE BY 1-21-82

DESIGN	DISCIPLINE	ENGINEERING
	MECHANICAL	
	CIVIL	
	ELECTRICAL	
	INSTRUMENTATION	
	PLUMBING	
	WELDED	
	WATER TREATMENT	
	RADIATION	
	MATERIALS	
	SPRINKLER	
	CONTROL	

324C-1071 PRC  
WASHINGTON PUBLIC POWER SUPPLY SYSTEM  
WPPSS NUCLEAR PROJECT NO. 3  
PO C52B62

NO.	DATE	NO.	DATE	NO.	DATE	NO.	DATE

ELEMENTARY WIRING DIAGRAM SOLENOID OPERATED VALVES  
ERASCO SERVICES INCORPORATED  
CHECKED BY A.M. 2-2-82

22  
17  
11  
8.5  
11  
17  
22

**RIDS**

8302240206

