

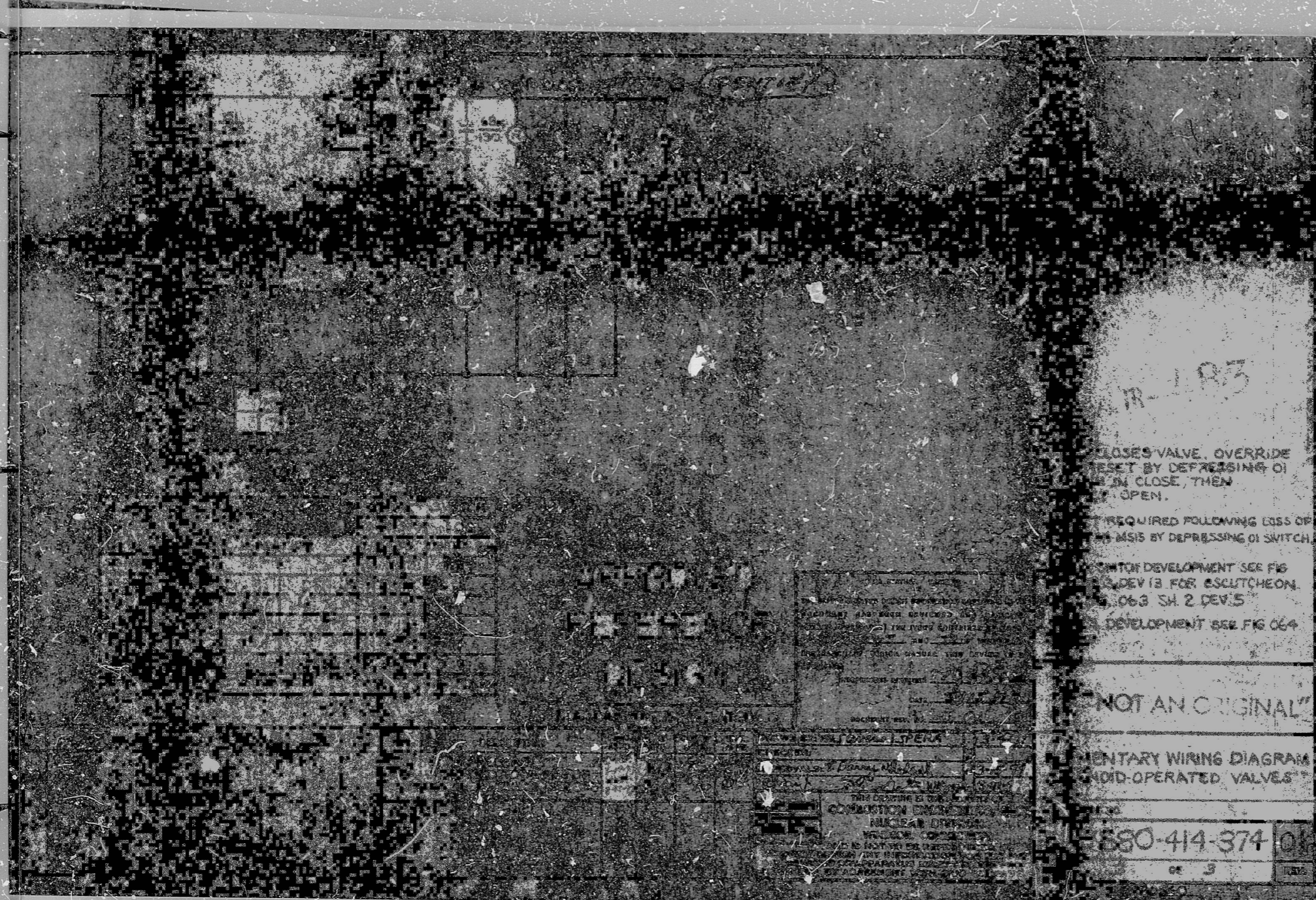
11

11

8

5

7



TR-483

CLOSES VALVE. OVERRIDE
 RESET BY DEPRESSING OI
 IN CLOSE, THEN
 OPEN.

REQUIRED FOLLOWING LOSS OF
 MSIS BY DEPRESSING OI SWITCH

TON DEVELOPMENT SEE FIG
 DEV 13 FOR ESCUTCHEON.
 SH. 2 DEV. 5

DEVELOPMENT SEE FIG 064

NOT AN ORIGINAL

MENTARY WIRING DIAGRAM
 AND OPERATED VALVES

880-414-374 0

OF 3

POOR ORIGINAL

WPPSS-EMERAC
 GROUP

WPPSS-EMERAC
 GROUP
 MAR 28 1977

RECEIVED

PROC
 APERTURE
 CARD

FOR YOUR REVIEW AND COMMENT
 DUE 5-6-77

TR-483

OPS 3240 3243 R0 12

WASHINGTON PUBLIC POWER
 SUPPLY SYSTEM
 WPPSS MULTICAT PROJECT NO. 3

P.A. CE 289 ITEM

REVIEWED CONTRACT COMMENTS	9	1
REVIEWED OTHER COMMENTS AS NOTED	9	2
NOT APPLICABLE	3	3
NO COMMENTS, DO PRINT REVISIONS	3	4
FOR INFORMATION ONLY	3	5
BY PRINTING UNDOUBTABLE REVISIONS	6	6
REVISIONS SHOWN	7	7
SEE NOTE BELOW	7	8
REVISIONS	7	9
REVISIONS	7	10
DO NOT SIGNIFY NO REVISIONS	7	11
REVISIONS	7	12

REVISIONS

DATE: 4/17/77

BY: M

WPPSS SERVICES INCORPORATED
 2 DECATUR ST. NEW YORK, N.Y. 10005

DISCIPLINE	DISCIPLINE	DISCIPLINE
MECHANICAL	MECHANICAL	MECHANICAL
CONC-HYO	CONC-HYO	CONC-HYO
ARCH	ARCH	ARCH
STRUCY	STRUCY	STRUCY
INSTN/R	INSTN/R	INSTN/R
CONTROLS	CONTROLS	CONTROLS
PLUMBING	PLUMBING	PLUMBING
HVAC	HVAC	HVAC
ELECTRICAL	ELECTRICAL	ELECTRICAL
WTR TREAT	WTR TREAT	WTR TREAT
INDUSTRY	INDUSTRY	INDUSTRY
SHIELDING	SHIELDING	SHIELDING
MATERIALS	MATERIALS	MATERIALS
CONVY	CONVY	CONVY
LICENSING	LICENSING	LICENSING

17

RIDS

8302230041

