

11

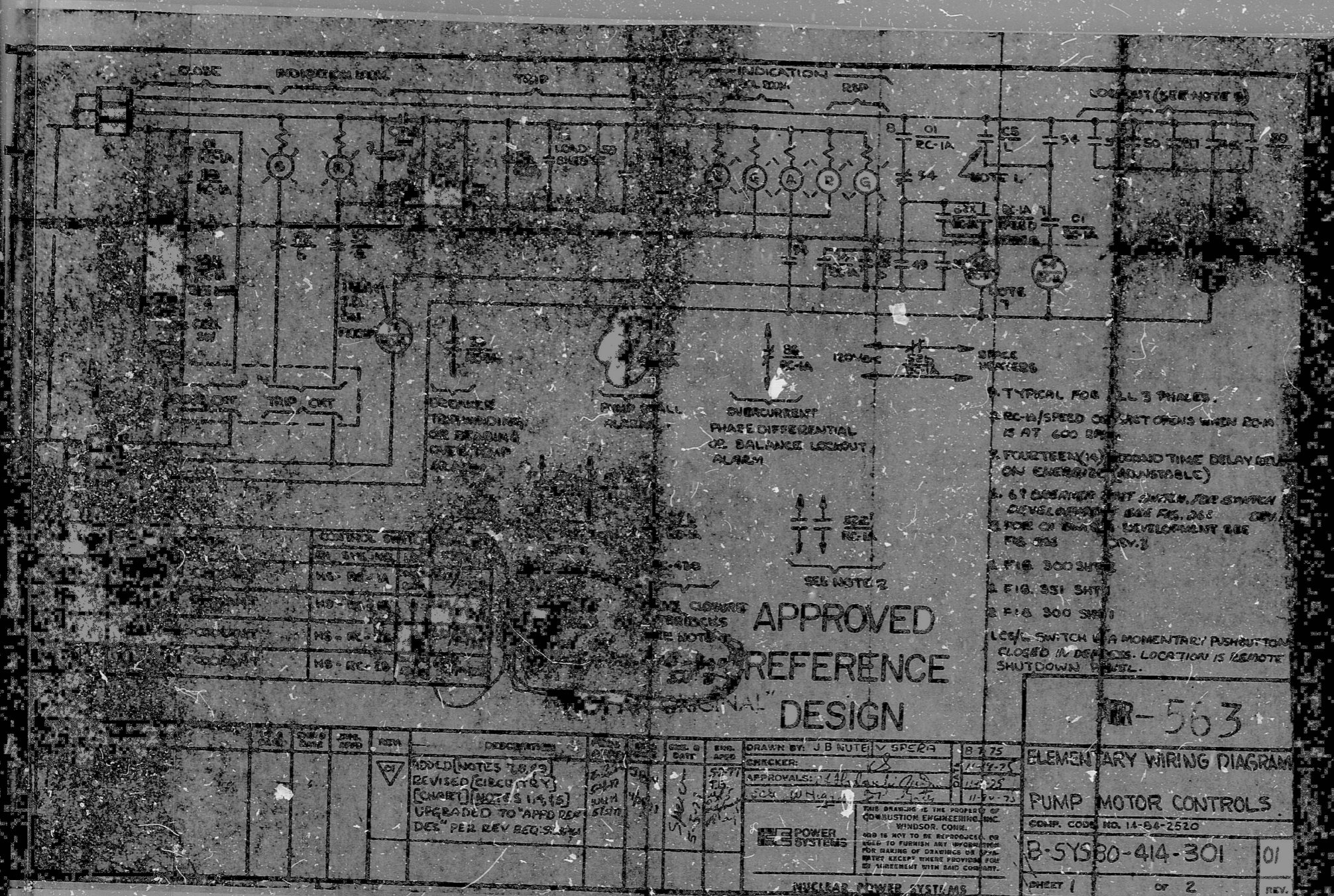
11

5'8

8.5"

11"

17"



RECEIVED
MAY 17 1977
WPPSS-UMDRAG GROUP

POOR ORIGINAL

FOR YOUR REVIEW AND COMMENT

FILE COPY USE 6-24-77

DO NOT SEND FROM OFFICE
ORIGINAL SENT TO SI

3240-916 R2

DESIGN FOR	DISCIPLINE	ENGINEERING	
		INFO	CONTR.
MECHANICAL			
CIVIL			
ELECTRICAL			
PLUMBING			
HVAC			
WELDING			
CONCRETE			
STEEL			
PAINT			
INSULATION			
PIPELINES			
WATER TREAT			
WASTE			
STRESS			
SHIELDING			
MATERIALS			
CONST.			
LICENSING			

WASHINGTON PUBLIC POWER SUPPLY SYSTEM
WPPSS-UMDRAG PROJECT NO. 2

P.O. 3240-916 R2

DESIGNED BY: [Signature]

DATE: 5/17/77

2 RECTORY ST. NEW YORK, N.Y. 10038

APPROVED
REFERENCE
DESIGN

PR-563
ELEMENTARY WIRING DIAGRAM
PUMP MOTOR CONTROLS
SIMP. CODE NO. 14-64-2520
B-5YS80-414-301 01
SHEET 1 OF 2 REV.

APERTURE CARD

RIDS

8302220541

