

11

11

8.5"

8.5"

11"

17"

H-657 SH 41 (Q)

SIZE E

11

11

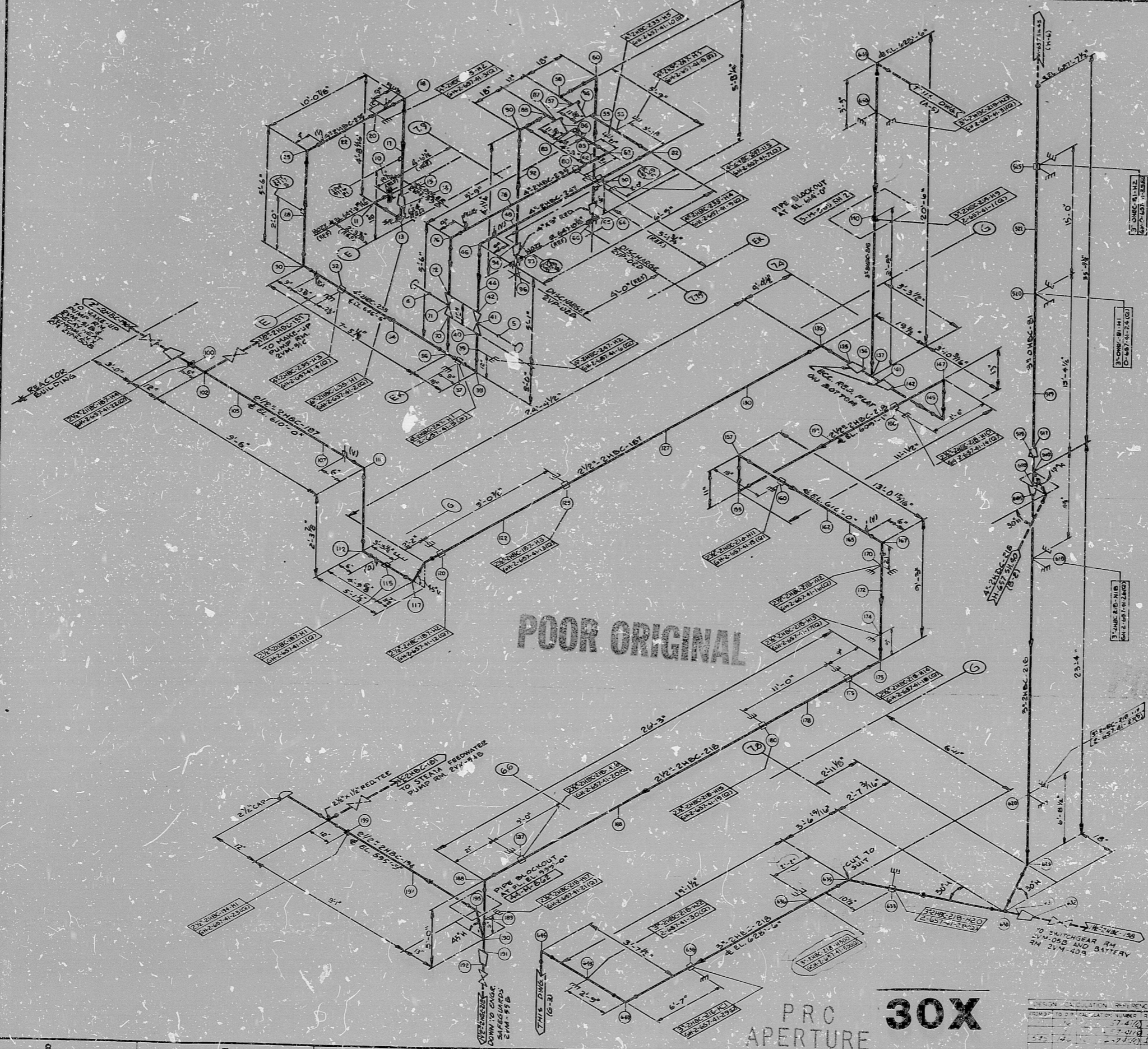
8.5"

8.5"

11"

17"

THIS DRAWING AND THE DESIGN THEREON ARE THE PROPERTY OF BECHTEL. THEY ARE NOT TO BE REPRODUCED, COPIED, REPRODUCED, OR TRANSMITTED IN ANY MANNER WITHOUT THE WRITTEN PERMISSION OF BECHTEL.

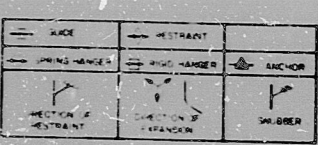


POOR ORIGINAL

PRO APERTURE 30X



APPROX. L.F. 303



- REVISIONS**
1. ALL PIPING TO BE FABRICATED AND INSTALLED IN ACCORDANCE WITH SPECIFICATIONS 7220-055, IN SUP. 02-2004.
  2. FOR VERTICAL HANGING OF PIPE, VALVES AND FITTINGS, USE SPECIAL CLAMP BRACKETS SEE 7-402.
  3. USE PIPING AND FITTING DIMENSIONS AND SPEC. D-497 941.0.
  4. FOR EQUIPMENT LIST SEE 8-402.
  5. FOR EQUIPMENT CONNECTIONS METAL SEE 8-401.
  6. BE AWARENESS OF ALL HANGERS AND HANGERS MUST BE USED AND ALL PIPING TO BE HANGERS AT THE CORRECT POSITION UNLESS OTHERWISE NOTED - THE DRAWING.
  7. FOR PIPING SYSTEMS, REFER TO DRAWINGS 7220-055, 7220-056, 7220-057, 7220-058, 7220-059, 7220-060, 7220-061, 7220-062, 7220-063, 7220-064, 7220-065, 7220-066, 7220-067, 7220-068, 7220-069, 7220-070, 7220-071, 7220-072, 7220-073, 7220-074, 7220-075, 7220-076, 7220-077, 7220-078, 7220-079, 7220-080, 7220-081, 7220-082, 7220-083, 7220-084, 7220-085, 7220-086, 7220-087, 7220-088, 7220-089, 7220-090, 7220-091, 7220-092, 7220-093, 7220-094, 7220-095, 7220-096, 7220-097, 7220-098, 7220-099, 7220-100.
  8. FOR PIPING HANGERS, REFER TO DRAWING 7220-055, 7220-056, 7220-057, 7220-058, 7220-059, 7220-060, 7220-061, 7220-062, 7220-063, 7220-064, 7220-065, 7220-066, 7220-067, 7220-068, 7220-069, 7220-070, 7220-071, 7220-072, 7220-073, 7220-074, 7220-075, 7220-076, 7220-077, 7220-078, 7220-079, 7220-080, 7220-081, 7220-082, 7220-083, 7220-084, 7220-085, 7220-086, 7220-087, 7220-088, 7220-089, 7220-090, 7220-091, 7220-092, 7220-093, 7220-094, 7220-095, 7220-096, 7220-097, 7220-098, 7220-099, 7220-100.
  9. FOR PIPING AND FITTINGS, REFER TO DRAWING 7220-055, 7220-056, 7220-057, 7220-058, 7220-059, 7220-060, 7220-061, 7220-062, 7220-063, 7220-064, 7220-065, 7220-066, 7220-067, 7220-068, 7220-069, 7220-070, 7220-071, 7220-072, 7220-073, 7220-074, 7220-075, 7220-076, 7220-077, 7220-078, 7220-079, 7220-080, 7220-081, 7220-082, 7220-083, 7220-084, 7220-085, 7220-086, 7220-087, 7220-088, 7220-089, 7220-090, 7220-091, 7220-092, 7220-093, 7220-094, 7220-095, 7220-096, 7220-097, 7220-098, 7220-099, 7220-100.
  10. FOR PIPING AND FITTINGS, REFER TO DRAWING 7220-055, 7220-056, 7220-057, 7220-058, 7220-059, 7220-060, 7220-061, 7220-062, 7220-063, 7220-064, 7220-065, 7220-066, 7220-067, 7220-068, 7220-069, 7220-070, 7220-071, 7220-072, 7220-073, 7220-074, 7220-075, 7220-076, 7220-077, 7220-078, 7220-079, 7220-080, 7220-081, 7220-082, 7220-083, 7220-084, 7220-085, 7220-086, 7220-087, 7220-088, 7220-089, 7220-090, 7220-091, 7220-092, 7220-093, 7220-094, 7220-095, 7220-096, 7220-097, 7220-098, 7220-099, 7220-100.
  11. FOR PIPING AND FITTINGS, REFER TO DRAWING 7220-055, 7220-056, 7220-057, 7220-058, 7220-059, 7220-060, 7220-061, 7220-062, 7220-063, 7220-064, 7220-065, 7220-066, 7220-067, 7220-068, 7220-069, 7220-070, 7220-071, 7220-072, 7220-073, 7220-074, 7220-075, 7220-076, 7220-077, 7220-078, 7220-079, 7220-080, 7220-081, 7220-082, 7220-083, 7220-084, 7220-085, 7220-086, 7220-087, 7220-088, 7220-089, 7220-090, 7220-091, 7220-092, 7220-093, 7220-094, 7220-095, 7220-096, 7220-097, 7220-098, 7220-099, 7220-100.
  12. FOR PIPING AND FITTINGS, REFER TO DRAWING 7220-055, 7220-056, 7220-057, 7220-058, 7220-059, 7220-060, 7220-061, 7220-062, 7220-063, 7220-064, 7220-065, 7220-066, 7220-067, 7220-068, 7220-069, 7220-070, 7220-071, 7220-072, 7220-073, 7220-074, 7220-075, 7220-076, 7220-077, 7220-078, 7220-079, 7220-080, 7220-081, 7220-082, 7220-083, 7220-084, 7220-085, 7220-086, 7220-087, 7220-088, 7220-089, 7220-090, 7220-091, 7220-092, 7220-093, 7220-094, 7220-095, 7220-096, 7220-097, 7220-098, 7220-099, 7220-100.
  13. ALL PIPING TO BE HANGERS AND HANGERS MUST BE USED AND ALL PIPING TO BE HANGERS AT THE CORRECT POSITION UNLESS OTHERWISE NOTED - THE DRAWING.
  14.  $\square$  INDICATES PIPING HANGERS FOR WALL PENETRATION.
  15.  $\square$  INDICATES PIPING HANGERS FOR WALL PENETRATION.
  16.  $\square$  INDICATES PIPING HANGERS FOR WALL PENETRATION.
  17.  $\square$  INDICATES PIPING HANGERS FOR WALL PENETRATION.

NO.	DESCRIPTION	DATE	BY	CHECKED
1	ADDED HIGGS 8 IN. 10 TANK	11/17/04	JL	JK
2	CHANGED DIMENSIONS AND	11/17/04	JL	JK
3	ADDED HIGGS 8 IN. 10 TANK	11/17/04	JL	JK
4	ADDED HIGGS 8 IN. 10 TANK	11/17/04	JL	JK
5	ADDED HIGGS 8 IN. 10 TANK	11/17/04	JL	JK
6	ADDED HIGGS 8 IN. 10 TANK	11/17/04	JL	JK
7	ADDED HIGGS 8 IN. 10 TANK	11/17/04	JL	JK
8	ADDED HIGGS 8 IN. 10 TANK	11/17/04	JL	JK
9	ADDED HIGGS 8 IN. 10 TANK	11/17/04	JL	JK
10	ADDED HIGGS 8 IN. 10 TANK	11/17/04	JL	JK
11	ADDED HIGGS 8 IN. 10 TANK	11/17/04	JL	JK
12	ADDED HIGGS 8 IN. 10 TANK	11/17/04	JL	JK
13	ADDED HIGGS 8 IN. 10 TANK	11/17/04	JL	JK
14	ADDED HIGGS 8 IN. 10 TANK	11/17/04	JL	JK
15	ADDED HIGGS 8 IN. 10 TANK	11/17/04	JL	JK
16	ADDED HIGGS 8 IN. 10 TANK	11/17/04	JL	JK
17	ADDED HIGGS 8 IN. 10 TANK	11/17/04	JL	JK

**BECHTEL**  
 200 19500 BUCKLE

MIDLAND PLANT UNITS 1 & 2  
 CONSUMERS POWER COMPANY

HANGER ISOMETRIC  
 AUX. BLDG SAFETY RELATED  
 CHILLED WATER SYSTEM  
 UNIT 2 TRAIN "B" SUPPLY

DESIGNATION NUMBER REFERENCE  
 7220-055 7220-056 7220-057 7220-058 7220-059 7220-060 7220-061 7220-062 7220-063 7220-064 7220-065 7220-066 7220-067 7220-068 7220-069 7220-070 7220-071 7220-072 7220-073 7220-074 7220-075 7220-076 7220-077 7220-078 7220-079 7220-080 7220-081 7220-082 7220-083 7220-084 7220-085 7220-086 7220-087 7220-088 7220-089 7220-090 7220-091 7220-092 7220-093 7220-094 7220-095 7220-096 7220-097 7220-098 7220-099 7220-100

JOB No. 7220 H-657 SH 41 (Q) REV. 11

4. CARDI

RIDS

8302160130

