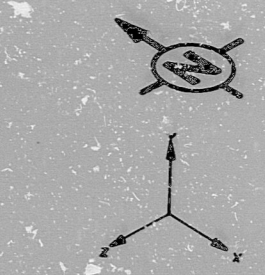
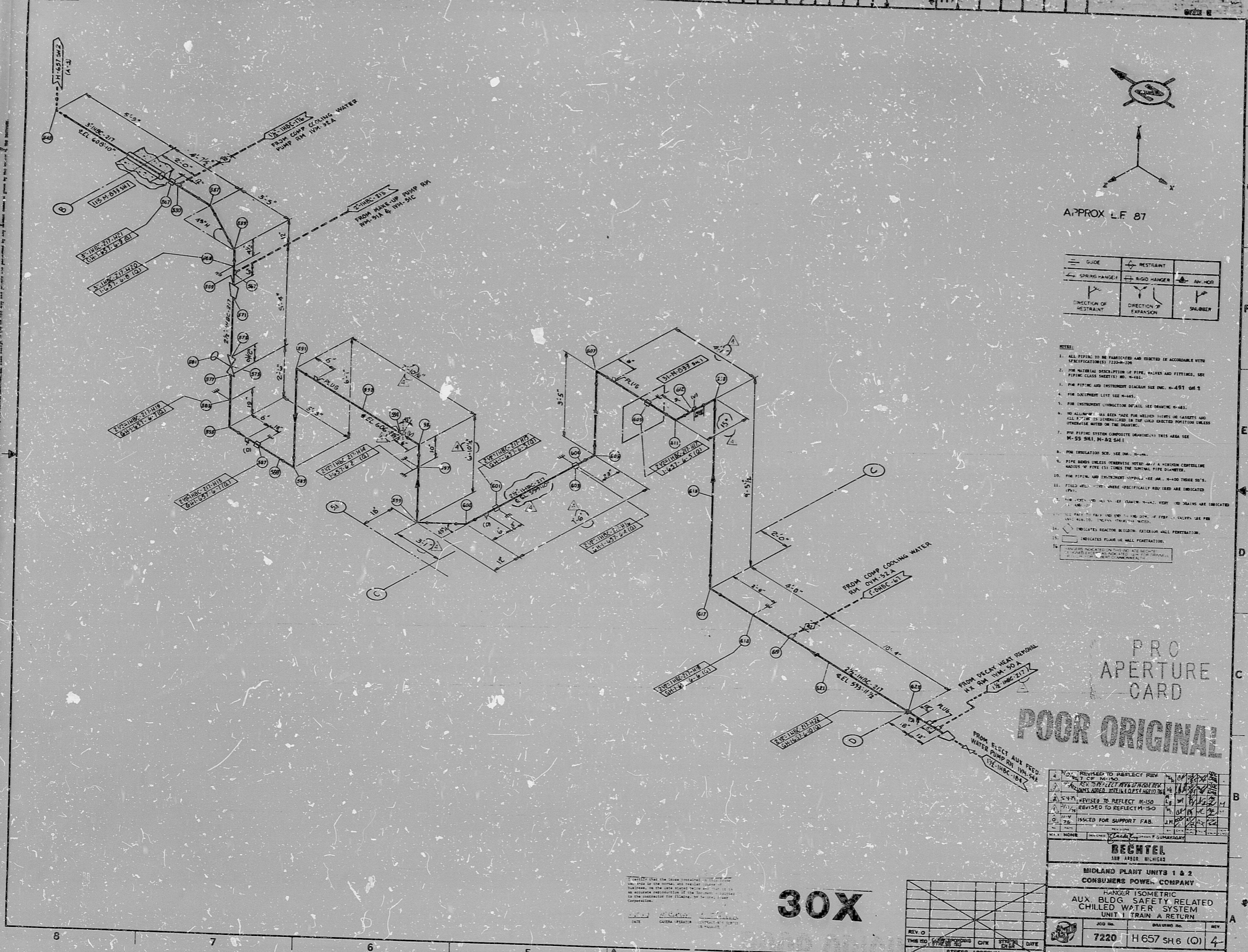


H657 SH 6 (O)



APPROX L.F. 87


- NOTES:
1. ALL PIPING TO BE FABRICATED AND INSTALLED IN ACCORDANCE WITH SPECIFICATIONS 7200-100.
  2. FOR MATERIAL DESCRIPTION OF PIPE, VALVES AND FITTINGS, SEE PIPING CLASS SHEETS (NO. H-481).
  3. FOR PIPING AND INSTRUMENT DIAGRAMS SEE INC. H-451 SHEETS.
  4. FOR EQUIPMENT LIST SEE H-445.
  5. FOR INSTRUMENT CONNECTION DETAILS SEE DRAWING H-481.
  6. NO ALLOWANCE HAS BEEN MADE FOR BELIEVED RISERS OR CASSETS AND ALL PIPING IS TO BE SUPPORTED IN THE UNDESIGNATED PORTION UNLESS OTHERWISE NOTED ON THE DIAGRAM.
  7. FOR PIPING SYSTEM COMPOSITE DIAGRAMS THIS AREA SEE H-500 SHEET, H-482 SHEET.
  8. FOR INSULATION SEE INC. H-445.
  9. PIPE SIZES UNLESS OTHERWISE NOTED SHALL BE NOMINAL. CONTROLLING NUMBER OF PIPES SHALL BE THE NOMINAL PIPE DIAMETER.
  10. FOR PIPING AND INSTRUMENT SYMBOLS SEE INC. H-400 THROUGH 410.
  11. FIELD WELD SYMBOLS SPECIFICALLY NOTED ARE INDICATED (FWS).
  12. PIPING SHALL BE 1/2" MINIMUM WALL THICKNESS UNLESS OTHERWISE INDICATED.
  13. ALL PIPING TO BE PAINTED AND END TO END WITH 1/2" MINIMUM GAP FOR ALL JOINTS. UNLESS OTHERWISE NOTED.
  14. INDICATES REACTOR BUILDING EXTERIOR WALL PENETRATION.
  15. INDICATES FLANGE WALL PENETRATION.
  16. PENETRATIONS IN REACTOR BUILDING EXTERIOR WALL SHALL BE IN ACCORDANCE WITH THE REACTOR BUILDING EXTERIOR WALL PENETRATION SPECIFICATIONS.

PRO APERTURE CARD

POOR ORIGINAL

REVISED TO REFLECT REV. 1	DATE	BY	CHKD	DATE	BY
REVISED TO REFLECT REV. 2	DATE	BY	CHKD	DATE	BY
REVISED TO REFLECT REV. 3	DATE	BY	CHKD	DATE	BY
REVISED TO REFLECT REV. 4	DATE	BY	CHKD	DATE	BY
ISSUED FOR SUPPORT FAB.	DATE	BY	CHKD	DATE	BY
DATE	BY	CHKD	DATE	BY	

**BECHTEL**  
 1000 AVENUE OF THE STARS  
 MIDLAND PLANT UNITS 1 & 2  
 CONSUMERS POWER COMPANY

HANGER ISOMETRIC  
 AUX BLDG SAFETY RELATED  
 CHILD WATER SYSTEM  
 UNIT 1 TRAIN A RETURN

JOB NO. **7220** DRAWING NO. **H 657 SH 6 (O)** REV. **4**

30X

REV. 0	DATE	BY	CHKD	DATE	BY
THIS REV.	DATE	BY	CHKD	DATE	BY
STRESS APPROVAL					

17"  
11"  
8.5"  
6.5"  
11"  
17"

17"  
11"  
8.5"  
6.5"  
11"  
17"



RIDS

8302160108

