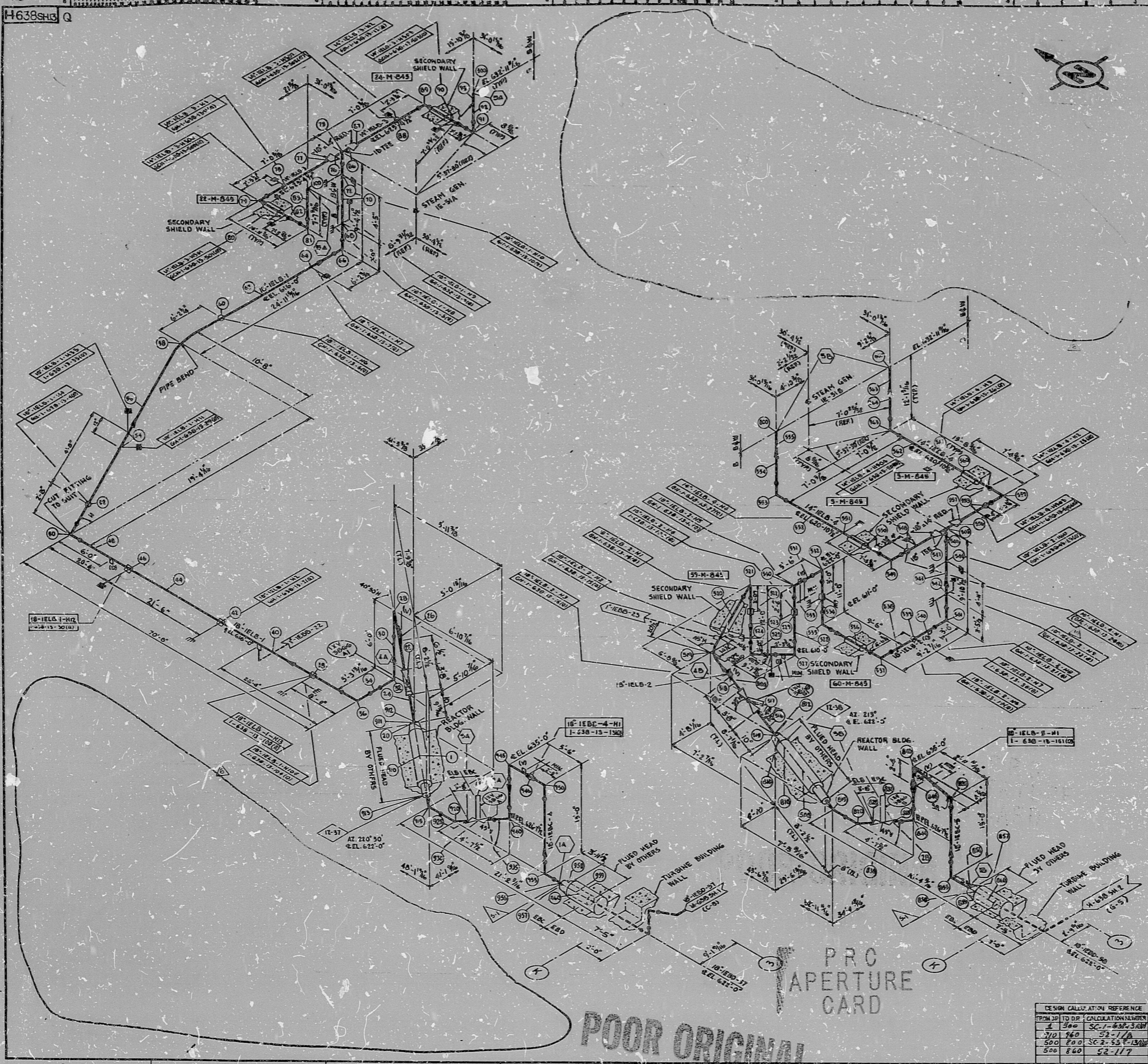


H638SH3 Q

SIZE E

APPROX. LF 483



- NOTES:**
- ALL DIMENSIONS ARE UNLESS OTHERWISE SPECIFIED IN INCHES AND DECIMALS THEREOF.
 - PIPE SIZES ARE NOMINAL UNLESS OTHERWISE SPECIFIED.
 - PIPE WALL THICKNESS SHALL BE AS SHOWN OR AS SPECIFIED IN THE APPROPRIATE SPECIFICATIONS.
 - PIPE FITTINGS SHALL BE AS SHOWN OR AS SPECIFIED IN THE APPROPRIATE SPECIFICATIONS.
 - PIPE SUPPORTS SHALL BE AS SHOWN OR AS SPECIFIED IN THE APPROPRIATE SPECIFICATIONS.
 - PIPE HANGERS SHALL BE AS SHOWN OR AS SPECIFIED IN THE APPROPRIATE SPECIFICATIONS.
 - PIPE RESTRAINTS SHALL BE AS SHOWN OR AS SPECIFIED IN THE APPROPRIATE SPECIFICATIONS.
 - PIPE ANCHORS SHALL BE AS SHOWN OR AS SPECIFIED IN THE APPROPRIATE SPECIFICATIONS.
 - PIPE SPRING HANGERS SHALL BE AS SHOWN OR AS SPECIFIED IN THE APPROPRIATE SPECIFICATIONS.
 - PIPE PMSD HANGERS SHALL BE AS SHOWN OR AS SPECIFIED IN THE APPROPRIATE SPECIFICATIONS.
 - PIPE FITTINGS SHALL BE AS SHOWN OR AS SPECIFIED IN THE APPROPRIATE SPECIFICATIONS.
 - PIPE SUPPORTS SHALL BE AS SHOWN OR AS SPECIFIED IN THE APPROPRIATE SPECIFICATIONS.
 - PIPE HANGERS SHALL BE AS SHOWN OR AS SPECIFIED IN THE APPROPRIATE SPECIFICATIONS.
 - PIPE RESTRAINTS SHALL BE AS SHOWN OR AS SPECIFIED IN THE APPROPRIATE SPECIFICATIONS.
 - PIPE ANCHORS SHALL BE AS SHOWN OR AS SPECIFIED IN THE APPROPRIATE SPECIFICATIONS.
 - PIPE SPRING HANGERS SHALL BE AS SHOWN OR AS SPECIFIED IN THE APPROPRIATE SPECIFICATIONS.
 - PIPE PMSD HANGERS SHALL BE AS SHOWN OR AS SPECIFIED IN THE APPROPRIATE SPECIFICATIONS.

REFERENCE DRGS.

16-300 - TYPES OF PIPED HEAD FITTINGS FOR CONTAINMENT PIPING PENETRATIONS.
 16-301 - REACTOR BUILDING MECHANICAL PENETRATION SCHEDULE S&I.

3.0 X

REPLICATED BY MICROFILMING
 I certify that the above information was obtained from the original and that it is an accurate reproduction of the original as submitted to the contractor for review by Nuclear Power Corporation.

SITE: CAMEL PEAK, CONTRACTOR SUPPLY

	NO. 1	DATE	BY
	NO. 2	DATE	BY
	NO. 3	DATE	BY
	NO. 4	DATE	BY
	NO. 5	DATE	BY
	NO. 6	DATE	BY
	NO. 7	DATE	BY
	NO. 8	DATE	BY
	NO. 9	DATE	BY
	NO. 10	DATE	BY

DECEL	
AND ASSOCIATES	
MIDLAND PLANT UNITS 1 & 2	
CONSUMERS POWER COMPANY	
MATEUR ISOMETRIC	
FEEDWATER AND CONDENSATE	
SYSTEM UNIT - 1	
(REACTOR BLDG. MAIN FEEDWATER HEADER)	
DESIGN NO.	7220
ISSUED BY	H-638 SH3(Q)
REV.	6

DESIGN	CALCULATION	REFERENCE
500 860	SC-2-52-13	Q
500 860	SC-2-52-13	Q
500 860	SC-2-52-13	Q

PRO APERTURE CARD

POOR ORIGINAL

8.5"

11"

17"

8.5"

11"

17"

8.5"

11"

17"

8.5"

11"

17"

RIDS

8302160082

