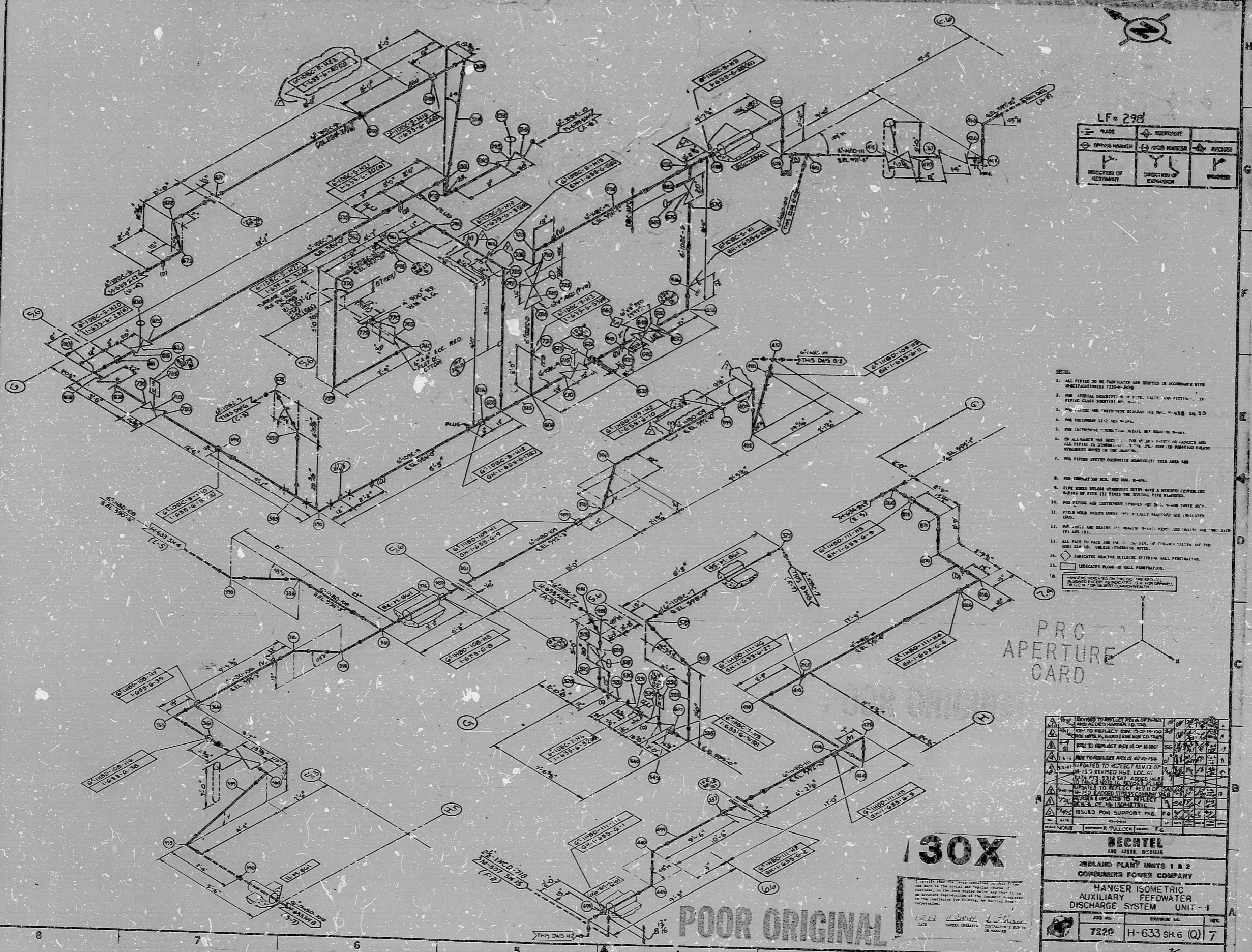


H-633 SH.6 (Q)

17"
11"
8.5"
8.5"
11"
17"

17"
11"
8.5"
8.5"
11"
17"



LF = 290

PLATE	SEQUENCE
SYMBOL NUMBER	JOB NUMBER
DIRECTION OF RETRACTION	DIRECTION OF EXPANSION
	ACCESS

- NOTES:
1. ALL FITTINGS TO BE FABRICATED AND SHIPPED IN ACCORDANCE WITH SPECIFICATIONS 7220-0-009.
 2. FOR SPECIAL DESCRIPTIONS OF PIPE, VALVE, AND FITTING, REFER TO THE DRAWING NOTES.
 3. FOR FITTING AND INSTRUMENT SYMBOLS, REFER TO 7-408 THREE SIX.
 4. FOR PIPELINE LIST, SEE 7-408.
 5. FOR INSTRUMENT SYMBOLS, REFER TO 7-408 THREE SIX.
 6. ALL VALVES HAS BEEN ...
 7. FOR PIPELINE SYSTEMS, REFER TO THE DRAWING.
 8. FOR INSULATION, SEE 7-408.
 9. PIPE BEARS WEIGHT WHEREVER THEY HAVE A HANGING CENTERLINE NUMBER OF FIVE (5) TIMES THE NORMAL PIPE WEIGHT.
 10. FOR FITTING AND INSTRUMENT SYMBOLS, REFER TO 7-408 THREE SIX.
 11. FIELDS BEING MOVED MUST BE PROPERLY SUPPORTED AND BRACKETED (P.S.).
 12. FOR VALVE AND DRAIN, SEE DRAWING 7-408 THREE SIX.
 13. ALL FACE TO FACE AND END TO END, THE FLANGES SHALL BE PER ANSI B16.5, UNLESS OTHERWISE NOTED.
 14. \square INDICATES REACTOR FLUING, EXTERIOR WALL PENETRATION.
 15. \square INDICATES PLACE OF WALL PENETRATION.
 16. CHANGES SPECIFIED ON THIS DRAWING TO BE MADE TO THE ORIGINAL DRAWING FOR THE PROJECT.

PRC APERTURE CARD

REVISIONS TO BE MADE TO THE ORIGINAL DRAWING	DATE	BY
REVISED TO REFLECT REV. 15 OF H-633 SH.6 (Q)	10/15/68	J. J. ...
REVISED TO REFLECT REV. 16 OF H-633 SH.6 (Q)	10/15/68	J. J. ...
REVISED TO REFLECT REV. 17 OF H-633 SH.6 (Q)	10/15/68	J. J. ...
REVISED TO REFLECT REV. 18 OF H-633 SH.6 (Q)	10/15/68	J. J. ...
REVISED TO REFLECT REV. 19 OF H-633 SH.6 (Q)	10/15/68	J. J. ...
REVISED TO REFLECT REV. 20 OF H-633 SH.6 (Q)	10/15/68	J. J. ...
REVISED TO REFLECT REV. 21 OF H-633 SH.6 (Q)	10/15/68	J. J. ...
REVISED TO REFLECT REV. 22 OF H-633 SH.6 (Q)	10/15/68	J. J. ...
REVISED TO REFLECT REV. 23 OF H-633 SH.6 (Q)	10/15/68	J. J. ...
REVISED TO REFLECT REV. 24 OF H-633 SH.6 (Q)	10/15/68	J. J. ...
REVISED TO REFLECT REV. 25 OF H-633 SH.6 (Q)	10/15/68	J. J. ...
REVISED TO REFLECT REV. 26 OF H-633 SH.6 (Q)	10/15/68	J. J. ...
REVISED TO REFLECT REV. 27 OF H-633 SH.6 (Q)	10/15/68	J. J. ...
REVISED TO REFLECT REV. 28 OF H-633 SH.6 (Q)	10/15/68	J. J. ...
REVISED TO REFLECT REV. 29 OF H-633 SH.6 (Q)	10/15/68	J. J. ...
REVISED TO REFLECT REV. 30 OF H-633 SH.6 (Q)	10/15/68	J. J. ...

30X

POOR ORIGINAL

RECNTEL
AND LABOR, MICHIGAN

MIDLAND PLANT UNITS 1 & 2
CONDENSERS POWER COMPANY

HANGER ISOMETRIC
AUXILIARY FEEDWATER
DISCHARGE SYSTEM UNIT - 1

7220 H-633 SH.6 (Q) 7

RIDS

8302160059

