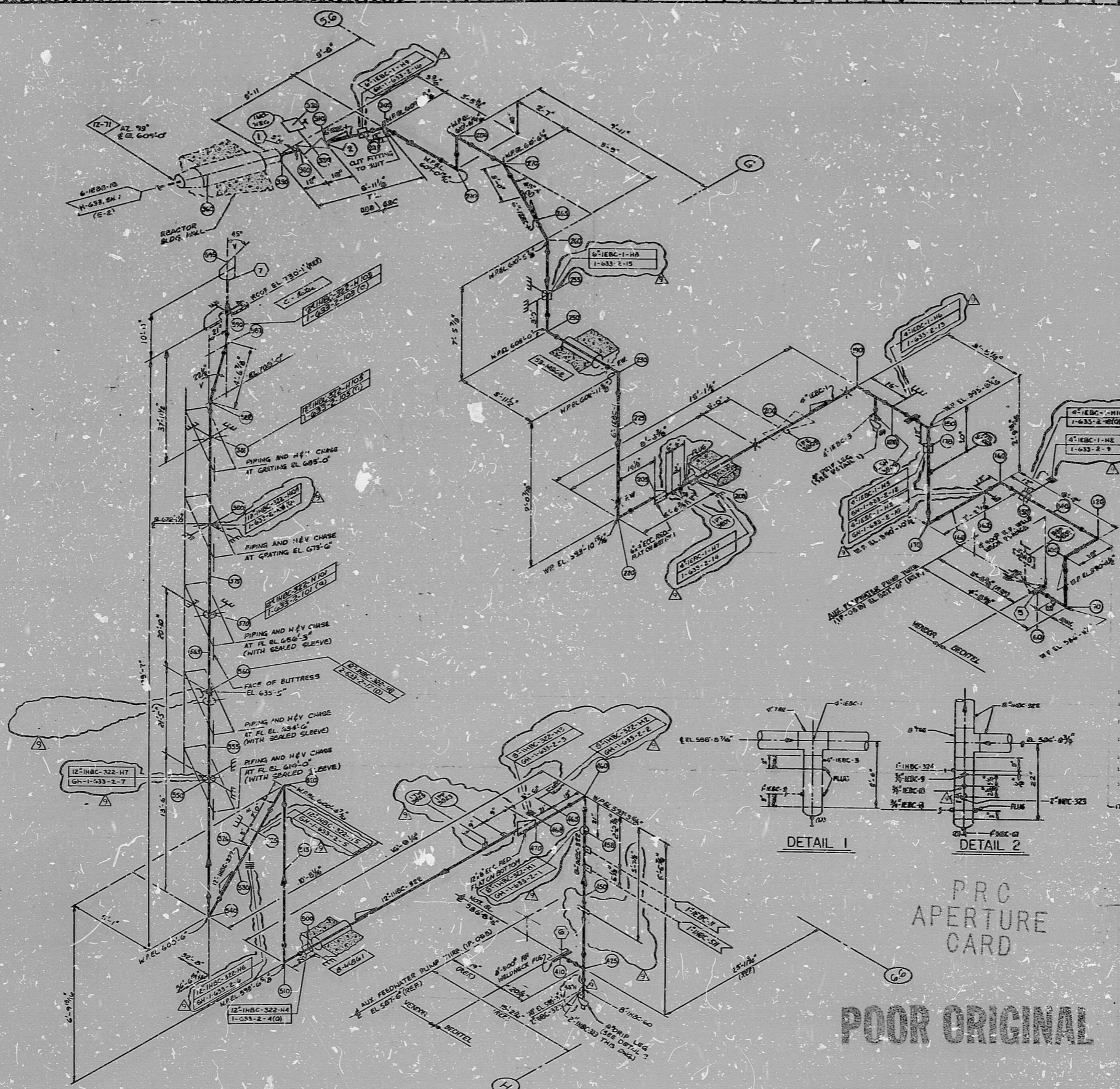


H-633 SH.2

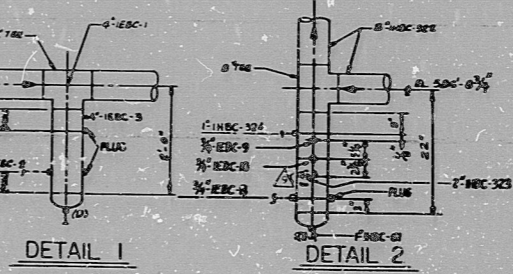
SIZE E

APPROX. L.F. 269



—	RESTRAINT	—	RESTRAINT
—	SPECIAL HANGER	—	ROD HANGER
—	DIRECTION OF RESTRAINT	—	DIRECTION OF EXPANSION
—	DISASSEMBLED	—	DISASSEMBLED

- NOTES:
1. ALL PIPING TO BE FABRICATED TO MEET THE REQUIREMENTS SPECIFIED IN THE SPECIFICATIONS AND THE CODES REFERRED TO THEREIN.
  2. FOR MATERIAL SPECIFICATIONS OF PIPE, TUBES, FITTINGS, AND PIPE FLANGES SEE THE QUANTITY LIST OF DWG. 7220 M-431.
  3. FOR PIPE AND FITTING DIMENSIONS SEE FIGS. M-432 AND M-433.
  4. FOR DIMENSIONS OF FITTING SEE FIG. M-434.
  5. FOR DIMENSION CONNECTION DETAILS SEE DWG. M-435.
  6. ALL ALLOWANCE SHALL BE MADE FOR WELDING TOLERANCES AND ALL FITS SHALL BE AS SHOWN IN THE DIMENSIONS SPECIFIED UNLESS OTHERWISE NOTED ON THE DRAWING.
  7. FOR PIPE STAYS, SUPPORTS, AND HANGERS SEE DWG. M-436, M-437, M-438, M-439, M-440, M-441, M-442, M-443, M-444, M-445, M-446, M-447, M-448, M-449, M-450, M-451, M-452, M-453, M-454, M-455, M-456, M-457, M-458, M-459, M-460, M-461, M-462, M-463, M-464, M-465, M-466, M-467, M-468, M-469, M-470, M-471, M-472, M-473, M-474, M-475, M-476, M-477, M-478, M-479, M-480, M-481, M-482, M-483, M-484, M-485, M-486, M-487, M-488, M-489, M-490, M-491, M-492, M-493, M-494, M-495, M-496, M-497, M-498, M-499, M-500, M-501, M-502, M-503, M-504, M-505, M-506, M-507, M-508, M-509, M-510, M-511, M-512, M-513, M-514, M-515, M-516, M-517, M-518, M-519, M-520, M-521, M-522, M-523, M-524, M-525, M-526, M-527, M-528, M-529, M-530, M-531, M-532, M-533, M-534, M-535, M-536, M-537, M-538, M-539, M-540, M-541, M-542, M-543, M-544, M-545, M-546, M-547, M-548, M-549, M-550, M-551, M-552, M-553, M-554, M-555, M-556, M-557, M-558, M-559, M-560, M-561, M-562, M-563, M-564, M-565, M-566, M-567, M-568, M-569, M-570, M-571, M-572, M-573, M-574, M-575, M-576, M-577, M-578, M-579, M-580, M-581, M-582, M-583, M-584, M-585, M-586, M-587, M-588, M-589, M-590, M-591, M-592, M-593, M-594, M-595, M-596, M-597, M-598, M-599, M-600, M-601, M-602, M-603, M-604, M-605, M-606, M-607, M-608, M-609, M-610, M-611, M-612, M-613, M-614, M-615, M-616, M-617, M-618, M-619, M-620, M-621, M-622, M-623, M-624, M-625, M-626, M-627, M-628, M-629, M-630, M-631, M-632, M-633, M-634, M-635, M-636, M-637, M-638, M-639, M-640, M-641, M-642, M-643, M-644, M-645, M-646, M-647, M-648, M-649, M-650, M-651, M-652, M-653, M-654, M-655, M-656, M-657, M-658, M-659, M-660, M-661, M-662, M-663, M-664, M-665, M-666, M-667, M-668, M-669, M-670, M-671, M-672, M-673, M-674, M-675, M-676, M-677, M-678, M-679, M-680, M-681, M-682, M-683, M-684, M-685, M-686, M-687, M-688, M-689, M-690, M-691, M-692, M-693, M-694, M-695, M-696, M-697, M-698, M-699, M-700, M-701, M-702, M-703, M-704, M-705, M-706, M-707, M-708, M-709, M-710, M-711, M-712, M-713, M-714, M-715, M-716, M-717, M-718, M-719, M-720, M-721, M-722, M-723, M-724, M-725, M-726, M-727, M-728, M-729, M-730, M-731, M-732, M-733, M-734, M-735, M-736, M-737, M-738, M-739, M-740, M-741, M-742, M-743, M-744, M-745, M-746, M-747, M-748, M-749, M-750, M-751, M-752, M-753, M-754, M-755, M-756, M-757, M-758, M-759, M-760, M-761, M-762, M-763, M-764, M-765, M-766, M-767, M-768, M-769, M-770, M-771, M-772, M-773, M-774, M-775, M-776, M-777, M-778, M-779, M-780, M-781, M-782, M-783, M-784, M-785, M-786, M-787, M-788, M-789, M-790, M-791, M-792, M-793, M-794, M-795, M-796, M-797, M-798, M-799, M-800, M-801, M-802, M-803, M-804, M-805, M-806, M-807, M-808, M-809, M-810, M-811, M-812, M-813, M-814, M-815, M-816, M-817, M-818, M-819, M-820, M-821, M-822, M-823, M-824, M-825, M-826, M-827, M-828, M-829, M-830, M-831, M-832, M-833, M-834, M-835, M-836, M-837, M-838, M-839, M-840, M-841, M-842, M-843, M-844, M-845, M-846, M-847, M-848, M-849, M-850, M-851, M-852, M-853, M-854, M-855, M-856, M-857, M-858, M-859, M-860, M-861, M-862, M-863, M-864, M-865, M-866, M-867, M-868, M-869, M-870, M-871, M-872, M-873, M-874, M-875, M-876, M-877, M-878, M-879, M-880, M-881, M-882, M-883, M-884, M-885, M-886, M-887, M-888, M-889, M-890, M-891, M-892, M-893, M-894, M-895, M-896, M-897, M-898, M-899, M-900, M-901, M-902, M-903, M-904, M-905, M-906, M-907, M-908, M-909, M-910, M-911, M-912, M-913, M-914, M-915, M-916, M-917, M-918, M-919, M-920, M-921, M-922, M-923, M-924, M-925, M-926, M-927, M-928, M-929, M-930, M-931, M-932, M-933, M-934, M-935, M-936, M-937, M-938, M-939, M-940, M-941, M-942, M-943, M-944, M-945, M-946, M-947, M-948, M-949, M-950, M-951, M-952, M-953, M-954, M-955, M-956, M-957, M-958, M-959, M-960, M-961, M-962, M-963, M-964, M-965, M-966, M-967, M-968, M-969, M-970, M-971, M-972, M-973, M-974, M-975, M-976, M-977, M-978, M-979, M-980, M-981, M-982, M-983, M-984, M-985, M-986, M-987, M-988, M-989, M-990, M-991, M-992, M-993, M-994, M-995, M-996, M-997, M-998, M-999, M-1000.
  8. HANGERS INDICATED ON THIS DRAWING ARE BECHTEL DESIGNED HANGERS. FOR ALL OTHER HANGERS THIS DRAWING SHALL BE REFERRED TO DWG. M-430.



PRC APERTURE CARD

POOR ORIGINAL

NO.	DESCRIPTION	DATE	BY	CHKD.
1	ISSUED FOR SUPPORT FAB			
2	ISSUED FOR SUPPORT FAB			
3	ISSUED FOR SUPPORT FAB			
4	ISSUED FOR SUPPORT FAB			
5	ISSUED FOR SUPPORT FAB			
6	ISSUED FOR SUPPORT FAB			
7	ISSUED FOR SUPPORT FAB			
8	ISSUED FOR SUPPORT FAB			
9	ISSUED FOR SUPPORT FAB			
10	ISSUED FOR SUPPORT FAB			
11	ISSUED FOR SUPPORT FAB			
12	ISSUED FOR SUPPORT FAB			
13	ISSUED FOR SUPPORT FAB			
14	ISSUED FOR SUPPORT FAB			
15	ISSUED FOR SUPPORT FAB			
16	ISSUED FOR SUPPORT FAB			
17	ISSUED FOR SUPPORT FAB			
18	ISSUED FOR SUPPORT FAB			
19	ISSUED FOR SUPPORT FAB			
20	ISSUED FOR SUPPORT FAB			
21	ISSUED FOR SUPPORT FAB			
22	ISSUED FOR SUPPORT FAB			
23	ISSUED FOR SUPPORT FAB			
24	ISSUED FOR SUPPORT FAB			
25	ISSUED FOR SUPPORT FAB			
26	ISSUED FOR SUPPORT FAB			
27	ISSUED FOR SUPPORT FAB			
28	ISSUED FOR SUPPORT FAB			
29	ISSUED FOR SUPPORT FAB			
30	ISSUED FOR SUPPORT FAB			
31	ISSUED FOR SUPPORT FAB			
32	ISSUED FOR SUPPORT FAB			
33	ISSUED FOR SUPPORT FAB			
34	ISSUED FOR SUPPORT FAB			
35	ISSUED FOR SUPPORT FAB			
36	ISSUED FOR SUPPORT FAB			
37	ISSUED FOR SUPPORT FAB			
38	ISSUED FOR SUPPORT FAB			
39	ISSUED FOR SUPPORT FAB			
40	ISSUED FOR SUPPORT FAB			
41	ISSUED FOR SUPPORT FAB			
42	ISSUED FOR SUPPORT FAB			
43	ISSUED FOR SUPPORT FAB			
44	ISSUED FOR SUPPORT FAB			
45	ISSUED FOR SUPPORT FAB			
46	ISSUED FOR SUPPORT FAB			
47	ISSUED FOR SUPPORT FAB			
48	ISSUED FOR SUPPORT FAB			
49	ISSUED FOR SUPPORT FAB			
50	ISSUED FOR SUPPORT FAB			
51	ISSUED FOR SUPPORT FAB			
52	ISSUED FOR SUPPORT FAB			
53	ISSUED FOR SUPPORT FAB			
54	ISSUED FOR SUPPORT FAB			
55	ISSUED FOR SUPPORT FAB			
56	ISSUED FOR SUPPORT FAB			
57	ISSUED FOR SUPPORT FAB			
58	ISSUED FOR SUPPORT FAB			
59	ISSUED FOR SUPPORT FAB			
60	ISSUED FOR SUPPORT FAB			
61	ISSUED FOR SUPPORT FAB			
62	ISSUED FOR SUPPORT FAB			
63	ISSUED FOR SUPPORT FAB			
64	ISSUED FOR SUPPORT FAB			
65	ISSUED FOR SUPPORT FAB			
66	ISSUED FOR SUPPORT FAB			
67	ISSUED FOR SUPPORT FAB			
68	ISSUED FOR SUPPORT FAB			
69	ISSUED FOR SUPPORT FAB			
70	ISSUED FOR SUPPORT FAB			
71	ISSUED FOR SUPPORT FAB			
72	ISSUED FOR SUPPORT FAB			
73	ISSUED FOR SUPPORT FAB			
74	ISSUED FOR SUPPORT FAB			
75	ISSUED FOR SUPPORT FAB			
76	ISSUED FOR SUPPORT FAB			
77	ISSUED FOR SUPPORT FAB			
78	ISSUED FOR SUPPORT FAB			
79	ISSUED FOR SUPPORT FAB			
80	ISSUED FOR SUPPORT FAB			
81	ISSUED FOR SUPPORT FAB			
82	ISSUED FOR SUPPORT FAB			
83	ISSUED FOR SUPPORT FAB			
84	ISSUED FOR SUPPORT FAB			
85	ISSUED FOR SUPPORT FAB			
86	ISSUED FOR SUPPORT FAB			
87	ISSUED FOR SUPPORT FAB			
88	ISSUED FOR SUPPORT FAB			
89	ISSUED FOR SUPPORT FAB			
90	ISSUED FOR SUPPORT FAB			
91	ISSUED FOR SUPPORT FAB			
92	ISSUED FOR SUPPORT FAB			
93	ISSUED FOR SUPPORT FAB			
94	ISSUED FOR SUPPORT FAB			
95	ISSUED FOR SUPPORT FAB			
96	ISSUED FOR SUPPORT FAB			
97	ISSUED FOR SUPPORT FAB			
98	ISSUED FOR SUPPORT FAB			
99	ISSUED FOR SUPPORT FAB			
100	ISSUED FOR SUPPORT FAB			

<b>BECHTEL</b>	
AND ASSOCIATES	
SANDLAND PLANT UNITS 1 & 2	
CONSUMERS POWER COMPANY	
HANGER ISOMETRIC	
AUXILIARY STEAM & TURBINE EXHAUST	
UNIT 1	
JOB NO.	DRAWING NO.
7220	H-633 SH-2 (Q)
REV.	9

11  
11  
8.5  
8.5  
11  
8.5  
11  
17

11  
11  
8.5  
8.5  
11  
8.5  
11  
17

RID

8302160048

