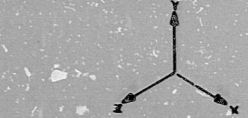


H-619 SH.12(Q)



APPROX. L.F. 303



- NOTES:**
1. ALL PIPING TO BE FABRICATED AND ERRECTED IN ACCORDANCE WITH SPECIFICATIONS 7200-0-200.
 2. FOR MATERIAL SPECIFICATIONS OF PIPE, VALVES AND FITTINGS, SEE SPECIFIC CALLS DIRECTED TO SHEET 303-02.
 3. FOR PIPING AND EQUIPMENT MATERIALS SEE SHEET 303-03.
 4. FOR EQUIPMENT LIST SEE 303-04.
 5. FOR INSTRUMENT CONNECTIONS SEE SHEET 303-05.
 6. DO ALLOWANCE FOR PIPE HANGERS TO BE INSTALLED ON GRATING AND ALL FITTING IS TO BE COMPLETED IN THE CORNER POINTS UNLESS OTHERWISE NOTED ON THE DRAWING.
 7. FOR PIPING SYSTEMS CONSTRUCTION SEE SHEET 303-06, 303-07, 303-08, 303-09.
 8. FOR DIMENSIONS SEE SHEET 303-10.
 9. ALL CURVE RADIUS UNLESS OTHERWISE NOTED TO BE 10'-00" UNLESS OTHERWISE NOTED.
 10. FOR FITTING AND EQUIPMENT SYMBOLS SEE SHEET 303-01.
 11. OTHER HANGERS SHOULD BE SPECIFICALLY IDENTIFIED AND DIMENSIONS NOTED.
 12. FOR VENTS AND DRAINS SEE SHEET 303-11. VENTS AND DRAINS ARE DIMENSIONS (BY SHEET).
 13. ALL HANGERS TO BE INSTALLED ON THE SIDE OF THE REACTOR WALL AND NOT ON THE REACTOR WALL.
 14. INDICATE HANGERS TO BE INSTALLED ON REACTOR WALL PENETRATIONS.
 15. INDICATE HANGERS TO BE INSTALLED ON REACTOR WALL PENETRATIONS.
 16. INDICATE HANGERS TO BE INSTALLED ON REACTOR WALL PENETRATIONS.
 - 17.

REFERENCE DWGS.

- M-300 TYPES OF FILLED HEAD FITTINGS FOR CRITICAL FLUIDS PENETRATIONS
- M-301 REACTOR BLDG. MECHANICAL PENETRATION SCHEDULE UNIT-1

P.R.C.
APERTURE
CARD

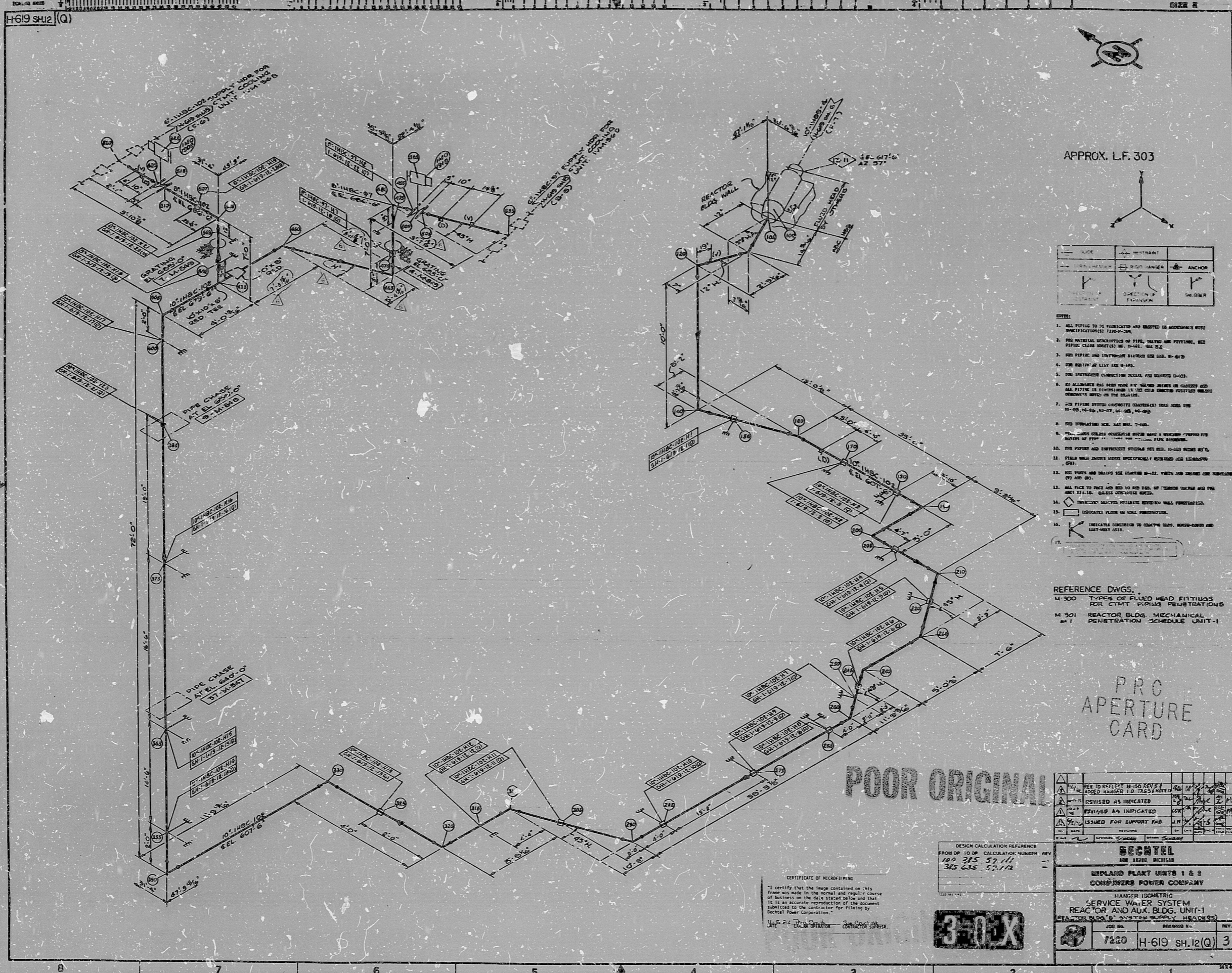
POOR ORIGINAL

DESIGN CALCULATION REFERENCE
FROM DP 10 DP CALCULATION NUMBER REV
100 345 57/11
365 665 57/12

CERTIFICATE OF MICROFILMING
"I certify that the image contained on this frame was made in the normal and regular course of business on the date stated below and that it is an accurate reproduction of the document submitted to the contractor for filing by Bechtel Power Corporation."
U.S. 24-27a Dept. of Energy
MICROFILM OPERATOR CONTRACTOR'S SIGNATURE

3-0-X

BECHTEL	
1000 AVENUE OF THE STARS	
BERKELEY, CALIFORNIA 94705	
INDIANAPOLIS PLANT UNITS 1 & 2	
CONDENSERS POWER COMPANY	
HANGER ISOMETRIC	
SERVICE WATER SYSTEM	
REACTOR AND AUX. BLDG. UNIT-1	
REACTOR BLDG. SYSTEM PENETRATION SCHEDULE	
NO.	REV.
7220	H-619 SH.12(Q) 3



11

11

8.5

8.5

11

17

11

11

8.5

8.5

11

17

RIDS

8302160030

