

H-619 SHT. 9 (Q)

SHEET 9

3-D-X

CERTIFICATION OF MICROFILMING  
I certify that the images contained on this  
film are true and accurate reproductions of the  
originals in the normal and regular course  
of business, on the date stated below and it is  
submitted to the contractor for filing, by  
the contractor for filing, by  
DATE: 10/21/68 BY: C. J. BASTO, C. J. BASTO, SUPERVISOR

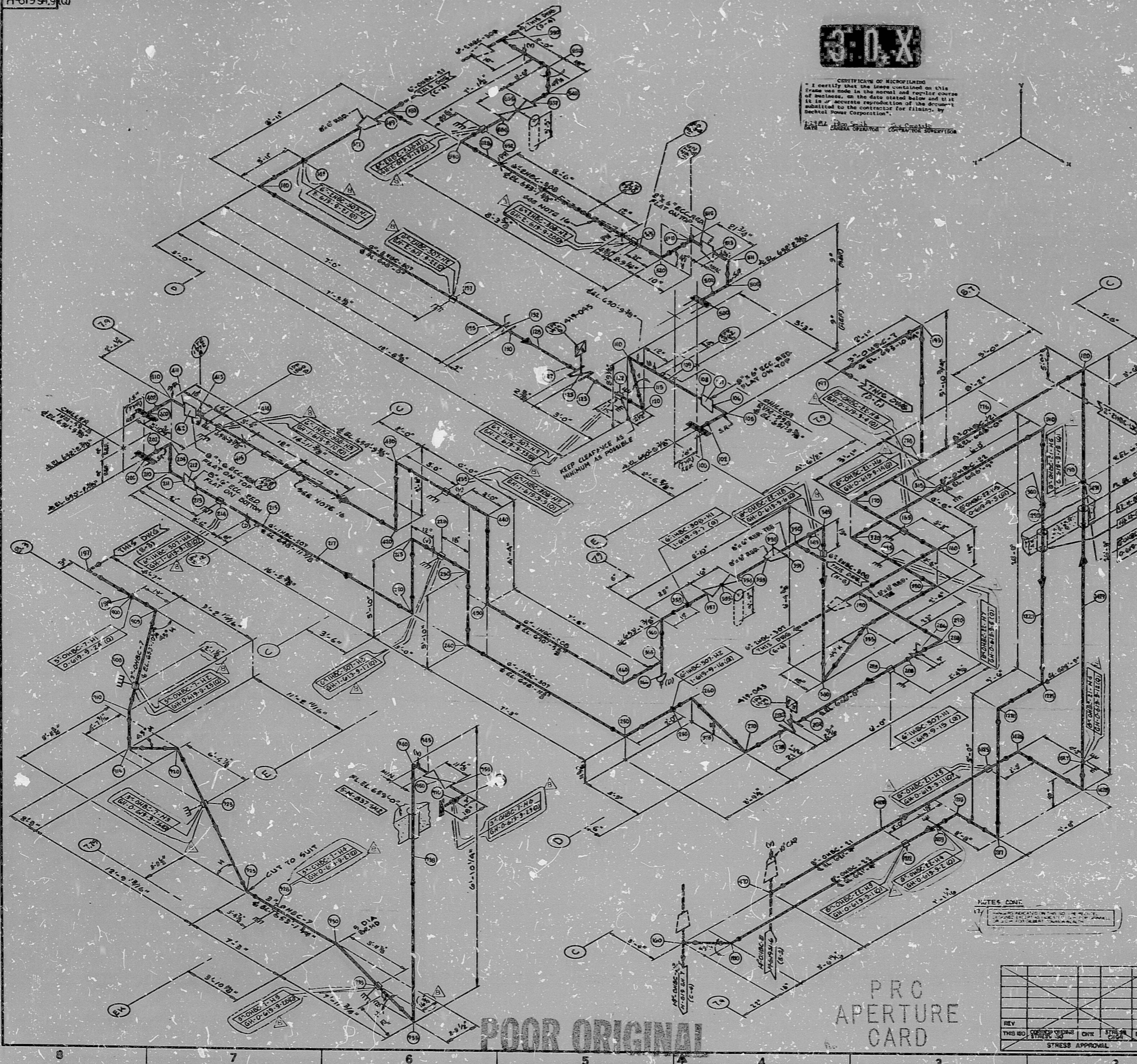
APPROX. L.F. 382

STRESS APPROVAL DATA	
NO.	DATE

STRESS APPROVAL DATA	
NO.	DATE


- NOTES:
1. ALL STRESS TO BE MAINTAINED AND CHECKED IN ACCORDANCE WITH SPECIFICATIONS 7220-9-3000.
  2. THE MINIMUM REQUIREMENTS OF PIPE, VALVES AND FITTINGS, SEE PIPING CLASS SPECIFICATIONS 9-3000.
  3. FOR PIPE AND FITTINGS SPECIFICATIONS SEE SEC. 9-3000 B & M-414A.
  4. FOR REQUIREMENT LIST SEE 9-3000.
  5. FOR INSTRUMENT CONNECTIONS SEE SPEC. 9-3000.
  6. ALL MATERIALS TO BE USED MUST BE RELEASED BY THE CONTRACTOR AND ALL STRESS TO BE MAINTAINED IN THE FIELD UNDER PROTECTED CONDITIONS.
  7. FOR STRESS APPROVAL PROCEDURES SEE SEC. 9-3000 B & M-414A.
  8. FOR MATERIALS AND SPEC. 9-3000.
  9. PIPE SHALL BE RELEASED TO THE CONTRACTOR WITH A RELEASE CERTIFICATE WHICH IS TO BE KEPT IN THE FIELD UNDER PROTECTED CONDITIONS.
  10. FOR PIPE AND FITTINGS SPECIFICATIONS SEE SEC. 9-3000 B & M-414A.
  11. FIELD RELEASE SHALL BE MAINTAINED UNDER PROTECTED CONDITIONS.
  12. FOR PIPE AND FITTINGS SPECIFICATIONS SEE SEC. 9-3000 B & M-414A.
  13. ALL STRESS TO BE MAINTAINED AND CHECKED IN ACCORDANCE WITH SPECIFICATIONS 7220-9-3000.
  14. INDICATES STRESS RELEASE AFTER AS BUILT INSPECTION.
  15. INDICATES FORM OF RELEASE.
  16. THIS SYMBOL TO BE SUPPLIED AND BE LONGER THAN THE FRAME, SPECIAL DIMENSIONS AND SHIPPED TO THE VENTURE MANUFACTURER, FOR INSTALLATION AND TESTING.


NOTES CONT:



PRO APERTURE CARD

POOR ORIGINAL

**RECTEL**  
AND ASSOC. ENGINEERS

INCLAND PLANT UNITS 1 & 2  
CONSUMERS POWER COMPANY

HAMMER ISOMETRIC  
SERVICE WATER TO CHILLERS  
SYSTEM B UNIT 112

REV	NO.	DATE	BY	CHKD	DATE

7220 H-619 SHT. 9 (Q) 8

17"

11"

8.5"

8.5"

11"

17"

17"

11"

8.5"

8.5"

11"

17"

RIDS

8302160026

