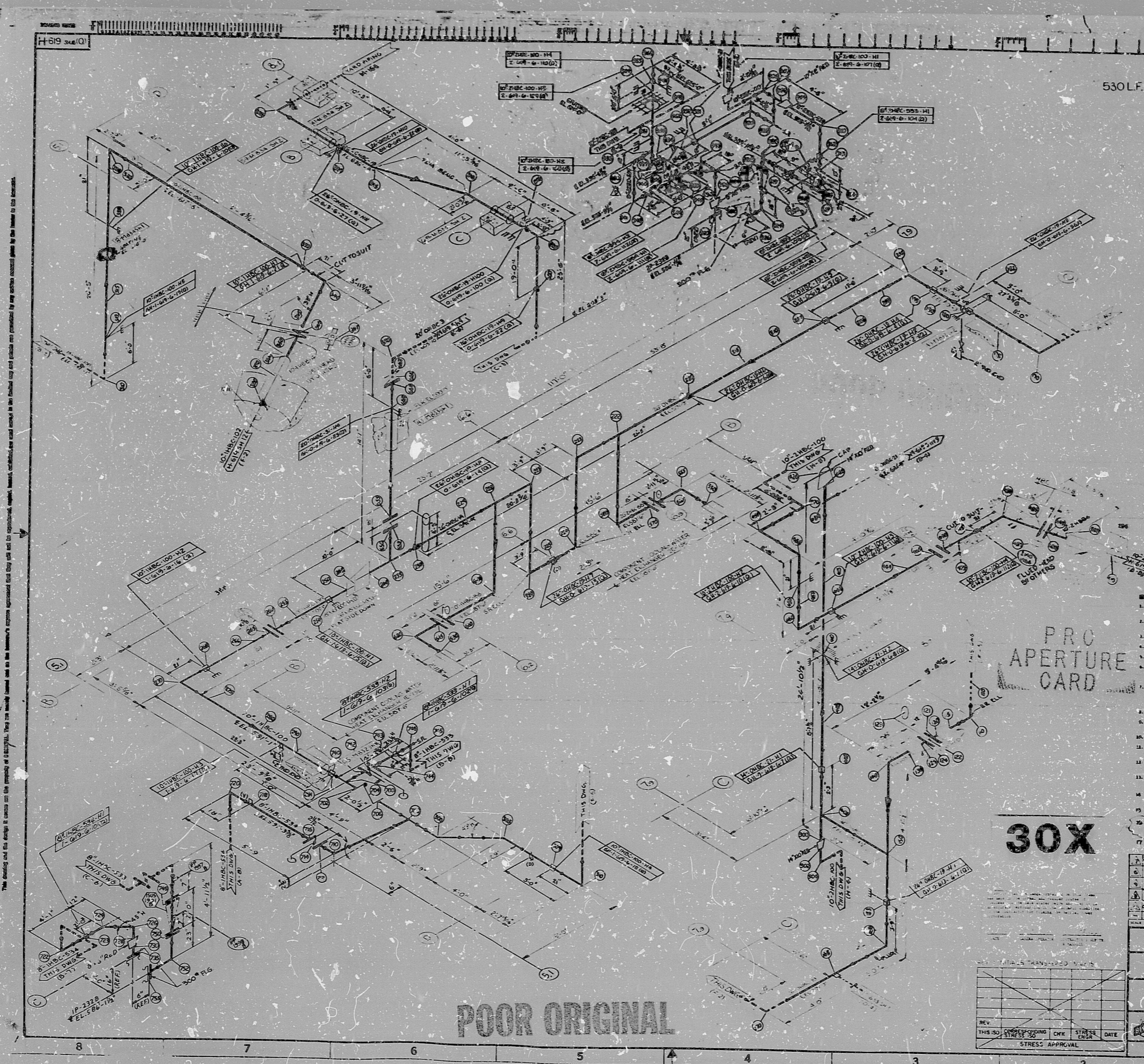


17"
11"
8.5"
8.5"
11"
17"



SYSTEM ANALYSIS DATA

CLASSIFICATION	
AREA NO.	
DATE	
DESIGNED BY	
CHECKED BY	
APPROVED BY	
SCALE	
OTHER DATA	

OFFICE ANALYSIS DATA

CLASSIFICATION	
AREA NO.	
DATE	
DESIGNED BY	
CHECKED BY	
APPROVED BY	
SCALE	
OTHER DATA	

CLIQUE	RESTRAINT
SPRING HANGER	ROCK HANGER
DIRECTION OF RESTRAINT	DIRECTION OF EXPANSION
	ANCHOR

DESIGN CALCULATION REFERENCE

NO.	DESCRIPTION
100	ASME B31.1-1960
110	ASME B31.3-1963
120	ASME B31.4-1963
130	ASME B31.5-1963
140	ASME B31.6-1963
150	ASME B31.7-1963

- NOTES:
- ALL PIPING TO BE FABRICATED AND INSTALLED IN ACCORDANCE WITH THE SPECIFICATIONS OF THE AMERICAN SOCIETY OF MECHANICAL ENGINEERS (ASME) AND THE NATIONAL BUREAU OF STANDARDS (ANSI).
 - FOR MATERIAL SPECIFICATIONS OF PIPE, FLANGES AND FITTINGS, SEE PARTS LIST ATTACHED TO THIS DRAWING.
 - FOR WELDING AND WELDING PROCEDURES, SEE SPEC. H-400.
 - FOR SUPPORTS, SEE SPEC. H-400.
 - FOR HANGERS, SEE SPEC. H-400.
 - FOR ANCHORS, SEE SPEC. H-400.
 - FOR ALL OTHERS, SEE THE CALCULATION REFERENCE LIST ATTACHED TO THIS DRAWING.
 - FOR PIPE SUPPORTS, SEE SPEC. H-400.
 - FOR HANGER SUPPORTS, SEE SPEC. H-400.
 - FOR ANCHOR SUPPORTS, SEE SPEC. H-400.
 - FOR ALL OTHERS, SEE THE CALCULATION REFERENCE LIST ATTACHED TO THIS DRAWING.
 - FOR PIPE SUPPORTS, SEE SPEC. H-400.
 - FOR HANGER SUPPORTS, SEE SPEC. H-400.
 - FOR ANCHOR SUPPORTS, SEE SPEC. H-400.
 - FOR ALL OTHERS, SEE THE CALCULATION REFERENCE LIST ATTACHED TO THIS DRAWING.
 - FOR PIPE SUPPORTS, SEE SPEC. H-400.
 - FOR HANGER SUPPORTS, SEE SPEC. H-400.
 - FOR ANCHOR SUPPORTS, SEE SPEC. H-400.
 - FOR ALL OTHERS, SEE THE CALCULATION REFERENCE LIST ATTACHED TO THIS DRAWING.

PRO APERTURE CARD

30X

REV.	DATE	BY	CHK.	STRESS	DATE
1					
2					
3					
4					
5					
6					
7					
8					
9					
10					
11					
12					
13					
14					
15					
16					
17					
18					
19					
20					
21					
22					
23					
24					
25					
26					
27					
28					
29					
30					

RECTEL
400 1502 MICHIGAN

MIDLAND PLANT UNITS 1 & 2
CONSUMERS POWER COMPANY

HANGER ISOMETRIC WATER SUPPLY SYSTEM UNITS 1 & 2

JOB NO. 7220 H-519 SH6(Q) 9

DATE 11-1-63

RIDS

8302150299

